

## TECHNI-SPRING - FIBERGLASS BASE:



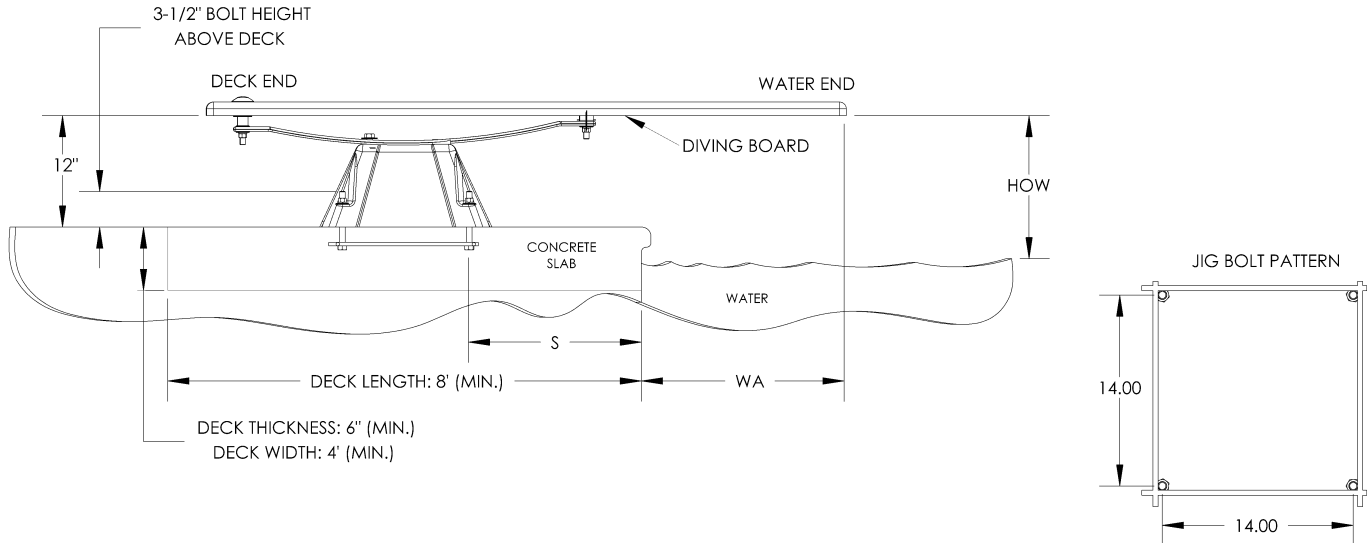
Part # TSBF (Techni-Spring Fiberglass Base)

Part # TSS6 (6' Spring Assembly) **OR** Part # TSS8 (8' Spring Assembly)

**NOTE: MUST ORDER 3 PARTS FOR A COMPLETE TECHNI-SPRING BASE AND BOARD COMBINATION.**

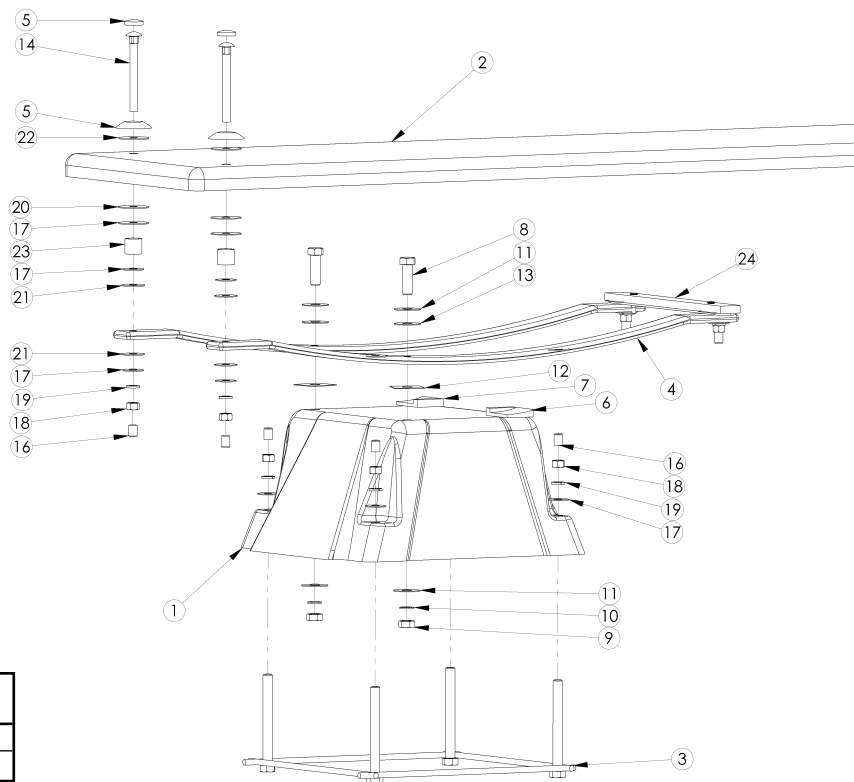
### FEATURES:

- Active Base - Spring Feature is Derived from Base
- Durable & Long Lasting Acrylic & Fiberglass Construction with Powder-Coated Leaf Spring
- Available for Use With 6 &, 8" Length Boards
- 2 Hole Drill Pattern 12" on center
- Refer to Board Chart on Pg. 7
- Refer to Available Base Colors on Pg. 7



<p><b>IMPORTANT:</b></p> <p>THESE DIMENSIONS ARE ACCURATE ONLY FOR VERTICAL POOL WALLS, <b>TYPICALLY GUNITE CONSTRUCTION</b>, WITH LESS THAN A 3' RADIUS TO THE POOL FLOOR.</p> <p>DUE TO THE VARYING SIZES OF OTHER POOLS, <b>TYPICALLY VINYL LINER CONSTRUCTION</b>, PLEASE CONTACT CUSTOMER SERVICE FOR PROPER JIG PLACEMENT.</p> <p><b>1-800-737-5386</b></p>	TECHNI-SPRING PART # (FIBERGLASS)	NOMINAL BOARD LENGTH	ANSI/NSPI-5 POOL TYPE	DISTANCE FROM WATER'S EDGE TO FORWARD JIG BOLT (S)	DISTANCE FROM END OF BOARD TO FORWARD JIG BOLT	MIN. OVERHANG PLUS OR MINUS 3" (WA)	MAX HEIGHT OF BOARD ABOVE WATER (HOW)
	TSBF/TSS6	6'	I	28.25"	46.25"	18"	20"
	TSBF/TSS6	6'	II	28.25"	46.25"	18"	20"
	TSBF/TSS6	6'	III	22.25"	46.25"	24"	26"
	TSBF/TSS6	6'	IV	16.25"	46.25"	30"	30"
	TSBF/TSS6	6'	V	10.25"	46.25"	36"	40"
	TSBF/TSS8	8'	I	Cannot put 8' jump board on type I pool			
	TSBF/TSS8	8'	II	Cannot put 8' jump board on type II pool			
	TSBF/TSS8	8'	III	41"	65"	24"	26"
	TSBF/TSS8	8'	IV	35"	65"	30"	30"
TSBF/TSS8	8'	V	29"	65"	36"	40"	

## TECHNI-SPRING - FIBERGLASS BASE (TSBF & TSS6):



**DRAWING REPRESENTS THE FOLLOWING PART NUMBERS:**  
 TSBF & TSS6 (shown)  
 TSBF & TSS8

ITEM #	COMPONENT	DESCRIPTION	KITS - QTY. COUNTS				
			N/A	TB-M	TSF-M	TS-M	TSS6
1	TSBF	Techni-Spring Fiberglass Base	1				
2	TB6WW	6' Techni-Beam White w/White Top Tread & Hdw Kit	1				
3	TSF-J	Techni-Spring Fiberglass Base Mounting Jig	1				
4	TSS6	Techni-Spring Assembly & Mounting Hardware					1
5	H-WHT WAS/CAP	I.F. White Washer Cap		2			
6	H-RIGHT PLUG	Right Base Nylon Plug	1				
7	H-LEFT PLUG	Left Base Nylon Plug	1				
8	H-SS 5/8-11x3	5/8-11x3" Hex Head Bolt S.S.			2		
9	H-SS 5/8 H NUT	5/8-11 Hex Finish Nut S.S.			2	2	
10	H-SS 5/8 LOC WA	5/8 Split Lock Washer S.S.			2	2	
11	H-SS 5/8 F WASH	5/8" USS Flat Washer S.S. (cut)			2	4	
12	H-5/8 SQ WASH	5/8 x 2" Square Nylon Washer				2	
13	H-5/8 RD WASH	5/8 x 1-3/4" Round Nylon Washer				4	
14	H-SS 5 C BOLT	1/2-13 x5 Carriage Bolt S.S.		2			
15	H-SS 5/8 HEX HD	5/8-11 x 2 Hex C/S S.S.				2*	
16	H-1-1/2 WHT CAP	.750 x 1-1/2 White UV Nut Cap		2	4		
17	H-SS 1/2 F WAS	1/2 USS Flat Washer S.S.		2	4	4	
18	H-SS 1/2 H NUT	1/2"- 13 Hex Finish Nut S.S.		2	4		
19	H-SS 1/2 LOC WA	1/2 Lock Washer S.S.		2	4		
20	H-1/2 RED WASH	1/2 x 2" Red Rubber Washer		2			
21	H-1/2 NYLON WAS	1/2" Flat Washer Nylon			4	4	
22	H-1/2 BLK WASH	1/2 x 2" Black Rubber Washer		2			
23	H-SS 1 SPACER	1" Spacer S.S.				2	
24	TS-FC	Techni-Spring Rubber Fulcrum Pad	1				

\*Not required for fiberglass base installation.

### NOTES:

TB6WW diving board shown in exploded view for illustration purposes. Must be purchased separately. Other diving board options available.