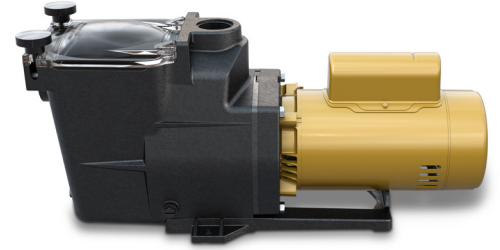


PROVEN PERFORMANCE FOR POOLS OF ALL SIZES AND TYPES.

Hayward Super Pump high efficiency pumps set the industry standard for excellence and value while also meeting DOE efficiency regulations. Their heavy-duty, high-performance motor and airflow ventilation provide quieter, cooler, more efficient operation for virtually any pool or spa, while their exclusive service-ease design offers quick 4-bolt access to all internal components. With these and other advanced features, it's easy to see why Super Pump is the industry's most trusted workhorse.

KEY FEATURES

- » **Superior pump efficiency** meets Department of Energy (DOE) regulations
- » **Exclusive swing-away hand knobs** make for easy strainer cover removal without tools
- » **See-through strainer cover** lets you see when the basket needs cleaning
- » **Extra-large debris basket** provides added leaf-holding capacity for less frequent maintenance



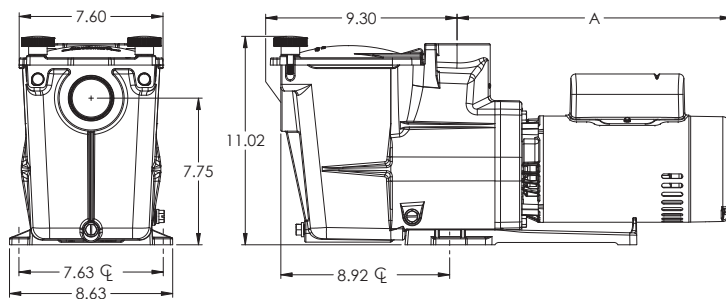
SPECIFICATIONS




MODEL NUMBER	TOTAL HP	PORT SIZE	PUMP SPEED	VOLTAGE	DIMENSION "A"	WEIGHTED ENERGY FACTOR (WEF)*
SP2600X5	0.60	2 in.	Single-Speed	230V/115V	14¼ in	4.3
SP2605X7	0.85	2 in.	Single-Speed	230V/115V	14¼ in	3.9
SP2607X10	1.10	2 in.	Single-Speed	230V/115V	14½ in	3.4
SP2607X102S	1.00	2 in.	Two-Speed	230V	13⅜ in	4.5

*The higher the weighted energy factor (WEF), the more efficient the pump. Visit hayward.com/regulations for more information.



SUPER PUMP SERIES DIMENSIONS (INCHES)



Super Pump series pumps are listed by:   

SUPER PUMP FLOW VS. TOTAL HEAD

