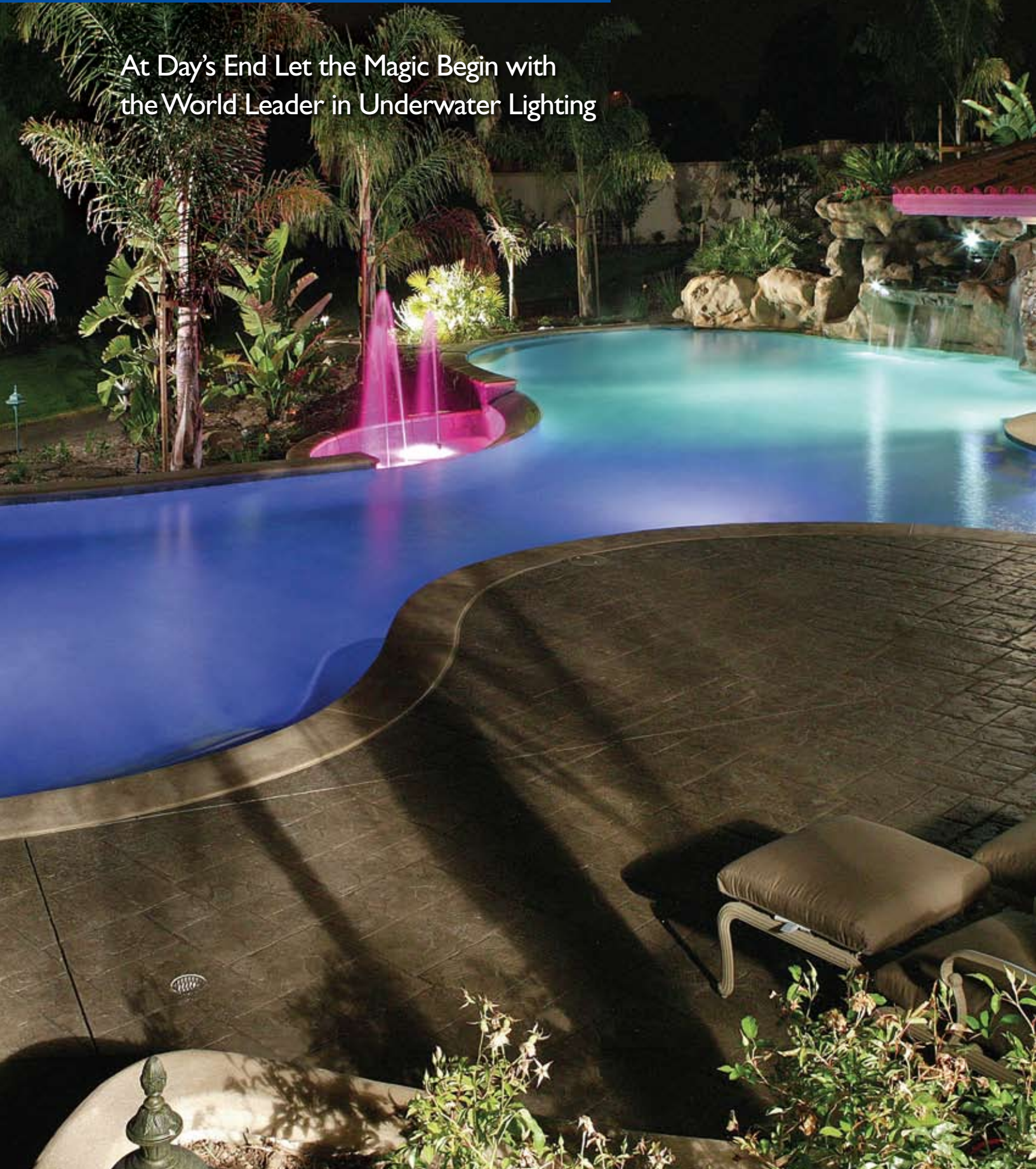


Innovations in Pool and Spa Lighting

By Pentair Water Pool and Spa®

At Day's End Let the Magic Begin with
the World Leader in Underwater Lighting



Introducing the Most Energy-Efficient Lighting Available

IntelliBrite®* automated color-changing pool and spa lights feature LED technology—the wave of the future in energy efficiency, lifetime value, quality of light, and the ability to control it.

With IntelliBrite, combinations of individual colored LEDs are mixed and matched to achieve a vibrant spectrum of colors. These combinations are power sequenced to illuminate and cycle through colors at varying speeds, and in different sequences of color. Combined with a custom reflector and unique lens design, the IntelliBrite is the brightest and most efficient underwater LED light available.



- Enjoy the even distribution of the brightest LED light on the market made possible by a custom reflector and superior lens geometry designed to eliminate glare and “hot spots” on the pool bottom.
- A superior reflector design assures more light is directed toward the pool bottom to further increase intensity and color effects, while minimizing glare.
- IntelliBrite is controlled digitally to enable a greater number of standard light programs and a greater ability to create your personal, magical light shows.
- Only IntelliBrite was designed to work with **IntelliTouch**®, the leading control system for pool, spa and poolscape equipment automation. In effect, you transfer programming and control of IntelliBrite to the central system that controls all your other backyard and pool features.
- UL listed when installed in Pentair niches.

*Patent Pending



Products aligned with the Eco Select™ brand are the most environmentally responsible choices within the Pentair Water Pool and Spa product family.

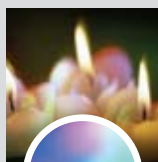
IntelliBrite Standard Light Shows



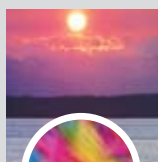
SAM Mode:
Cycles through the color spectrum of the SAM light



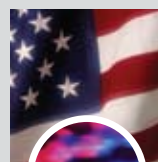
Party Mode:
Rapid color-changing builds energy and excitement



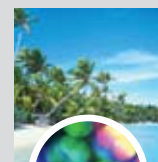
Romance Mode:
Slow transition for a mesmerizing and calming routine



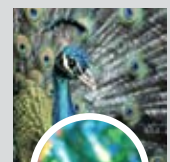
California Sunset Mode:
Dramatic transitions of orange, red and magenta tones



American Mode:
Patriotic red, white and blue transition



Caribbean Mode:
Transitions between a variety of blues and greens



Royal Mode:
Cycle that selects only lighter, brighter tones of color

Fixed Color Choices





The First and Brightest Automatic Color-Changing Lights

SAm® **Spectrum Amerlite**® pool lights and **SAL**® **Spectrum AquaLight**® spa lights produce brilliant underwater color lighting effects that transform your pool or spa into a luminous nighttime wonder. You can revel in a constantly changing underwater light show. Or, pause and bathe your pool or spa in a single captivating color. Plus, by installing Pentair's IntelliTouch® automation system you can orchestrate a symphony of "swimming color" across your pool, spa and landscape by synchronizing the pattern of color changes when multiple lighting systems are installed.

Standard features of SAm and SAL include:

- Ability to tailor the coverage of your lighting with a quarter turn of the lens to switch the standard beam to a wide angle pattern for maximum light coverage (15 degrees broader coverage than competing lights).
- Twin 75-watt halogen bulbs in SAm and 35-watt bulb in SAL provide illumination equivalent to 300 watts or 75 watts of incandescent light for brilliant color effects.
- Pentair color-changing technology creates a smooth and subtle transition between colors.
- Longer bulb life for greater value.
- Standard 3-wire connection.
- UL listed when installed in Pentair niches.
- One-year limited warranty. See warranty for details.



Underwater Pool and Spa Lights

Amerlite® incandescent lights have been the world standard of reliability for underwater pool and spa lighting for decades. In fact, tonight they will light more than 3 million pools around the world. See bottom right table for available models.

Standard features include:

- 8 $\frac{1}{8}$ " prismatic tempered glass lenses for optimum light diffusion.
- Optional snap-on lens covers in blue, red, green and amber to instantly create different moods for different occasions.
- Heat-sensing water cutoff for low water protection.
- Stainless steel shell and face ring are durable and highly corrosion resistant.
- Optional plastic snap-on face rings let you coordinate with your pool finish.
- Easy to service, all Pentair lights allow bulb changes without lowering your water level.
- UL listed when installed in Pentair niches.
- One-year limited warranty. See warranty for details.



Amerlite



AquaLight

SpaBrite

AquaLight® and **SpaBrite**® lights are compact units designed to provide big lighting performance for smaller pools and spas. Whether you choose the halogen quartz AquaLight or the incandescent SpaBrite, your pool or spa will shine brilliantly when the sun goes down. See bottom right table for available models.

Standard features include:

- Prismatic tempered glass lens for optimum light diffusion.
- Heat-sensing cut-off for low water protection.
- Easy service stainless steel clamp for quick and easy bulb replacement.
- Corrosion-resistant stainless steel housing and face ring are strong and durable.
- Plastic snap-on face rings available to coordinate with your pool finish.
- Optional blue, magenta, green, purple and blue-green mood-setting snap-on lenses.
- UL listed when installed in Pentair niches.
- One-year limited warranty. See warranty for details.



White LED Lights

Enjoy brighter, whiter light the most efficient way. **IntelliBrite®** white LEDs deliver:

- Pure, white light using 75% less wattage than incandescent lights.
- Superior light intensity and distribution—no hot spots or glare.
- Long lasting durability.
- The most efficient lighting technology available—an Eco Select™ choice.*



AquaLumin® III nicheless light is the third generation of the industry's first and only nicheless light for swimming pools offering luminous, double contact halogen quartz lighting. With its revolutionary patented design, AquaLumin III mounts directly on the pool wall for simple installation in vinyl pools. And it is the perfect choice for adding nighttime brilliance to new or existing pools.

Light Selection Guide

	White LED	Incandescent Light		Halogen Light	
	IntelliBrite	Amerlite	SpaBrite	AquaLight	AquaLumin III
Size of Light	Large	Large	Small	Small	Small
120V Wattage	70W (equivalent to 500W)	300W 400W 500W	100W	100W 250W	250W
12V Wattage	70W (equivalent to 500W)	100W 300W	100W	75W	100W

Showcase your landscape and pool perimeter



Color-changing LED Landscape Lights

Simply the most dramatic and energy-efficient lighting option available today, **IntelliBrite™** color-changing landscape lights can match your underwater pool and spa lighting, your mood, or any special event.

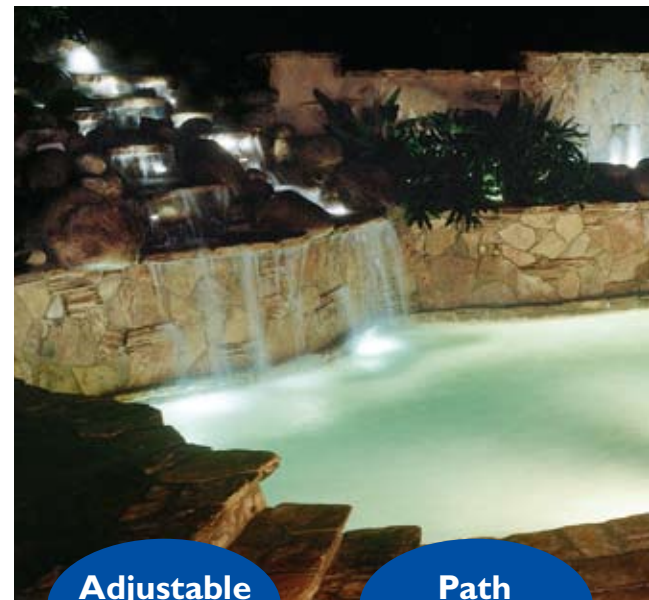
Standard features include:

- Versatile, adjustable, compact, medium floodlight design in matte black finish.
- Choose from two levels of brightness.
- Easily connects to standard 12-volt transformer.
- The most efficient lighting technology available—LED consume 92% less energy than even 12 volt systems. An Eco Select™ choice.
- Same color shows and fixed colors as IntelliBrite color-changing pool and spa lights. Can be synchronized for coordinated or complementary lighting effects!



White LED Landscape Lights

White landscape lights provide brilliant white lighting. A wide range of fixtures is available including path, directional, well and step lights.



Adjustable Well Lights



Path Lights



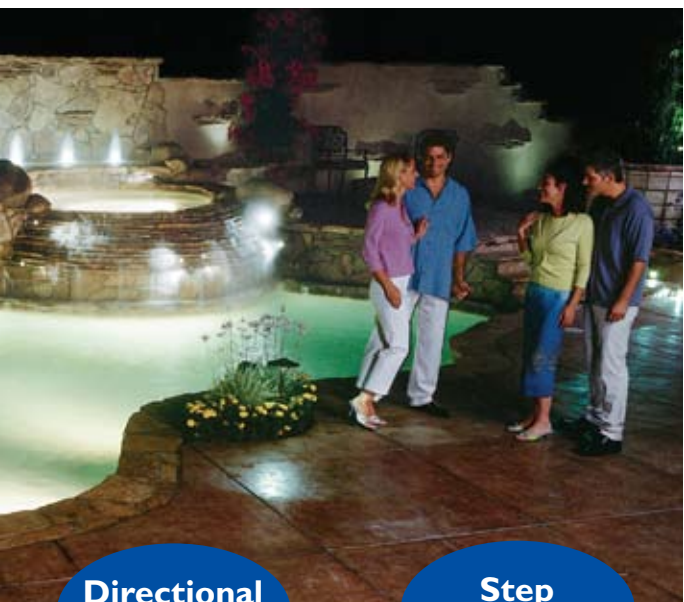


FIBERworks® Fiber Optic Perimeter Lighting Systems

For dramatic lighting effects that literally immerse your pool and spa in a wondrous glow, choose **FIBERworks®** fiber optic systems. FIBERworks creates a soft, neon light around your pool and spa perimeter for an elegant effect. For added drama and visual excitement, illuminate water features to capture the magic of moving water in one of seven colors. Flip a switch to select a color that sets the evening's mood.

Standard features include:

- Brighter light and longer life with OptiFusion™ lens technology for the most brilliant light transmission.
- More color—systems come with seven colors. Choose a single color or mix and match.
- Patented perimeter cable/track installs beneath the coping so it is hidden from view.
- Patented watertight lens assemblies for reliable, long-life performance.
- Optional wireless remote control available for added convenience.
- Compatible with Pentair control systems to automate and animate your lighting system, including Swimming Colors™ that literally make color swim from spa to pool to water feature... or whatever your imagination creates.
- UL listed.



Directional
Lights

Step
Lights





The Perfect Light for Wading Pools and Shallow Areas

The **HiLite**® plastic light is a high-intensity, low voltage halogen quartz that disperses a soft, pleasing illumination. HiLite is ideal for wading pools, shallow pool areas, beach entries, and steps. Red and blue **Qwik-Change**™ lenses make it easy to change colors to suit your style or mood.

Standard features include:

- The first UL listed light for installation in as little as 4 inches depth below the water's surface.
- Heat-sensing cut-off feature prevents over heating when water level is low.
- Soft and even light distribution.
- Simple two-wire connection for fast installation.
- Twists open for easy bulb replacement.
- Face ring available in white, gray or black.
- Corrosion-proof all plastic housing and lens for long life.
- One-year limited warranty. See warranty for details.



Bring Fountains to Life With Dazzling Color

When combined with **SAM**®* **Spectrum Amerlite**® or **SAL**® **Spectrum AquaLight**® automated color lights, Pentair Fountain Fixtures will bathe fountains in a constantly changing spectrum of color.

Standard features include:

- Sturdy cast bronze construction with attractive natural bronze finish.
- Base and yoke-mount rotate 360° and pivot 180° to point light in any direction.
- Strain-relief prevents damage to wiring connections.
- Integrated bonding lug for electrical safety.
- Rock guard is available for any Pentair light and niche.
- UL listed when used with Pentair Pool Products® lights.
- One-year limited warranty. See warranty for details.

*Must use SAM light for water fountains (Part No. 600061 or 600062). Lights sold separately.

Make magic at night with the world's most popular lighting choices for more than 40 years.

Ask your pool professional to help you select the Pentair lighting system that will take your poolscape from fun during the day to fantastic at night.

Available from:



Pentair Pool Products®
800.831.7133
www.pentairpool.com

Sta-Rite®
800.831.7133
www.staritepool.com

pumps / filters / heaters / heat pumps / automation / lighting / cleaners / sanitizers / water features / maintenance products