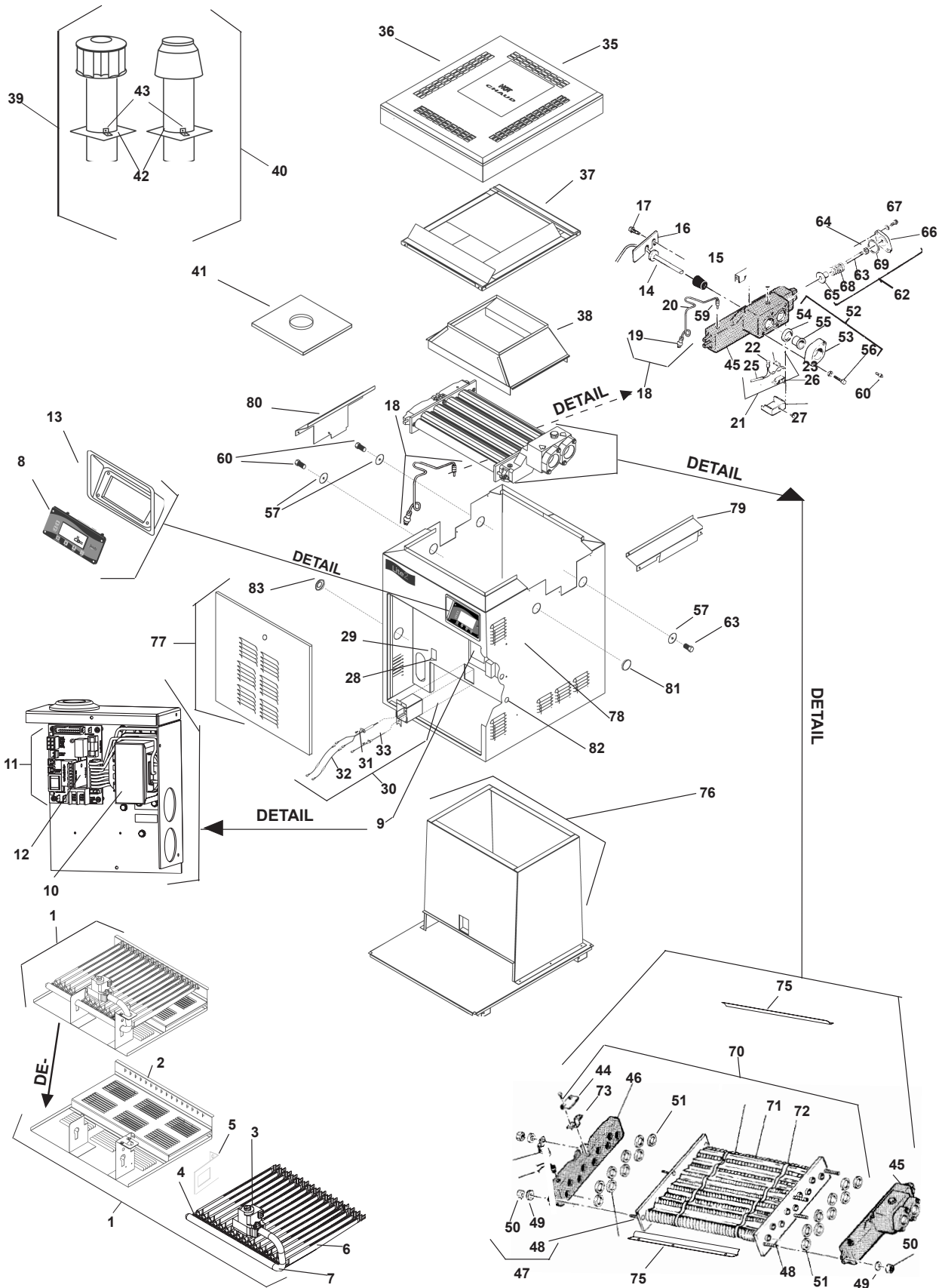


Laars Lite2™ LJ (Mfg. 2003-Present) Parts List and Diagram



## Laars Lite2™ LJ (Mfg. 2003-Present) Parts List and Diagram

Key No	Description	Model No	Order Part No.	Key No	Description	Model No	Order Part No.
<b>MAIN GAS ASSEMBLY</b>				<b>WATER SYSTEM (cont'd)</b>			
1	Burner Tray Assy, NAT	125-400	R0383601-05	47	Header Bolt Assembly (Set of 8)	All	R0057000
1	Burner Tray Assy, LPG	125-400	R0383701-05	48	Bolt for Headers, 2 1/2"	All	F0046100
2	Burner Tray, Shelf Only	125-400	R0317001-05	49	Washer for Headers	All	F0011100
3	Gas Valve, NAT	All	R0317100	50	Nut for Headers	All	F0003100
3	Gas Valve, LPG	All	R0319600	51	Header Gasket Assembly (Set of 18)	All	R0050800
4	Gas Orifice, NAT 0 - 3,000 ft alt. (EA.) (Note 1)	All	L0032200				
4	Gas Orifice, LPG 0 - 5,000 ft alt. (EA.) (Note 2)	All	L0032900	52	Flange & Gasket Assembly (Set of 2)	All	R0055000
5	Anti-Rotation Bracket	All	10835900	53	Flange, 2"	All	10573500
6	Burner, Main	All	L0052300	54	Flange Gasket, 2"	All	S0078000
7	Burner Manifold	125	L0052200	54	Flange Gasket, 1 1/2 - 2"	All	S0078100
7	Burner Manifold	175	L0006300	55	Flange Sleeve, 2"	All	S0078200
7	Burner Manifold	250	L0006400	56	Flange Bolt	All	F0031700
7	Burner Manifold	325	L0006500	57	Rubber Grommet for Drain Plug	All	R0316300
7	Burner Manifold	400	L0006600	58*	Grommet, Sealing, 2"	All	S0116200
<b>ELECTRICAL SYSTEM</b>				59	Brass Connector Body	All	P0019701
8	Heater Control Assembly	All	R0366200	60	Brass Drain Plug 1/4"	All	P0026800
9	High Voltage Assembly	All	R0366500	61	Brass Plug, 3/4"	All	P0027000
10	Transformer with Wiring Harness	All	R0366700	62	By-Pass Assembly w/o spring (Iron Cap)	All	R0013100
11	Power Control Board	All	R0366800	62	By-Pass Assembly with spring (Bronze Cap)	125-400	10701401-05
12	115/230 VAC Conversion Plug	All	R0366900	63	By-Pass Valve Rod	All	S0079800
13	Bezel	All	S0069800	64	Brass Nut (For Rod)	All	F0048400
14	Temperature Sensor	All	R0367000	65	By-Pass Valve Disc	All	R0011500
15	Gasket, Temperature Sensor	All	E0237700	66	By-Pass Valve Control Cap (Iron)	All	10452200
16	Temperature Sensor Retainer Bracket	All	10447300	66	By-Pass Valve Control Cap (Bronze)	All	10557400
17	Retainer Bracket Screw	All	F0009100	67	Control Cap Bolts (2 Required)	All	F0041600
18	Pressure Switch & Siphon Loop Assembly (2 PSI)	All	R0097600	68	By-Pass Valve Spring, Purple	125	S0079900
19	Pressure Switch, 2 PSI	All	R0013200	68	By-Pass Valve Spring, White	175	S0061400
19	Pressure Switch, 1 PSI	All	R0011300	68	By-Pass Valve Spring, Red	250	S0061300
19	Pressure Switch, 1-10 PSI	All	R0015500	68	By-Pass Valve Spring, Blue	325	S0061200
20	Siphon Loop Assembly	All	R0057800	68	By-Pass Valve Spring, Black	400	S0070100
21	High-Limit Switch Assembly	All	R0023200	69	By-Pass Valve Gasket	All	R0011400
22	High-Limit Switch, 135° F	All	R0022700	70	Heat Exch. Tube Assy. (Incl. set of 18 gaskets)	125-400	R0018101-05
23	High-Limit Switch, 150° F	All	R0023000	71	Heat Exchanger Baffle (8 Required)	125-400	10697401-05
24*	High-Limit Switch Retainer Boot	All	S0098900	72	Baffle Retainer	All	S0083900
25	High-Limit Switch Wire Harness	All	10419301	73	Heat Exchanger Support Clip (2 Required)	All	10457000
26	High-Limit Switch Retainer Clip	All	10418400	74*	Flow Restrictors (2 Required)	125	S0000300
27	High-Limit Switch Cover	All	10418300	75	Heat Exchanger End Baffles (2 Required)	125-400	R0332301-05
28	Fusible Link Assembly	All	R0012200	<b>FIREBOX COMPONENTS</b>			
29	Fusible Link Bracket	All	10479900	76	Complete Combustion Chamber Assy.	125-400	R0383101-05
30	Igniter Box Assembly Kit	All	R0383900	<b>JACKET COMPONENTS</b>			
31	Igniter	All	R0367100	77	Door with Latch	125-400	R0343601-05
32	Igniter Fuse Assy (set of 2)	All	R0383300	78	Jacket Assembly, Less Top Assembly	125-400	R0343501-05
33	Flame Sense Rod	All	R0367200	79	Gap Closure, Inlet/Outlet	All	R0344300
34*	Wire Harnesses, Temp/Ignition Control	All	R0366600	80	Gap Closure, Return	All	R0344400
<b>VENT SYSTEM</b>				81	Button Plug, 1-3/4"	All	F0035300
35	Top Enclosure	125-400	R0343401-05	82	Button Plug, 7/8"	All	F0032300
36	Top Filler Plate	125-400	R0343701-05	83	Button Plug, 2" (With hole for gas line)	All	F0056600
37	Rainshield Kit	125-400	R0318301-05	<b>OPTIONAL COMPONENTS</b>			
38	Flue Collector Assembly	125-400	R0316401-05	84*	Noncombustible Base	125-400	10521701-05
39	Outdoor Vent Cap (U.S.)	125-400	10561501-05	85	Pressure Relief Valve 3/4" NPT, 75 PSI	All	R0040400
39	Outdoor Vent Cap (Canada only)	125-400	10561511-15	86*	Touch Up Spray Paint, Pewter	All	X0022700
40	Indoor Drafthood (U.S.)	125-400	10561401-05	87*	Touch Up Spray Paint, Black	All	X0022900
40	Indoor Drafthood (Canada only)	125-400	10561411-15	88*	Remote Control Wire Harness	All	R0398400
41	Flue Transition Plate	125-400	10861901-05	<b>Notes:</b>			
42	Adapter Plate	125-400	10535301-05	1.	For altitudes 2,000 Ft above sea level, call factory for orifice size.		
43	Clip	All	10211000	2.	For altitudes 5,000 Ft above sea level, call factory for orifice size.		
44	Flue Collector Hold Down Clamp	All	10726000	3.	Gaskets and hardware are included in all kits that require the removal of a gasket as part of the procedure to replace a part.		
<b>WATER SYSTEM</b>				* Item not shown on exploded views.			
45	Inlet/Outlet Header, 2"	All	R0056400				
45	Inlet/Outlet Header, Bronze, 2"	All	R0016800				
46	Return Header (Includes set of 9 gaskets)	All	R0058300				
46	Return Header, Bronze(Includes set of 9 gaskets)	All	R0054600				