



INNOVATION MADE EZ™

NIDEC POOL & SPA PRODUCT CATALOG 2011




EMERSON
Motor Technologies



Nidec Motor Corporation

TABLE OF CONTENTS

Pool and Spa Replacement Guide	1
NEW PRODUCTS	
ECOTECH EZ™ Variable Speed Motor/Control	2
2EZ Speed™ Two Speed Motor with Timer	3
High Efficient 56-Frame C- and Square-Flange Open Dripproof	4
Totally Enclosed Fan Cooled Motors	5
56-Frame Square Flange Motors	6
Hayward Tristar® Replacement Motors	7
56-Frame Square Flange Motors	8 - 9
Hayward Northstar® Replacement Motors	9
EZ48 MOTORS	
Square Flange	10
C Flange Motors	11
Pool Cleaner Replacement Motors	12
Three-Phase Motors	12
THRU-BOLT MOTORS	
56-Frame	13
48-Frame	14 - 15
Jetted Tub Motor and Pump Replacement	16
Pentair EQ Pump Series Replacement Pool Motors	17
Close Coupled Pump Motors	18 - 25
Replacement Motor Cross Reference	16 - 31



All motors are sold pursuant to Nidec Motor Corporation standard terms and conditions of sale which can be found at http://www.nidec-motor.com/Nidec_terms.pdf

Square Flange and C-Flange Motors

Motors and pumps need to be properly matched to one another to provide consistent, predictable performance. When selecting your Emerson™ replacement motor you will need to know six important pieces of information:

- 1) Pump Mounting (ie. Square Flange, C-Flange, etc.)
- 2) Horsepower
- 3) Service Factor
- 4) Voltage
- 5) Frequency
- 6) Phase

Most of this information can be attained from the motor nameplate. Always be sure that the total of horsepower times service factor of your new Emerson® motor is equal to or greater than the total of horsepower times service factor of the original motor.

**Total Output HP = (horsepower) X (service factor)
= THP or SFHP**

PUMP OEM	BRAND NAME	CATEGORY
American	American Eagle	J
American	(Ultra-Flow/Power Pump)	S
Aqua Flo	Ultra flow	C
Aqua Flo	Dominator	S
Astral	2000 Series	J
Baker Hydro	Hydron	J
Hayward	Super Pump ^{††}	J
Hayward	Super Pump ^{††} II	J
Hayward	Max-Flo ^{††}	J
Hayward	Max-Flo II [†]	S
Hayward	Northstar	N
Hayward	Tristar ^{††}	T
ITT Marlow	Argonaut	J
Jacuzzi Bros.	Bronze	C
Jacuzzi Bros.	Cygnets ^{††}	S
Jacuzzi Bros.	Plastic	J
Jacuzzi Bros.	Magnum ^{††} /Magnum Force ^{††}	J
Letro	Legend ^{††}	P
Pentair/American	Ultra-Flow ^{††}	S
Pentair/Pac Fab	Challenger ^{††}	S
Pentair/Pac Fab	Hydro Pump ^{††}	C
Pentair/Purex	Pinnacle ^{††}	S
Pentair/Purex/Hydrotech		J
Polaris	Vac-Sweep ^{††} PB4 Booster Pump	P
Premier/Springwater		C
Speck Pumps	Models 90, 98, 423,433, 21-80	J
Sta-Rite	Dura-Glas ^{††} /Max-E-Glas ^{††}	S
Sta-Rite	Dura-Glas ^{††} II/Max-E-Glas ^{††} II	S
Waterway	SVL56	S
Wet Institute		C
WMC		J

CATEGORY "N" HAYWARD NORTHSTAR C-FLANGE THREADED SHAFT			
HP	SERVICE FACTOR	VOLTAGE	ENERGY EFFICIENT extreme-E™ 6.5" Frame
3/4	1.85	208-230/115	ESN1072
1	1.40	208-230/115	EUSN1102
1	1.85	208-230/115	ESN1102
1.5	1.25	208-230/115	EUSN1152
1.5	1.60	208-230/115	ESN1152
2	1.20	208-230/115	EUSN1202
2	1.35	208-230	ESN1202
3	1.20	208-230	EUSN1302
3	1.60	208-230	ESN1302

CATEGORY "C" NEMA C-FLANGE KEYED SHAFT				
HP	SERVICE FACTOR	VOLTAGE	STANDARD EFFICIENCY 6.5" Frame	ENERGY EFFICIENT extreme-E™ 6.5" Frame
1/2	1.60	230/115	EB120	EB656
3/4	1.50	230/115	EB121	EB634
1	1.40	230/115	EB122	EB653
1.5	1.30	230/115	EB123	EB795
2	1.20	230	EB124	EB808
3	1.15	208-230		EB817

CATEGORY "T" HAYWARD TRISTAR REPLACEMENTS-SQUARE FLANGE				
HP	SERVICE FACTOR	VOLTAGE	STANDARD EFFICIENCY 6.5" Frame	ENERGY EFFICIENT extreme-E™ 6.5" Frame
1/2	1.98	208-230/115		ET3205
3/4	1.85	208-230/115		ET3207
3/4	1.25	230/115	EB852	
1	1.85	208-230/115		ET3210
1	1.25	230/115	EB853	
1.5	1.60	208-230/115		ET3215
1.5	1.10	230/115	EB854	
2	1.35	208-230		ET3220
2	1.10	230/115	EB859	
2.5	1.04	230	EB840	
3	1.20	208-230		ET3230
3	1.15	208-230	EB844	

CATEGORY "J" NEMA C-FLANGE THREADED SHAFT					
HP	SERVICE FACTOR	VOLTAGE	STANDARD EFFICIENCY 6.5" Frame 5.5" Frame		ENERGY EFFICIENT extreme-E™ 6.5" Frame 5.5" Frame
1/2	1.60	230/115	EB126	EST1052	EB657 ECT1052
3/4	1.00	230/115	EB227	EUST1072	
	1.50	230/115	EB127	EST1072	EB638 ECT1072
1	1.00	230/115	EB228	EUST1102	
	1.40	230/115	EB128	EST1102	EB654 ECT1102
1.5	1.00	230/115	EB229	EUST1152	
	1.30	230/115	EB129	EST1152	EB796
2	1.00	230/115	EB230	EUST1202	
	1.20	230	EB130	EST1202	EB809
2.5	1.00	230	EB231	EUST1252	
3	1.15	208-230			EB818
5	1.00	208-230			EB819

CATEGORY "S" SQUARE FLANGE				
HP	SERVICE FACTOR	VOLTAGE	STANDARD EFFICIENCY 6.5" Frame 5.5" Frame	ENERGY EFFICIENT extreme-E™ 6.5" Frame 5.5" Frame
1/2	1.30	230/115	EB856 EUSQ1052	
	1.90	230/115	EB846 ESQ1052	EB845 EQC1052
3/4	1.27	230/115	EB852 EUSQ1072	EUQC1072
	1.65	230/115	EB847 ESQ1072	EB661 EQC1072
1	1.25	230/115	EB853 EUSQ1102	EUQC1102
	1.65	230/115	EB848 ESQ1102	EB841 EQC1102
1.5	1.10	230/115	EB854 EUSQ1152	EUQC1152
	1.50	230/115	EB858 ESQ1152	EB842
2	1.10	230/115	EB859 EUSQ1202	
	1.30	230	EB748 ESQ1202	EB843
2.5	1.04	230	EB840 EUSQ1252	
3	1.15	208-230	EB844	EB844
5	1.00	208-230		EB850

CATEGORY "P" POOL CLEANERS				
HP	SERVICE FACTOR	VOLTAGE	BRAND	EMERSON 56™ 6.5" Frame
3/4	1.50	230/115	Polaris	EB625
	1.50	230/115	Letro	EB668

† All marks shown within this document are properties of their respective owners.

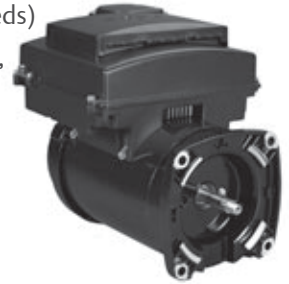
ecotech **EZ™** VARIABLE SPEED MOTOR/CONTROL



POOL AND SPA MOTORS Switchless Design 6.5" Frame Diameter: CATEGORY "S" & "J"

Features:

- Shaft Threads (Square Flange) 1/2-20 UNF-2A (C-Face) 7/16-20 UNF-2A
- 50°C Ambient
- Triple Bearing Protection
- 1081 Design
- Continuous Duty
- Class B Insulated
- Totally Enclosed Fan Cooled
- Sealed Ball Bearings
- 90% Motor Efficiency
- 303 Stainless Steel Shaft
- 6.5" Diameter Frame
- Brushless Permanent Magnet Motor
- Variable RPM, 1035-3450
- California Title 20 Compliant
- One Size Fits Most Pump Ratings
- Fully Integrated Motor Control
- Program for Various Flows (Speeds)
- Monday thru Friday and Sat/Sun, two settings each
- Four Custom Flow Settings
- Freeze Sensor
- Vacuum Override
- SVRS Mode



HP	SF	RPM	VOLTS	FREQ	SF AMPS	CATALOG #	MOTOR FRAME	LENGTH LESS SHAFT	WGT
C-Face Premium Energy Efficient Full/Low Service Factor Full/Up Rated									
3	1.15	VARIABLE	230	60	14	EVSJ3*	56J	13.09	43
Square Flange Premium Energy Efficient Low Service Factor Full/Up Rated									
3	1.15	VARIABLE	230	60	14	EVSS3*	56Y	13.25	42



Catalog numbers are for competitive comparison purposes only.
 *Meets California Energy Commission Appliance Regulations 2008 (Publication Number CEC-400-2006-002-REV1)

2EZ SPEED™ TWO SPEED WITH TIMER



SQUARE FLANGE POOL AND SPA MOTORS Switchless Design 6.5” Frame Diameter: **CATEGORY “S”**

Features:

- Two Compartment
- Shaft Threads - 1/2-20 UNF-2A
- 50°C Ambient
- Triple Bearing Protection
- 1081 Design
- Continuous Duty
- Class B Insulated
- Open Dripproof
- Sealed Ball Bearings
- Switchless Design
- 303 Stainless Steel Shaft
- Thermally Protected
- 6.5” Diameter Frame
- Fully Integrated Motor Timer
- Program for Low & High Speeds
- Two Settings - Monday thru Friday and Sat/Sun
- High/Low Speed Override
- Freeze Sensor



HP	SF	RPM	VOLTS	FREQ	SF AMPS	CATALOG #	MOTOR FRAME	LENGTH LESS SHAFT	WGT
Premium Energy Efficient Full Service Factor Full Rated									
3/4/.12	1.67	3450/1725	230	60	5.8/1.2	*EB2980T	56Y	12.05	32
1.0/.16	1.65	3450/1725	230	60	7.4/1.3	*EB2982T	56Y	12.30	34
1.5/.25	1.47	3450/1725	230	60	9.2/2.1	*EB2983T	56Y	12.55	36
2.0/.33	1.30	3450/1725	230	60	10.6/2.4	*EB2984T	56Y	13.30	39

2EZ SPEED™ TWO SPEED WITH TIMER

G-FLANGE POOL AND SPA MOTORS Switchless Design 6.5” Frame Diameter: **CATEGORY “J”**

Features:

- Two Compartment
- Shaft Threads - 7/16-20 UNF-2A
- 50°C Ambient
- Triple Bearing Protection
- 1081 Design
- Continuous Duty
- Class B Insulated
- Open Dripproof
- Sealed Ball Bearings
- Switchless Design
- 303 Stainless Steel Shaft
- Thermally Protected
- 6.5” Diameter Frame
- Fully Integrated Motor Timer
- Program for Low & High Speeds
- Two Settings - Monday thru Friday and Sat/Sun
- High/Low Speed Override
- Freeze Sensor
- California Title 20 Compliant

HP	SF	RPM	VOLTS	FREQ	SF AMPS	CATALOG #	MOTOR FRAME	LENGTH LESS SHAFT	WGT
Premium Energy Efficient Full Service Factor Full Rated									
3/4/.10	1.50	3450/1725	230	60	5.6/1.2	*EB2973HT	56J	12.27	31
1.0/.12	1.40	3450/1725	230	60	6.5/1.3	*EB2975T	56J	12.27	33
1.5/.20	1.30	3450/1725	230	60	8.2/2.0	*EB2977T	56J	12.27	35
2.0/.25	1.20	3450/1725	230	60	10.0/2.1	*EB2979T	56J	12.52	38

Catalog numbers are for competitive comparison purposes only.
 *Meets California Energy Commission Appliance Regulations 2008 (Publication Number CEC-400-2006-002-REV1)

extreme-E Extreme-E® motors represent our most efficient running, highest performing line of motors.



56-FRAME C-FLANGE POOL AND SPA MOTORS

56-FRAME C-FLANGE POOL AND SPA MOTORS Switchless Design 6.5" Frame Diameter: **CATEGORY "J"**

Features:

- Two Compartment
- Shaft Threads - 7/16-20 UNF-2A
- 50°C Ambient
- Triple Bearing Protection
- 1081 Design
- Continuous Duty
- Open Dripproof
- Class B Insulated
- Sealed Ball Bearings
- 303 Stainless Steel Shaft
- Switchless Design
- Thermally Protected



HP	SF	RPM	VOLTS	FREQ	SF AMPS	CATALOG #	MOTOR FRAME	LENGTH LESS SHAFT	WGT
Premium Energy Efficient Full Service Factor Full Rated									
3/4/.10	1.50	3450/1725	230	60	5.6/1.2	*EB2973H	56J	12.27	29
1.0/.12	1.40	3450/1725	230	60	6.5/1.3	*EB2975	56J	12.27	31
1.5/.20	1.30	3450/1725	230	60	8.2/2.0	*EB2977	56J	12.27	33
2.0/.25	1.20	3450/1725	230	60	10.0/2.1	*EB2979	56J	12.52	36

56-FRAME SQUARE FLANGE POOL AND SPA MOTORS

56-FRAME SQUARE FLANGE POOL AND SPA MOTORS Switchless Design 6.5" Frame Diameter: **CATEGORY "S"**

Features:

- Two Compartment
- Shaft Threads - 1/2-20 UNF-2A
- 50°C Ambient
- Triple Bearing Protection
- 1081 Design
- Continuous Duty
- Open Dripproof
- Class B Insulated
- Sealed Ball Bearings
- 303 Stainless Steel Shaft
- Switchless Design
- Thermally Protected



HP	SF	RPM	VOLTS	FREQ	SF AMPS	CATALOG #	MOTOR FRAME	LENGTH LESS SHAFT	WGT
Premium Energy Efficient Full Service Factor Full Rated									
3/4/.12	1.67	3450/1725	230	60	5.8/1.2	*EB2980	56Y	12.05	30
1.0/.16	1.65	3450/1725	230	60	7.4/1.3	*EB2982	56Y	12.30	32
1.5/.25	1.47	3450/1725	230	60	9.2/2.1	*EB2983	56Y	12.55	34
2.0/.33	1.30	3450/1725	230	60	10.6/2.4	*EB2984	56Y	13.30	37

Catalog numbers are for competitive comparison purposes only. Meets California Energy Commission Appliance Regulations 2008 (Publication Number CEC-400-2006-002-REV1), and many other similar State appliance energy regulations.

extreme-E Extreme-E® motors represent our most efficient running, highest performing line of motors.

C-FLANGE POOL AND SPA MOTORS

C-FLANGE POOL AND SPA MOTORS Switchless Design 6.5" Frame Diameter: **CATEGORY "J"**



Features:

- Shaft Threads - 7/16-20 UNF-2A
- Continuous Duty
- Switchless Design
- 50°C Ambient
- Class B Insulated
- 303 Stainless Steel Shaft
- Triple Bearing Protection
- Totally Enclosed Fan Cooled
- Thermally Protected
- 1081 Design
- Sealed Ball Bearings
- 6.5" Diameter Frame
- Superior Environmental Protection



HP	SF	RPM	VOLTS	FREQ	SF AMPS	CATALOG #	MOTOR FRAME	LENGTH LESS SHAFT	WGT
Premium Energy Efficient Full Service Factor Full Rated									
3/4	1.50	3450	208-230/115	60	5.4-5.0/10.0	ETE638	56J	10.32	29
1	1.40	3450	208-230/115	60	6.2-5.8/11.6	ETE654	56J	10.32	30
1.5	1.30	3450	208-230/115	60	8.7-7.8/15.6	ETE796	56J	11.32	37
2	1.20	3450	208-230	60	10.3-9.5	ETE809	56J	11.32	37

SQUARE FLANGE POOL AND SPA MOTORS

SQUARE FLANGE POOL AND SPA MOTORS Switchless Design 6.5" Frame Diameter: **CATEGORY "S"**

Features:

- Shaft Threads - 1/2 - 20 UNF-2A
- Class B Insulated
- 303 Stainless Steel Shaft
- 50°C Ambient
- Totally Enclosed Fan Cooled
- Thermally Protected
- Triple Bearing Protection
- Sealed Ball Bearings
- 6.5" Diameter Frame
- Continuous Duty
- Switchless Design
- Superior Environmental Protection
- 1081 Design

HP	SF	RPM	VOLTS	FREQ	SF AMPS	CATALOG #	MOTOR FRAME	LENGTH LESS SHAFT	WGT
Premium Energy Efficient Full Service Factor Full Rated									
3/4	1.67	3450	208-230/115	60	5.9-5.5/11.0	ETE661	56Y	11.27	30
1	1.65	3450	208-230/115	60	7.6-7.2/14.4	ETE841	56Y	11.27	31
1.5	1.47	3450	208-230/115	60	9.7-9.0/18.0	ETE842	56Y	12.27	38
2	1.30	3450	208-230	60	10.6-10.0	ETE843	56Y	12.27	38

Catalog numbers are for competitive comparison purposes only.

extreme-E Extreme-E® motors represent our most efficient running, highest performing line of motors.

SQUARE FLANGE POOL AND SPA MOTORS

Switchless Design 6.5" Frame Diameter: **CATEGORY "S"**

Features:

- Two Compartment
- 1081 Design
- Open Dripproof
- 303 Stainless Steel Shaft
- Shaft Threads - 1/2-20 UNF-2A
- Voltage Selection Device (Dual Voltage Only)
- Switchless Design
- 6.5" Diameter Frame
- Triple Bearing Protection
- Continuous Duty
- Sealed Ball Bearings
- Class B Insulated
- Thermally Protected
- 50°C Ambient



HP	SF	RPM	Volt	FREQ	SF AMPS	CATALOG NUMBER	MOTOR FRAME	LENGTH LESS SHAFT	WGT
Standard Efficient Full Service Factor Full Rated									
1/2	1.95	3450	230/115	60	5.4/10.8	*EB846	56Y	11.24	22
3/4	1.65	3450	230/115	60	7.0/14.0	EB847	56Y	11.74	25
1	1.65	3450	230/115	60	7.7/15.4	EB848	56Y	11.74	26
1.5	1.50	3450	230/115	60	10.8/21.6	EB858	56Y	12.99	33
2	1.30	3450	230	60	11.5	EB748	56Y	12.74	33
3	1.15	3450	208-230	60	14.8-13.5	EB844	56Y	13.49	40
5	1.00	3450	208-230	60	21.0-19.4	EB850 ^Δ	56Y	15.24	52
Standard Efficient Low Service Factor Up - Rated									
3/4	1.25	3450	230/115	60	5.4/10.8	*EB852	56Y	11.24	22
1	1.25	3450	230/115	60	7.0/14.0	EB853	56Y	11.74	25
1.5	1.10	3450	230/115	60	7.7/15.4	EB854	56Y	11.74	26
2	1.10	3450	230/115	60	10.8/21.6	EB859	56Y	12.99	33
2.5	1.04	3450	230	60	11.5	EB840	56Y	12.74	33
Premium[®] Energy Efficient Full Service Factors Full Rated (Suitable for 50Hz, 1.0 Service Factor)									
1/2	1.90	3450	208-230/115	60	4.4-4.2/8.4	*EB845	56Y	11.49	25
3/4	1.67	3450	208-230/115	60	5.9-5.5/11.0	EB661	56Y	11.99	28
1	1.65	3450	208-230/115	60	7.6-7.2/14.4	EB841	56Y	11.99	30
1.5	1.47	3450	208-230/115	60	9.7-9.0/18.0	EB842	56Y	12.99	35
2	1.30	3450	208-230	60	10.6-10.0	EB843	56Y	12.99	35
3	1.15	3450	208-230	60	14.8-13.5	EB844	56Y	13.49	40
5	1.00	3450	208-230	60	21.0-19.4	EB850 ^Δ	56Y	15.24	52
Premium[®] Energy Efficient TWO SPEED Full Service Factor Full Rated Soft Start Switch Design									
3/4/.12	1.67	3450/1725	230	60	6.2/2.4	*EB980	56Y	12.30	30
3/4/.12	1.67	3450/1725	115	60	14.5/5.3	*EB981	56Y	12.30	30
1/.16	1.65	3450/1725	230	60	8.0/2.9	*EB982	56Y	12.55	34
1.5/.25	1.47	3450/1725	230	60	10.0/3.5	*EB983	56Y	13.05	42
2/.33	1.30	3450/1725	230	60	11.0/4.0	*EB984	56Y	13.30	47

Catalog numbers are for competitive comparison purposes only.

Sta-Rite Max-E-GLAS & DURA-GLAS Replacement Motor Base Available B357434490000L

NOTE: Toggle switch cover assembly available for two speed models - LO-OFF-HI- X297576970000L

*Meets California Energy Commission Appliance Regulations 2008 (Publication Number CEC-400-2006-002-REV1)

extreme-E Extreme-E[®] motors represent our most efficient running, highest performing line of motors.

^Δ190 Volt Maximum Operating Voltage for 50 Hz

HAYWARD TRISTAR® Replacement Square Flange

6.5" Frame Diameter: **CATEGORY "T"**

Features:

- Two Compartment
- 1081 Design
- Open Dripproof
- 303 Stainless Steel Shaft
- Shaft Threads-1/2-20 UNF-2A
- Continuous Duty
- Thermally Protected
- 60°C Ambient
- Voltage Selection Device (Dual Voltage Only)
- Switchless Design
- 6.5" Diameter Frame
- Triple Bearing Protection
- Class B Insulated
- Sealed Ball Bearings



HP	SF	RPM	Volt	FREQ	SF AMPS	CATALOG NUMBER	MOTOR FRAME	LENGTH LESS SHAFT	WGT
Premium Energy Efficient Full Service Factor Full Rated (Switch Design)									
1/2	1.98	3450	208-230/115	60	5.3-4.9/9.8	* ET3205	56Y	11.49	24
3/4	1.85	3450	208-230/115	60	7.0-6.2/12.4	ET3207	56Y	11.74	26
1	1.85	3450	208-230/115	60	8.5-7.4/14.8	ET3210	56Y	12.24	30
1.5	1.60	3450	208-230/115	60	11.2-10.2/20.4	ET3215	56Y	12.74	34
2	1.35	3450	208-230	60	11.8-11.0	ET3220	56Y	12.74	35
3	1.20	3450	208-230	60	16.0-14.8	ET3230	56Y	13.74	44
Standard Efficient Low Service Factor Up/Max Rated (50°C Ambient, Switchless Design)									
3/4	1.25	3450	230/115	60	5.4/10.8	*EB852	56Y	11.24	22
1	1.25	3450	230/115	60	7.0/14.0	EB853	56Y	11.74	25
1.5	1.10	3450	230/115	60	7.7/15.4	EB854	56Y	11.74	26
2	1.10	3450	230/115	60	10.8/21.6	EB859	56Y	12.99	33
2.5	1.04	3450	230	60	11.5	EB840	56Y	12.74	33
3	1.15	3450	208-230	60	14.8-13.5	EB844	56Y	13.49	40



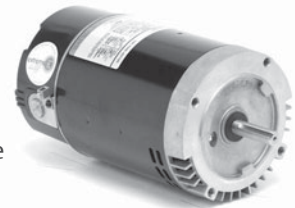
Catalog numbers are for competitive comparison purposes only.
 *Meets California Energy Commission Appliance Regulations 2008 (Publication Number CEC-400-2006-002-REV1)

C-FLANGE POOL AND SPA MOTORS

Switchless Design 6.5" Frame Diameter: **CATEGORY "C" AND "J"**

Features:

- Two Compartment
- Shaft Threads - 7/16-20 UNF-2A
- 50°C Ambient
- Triple Bearing Protection
- 1081 Design
- Continuous Duty
- Class B Insulated
- Open Dripproof
- Sealed Ball Bearings
- 303 Stainless Steel Shaft
- Thermally Protected
- 6.5" Diameter Frame
- Switchless Design
- Voltage Selection Device (Dual Voltage Only)



HP	SF	RPM	VOLT	FREQ	SF AMPS	SHAFT	CATALOG #	MOTOR FRAME	LENGTH LESS SHAFT	WGT
Standard Efficient Full Service Factor Full Rated										
1/2	1.60	3450	230/115	60	4.4/8.8	Keyed	*EB120	56C	10.27	21
1/2	1.60	3450	230/115	60	4.4/8.8	Threaded	*EB126	56J	10.27	21
3/4	1.50	3450	230/115	60	6.0/12.0	Keyed	EB121	56C	10.77	24
3/4	1.50	3450	230/115	60	6.0/12.0	Threaded	EB127	56J	10.77	24
1	1.40	3450	230/115	60	7.0/14.0	Keyed	EB122	56C	10.77	25
1	1.40	3450	230/115	60	7.0/14.0	Threaded	EB128	56J	10.77	25
1.5	1.30	3450	230/115	60	9.0/18.0	Keyed	EB123	56C	12.02	31
1.5	1.30	3450	230/115	60	9.0/18.0	Threaded	EB129	56J	12.02	31
2	1.20	3450	230	60	10.5	Keyed	EB124	56C	11.77	33
2	1.20	3450	230	60	10.5	Threaded	EB130	56J	11.77	33
3	1.15	3450	208-230	60	14.8-13.5	Keyed	EB817	56C	12.52	39
3	1.15	3450	208-230	60	14.8-13.5	Threaded	EB818	56J	12.52	39
5	1.00	3450	208-230	60	21.0-19.4	Threaded	EB819 ^A	56J	14.27	51
Standard Efficient Low Service Factor Up - Rated										
3/4	1.00	3450	230/115	60	4.4/8.8	Threaded	*EB227	56J	10.27	21
1	1.00	3450	230/115	60	6.0/12.0	Threaded	EB228	56J	10.77	24
1.5	1.00	3450	230/115	60	7.0/14.0	Threaded	EB229	56J	10.77	25
2	1.00	3450	230/115	60	9.0/18.0	Threaded	EB230	56J	12.02	31
2.5	1.00	3450	230	60	10.5	Threaded	EB231	56J	11.77	33
Premium Energy Efficient Full Service Factors Full Rated (Suitable for 50Hz, 1.0 Service Factor)										
1/2	1.60	3450	208-230/115	60	4.0-3.7/7.4	Keyed	*EB656	56C	10.52	24
1/2	1.60	3450	208-230/115	60	4.0-3.7/7.4	Threaded	*EB657	56J	10.52	24
3/4	1.50	3450	208-230/115	60	5.4-5.0/10.0	Keyed	EB634	56C	11.02	27
3/4	1.50	3450	208-230/115	60	5.4-5.0/10.0	Threaded	EB638	56J	11.02	27
1	1.40	3450	208-230/115	60	6.2-5.8/11.6	Keyed	EB653	56C	11.02	29
1	1.40	3450	208-230/115	60	6.2-5.8/11.6	Threaded	EB654	56J	11.02	29
1.5	1.30	3450	208-230/115	60	8.7-7.8/15.6	Keyed	EB795	56C	12.02	35
1.5	1.30	3450	208-230/115	60	8.7-7.8/15.6	Threaded	EB796	56J	12.02	35
2	1.20	3450	208-230	60	10.3-9.5	Keyed	EB808	56C	12.02	34
2	1.20	3450	208-230	60	10.3-9.5	Threaded	EB809	56J	12.02	34
3	1.15	3450	208-230	60	14.8-13.5	Keyed	EB817	56C	12.52	39
3	1.15	3450	208-230	60	14.8-13.5	Threaded	EB818	56J	12.52	39
5	1.00	3450	208-230	60	21.0-19.4	Threaded	EB819 ^A	56J	14.27	51
4	1.25	3450	208-230	60	21.0-19.4	Threaded	EB116 ^A	56Y	14.27	53

Catalog numbers are for competitive comparison purposes only.

Sta-Rite Max-E-GLAS & DURA-GLAS Replacement Motor Base Available B357434490000L

NOTE: Toggle switch cover assembly available for two speed models - LO-OFF-HI- X297576970000L

*Meets California Energy Commission Appliance Regulations 2008 (Publication Number CEC-400-2006-002-REV1)

extreme-E Extreme-E® motors represent our most efficient running, highest performing line of motors.

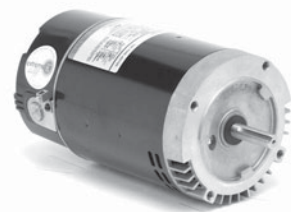
Δ190 Volt Maximum Operating Voltage for 50 Hz
B14 flange, metric shaft

C-FLANGE POOL AND SPA MOTORS

Switch Design 6.5" Frame Diameter (Continued): **CATEGORY "C" AND "J"**

Features:

- Two Compartment
- Shaft Threads - 7/16-20 UNF-2A
- 50°C Ambient
- Triple Bearing Protection
- 1081 Design
- Continuous Duty
- Class B Insulated
- Open Dripproof
- Sealed Ball Bearings
- 303 Stainless Steel Shaft
- Thermally Protected
- 6.5" Diameter Frame



HP	SF	RPM	VOLT	FREQ	SF AMPS	SHAFT	CATALOG #	MOTOR FRAME	LENGTH LESS SHAFT	WGT
Two Speed Full Service Factor Full Rated Soft Start										
3/4/.10	1.50	3450/1725	115	60	11.2/5.0	Keyed	*EB972	56C	11.02	28
3/4/.10	1.50	3450/1725	115	60	11.2/5.0	Threaded	*EB973	56J	11.02	28
3/4/.10	1.50	3450/1725	230	60	5.8/2.3	Keyed	*EB972H	56C	11.02	28
3/4/.10	1.50	3450/1725	230	60	5.8/2.3	Threaded	*EB973H	56J	11.02	28
1/.12	1.40	3450/1725	230	60	6.8/2.8	Keyed	*EB974	56C	11.27	32
1/.12	1.40	3450/1725	230	60	6.8/2.8	Threaded	*EB975	56J	11.27	32
1.5/.20	1.30	3450/1725	230	60	9.4/3.0	Keyed	*EB976	56C	11.77	40
1.5/.20	1.30	3450/1725	230	60	9.4/3.0	Threaded	*EB977	56J	11.77	40
2/.25	1.20	3450/1725	230	60	10.8/3.6	Keyed	*EB978	56C	12.02	45
2/.25	1.20	3450/1725	230	60	10.8/3.6	Threaded	*EB979	56J	12.02	45
3/.38	1.15	3450/1725	230	60	13.8/4.0	Threaded	*EB966	56J	12.52	49

HAYWARD NORTHSTAR Replacements C-FLANGE

Switchless Design 6.5" Frame Diameter Threaded Shaft: **CATEGORY "N"**

Features:

- Two Compartment
- Triple Bearing Protection
- Thermally Protected
- 1081 Design
- Shaft Threads-7/16-20 UNF-2A
- Class B Insulated
- Open Dripproof
- Continuous Duty
- 60° C Ambient
- 6.5" Diameter Frame
- 303 Stainless Steel Shaft
- Sealed Ball Bearings
- Voltage Selection Device (Dual Voltage Only)



HP	SF	RPM	VOLT	FREQ	SF AMPS	CATALOG #	MOTOR FRAME	LENGTH LESS SHAFT	WGT	
Premium Energy Efficient Full Service Factor Full Rated										
3/4	1.85	3450	208-230/115	60	6.0-5.5/11.0	ESN1072	56J	11.02	27	
1	1.85	3450	208-230/115	60	8.5-7.8/15.6	ESN1102	56J	11.27	30	
1.5	1.60	3450	208-230/115	60	11.0-10.2/20.4	ESN1152	56J	11.77	33	
2	1.35	3450	208-230	60	13.0-11.8	ESN1202	56J	11.77	35	
3	1.60	3450	208-230	60	20.6-19.0	ESN1302	56J	14.02	47	
Premium Energy Efficient Low Service Factor Up /Max Rated										
1	1.40	3450	208-230/115	60	6.0-5.5/11.0	EUSN1102	56J	11.02	27	
1.5	1.25	3450	208-230/115	60	8.5-7.8/15.6	EUSN1152	56J	11.27	30	
2	1.20	3450	208-230/115	60	11.0-10.2/20.4	EUSN1202	56J	11.77	33	
2.5	1.10	3450	208-230	60	13.0-11.8	EUSN1252	56J	11.77	35	
3	1.20	3450	208-230	60	16.0-14.8	EUSN1302	56J	12.52	41	

Catalog numbers are for competitive comparison purposes only.
 *Meets California Energy Commission Appliance Regulations 2008 (Publication Number CEC-400-2006-002-REV1)

SQUARE FLANGE POOL AND SPA MOTORS

Switch Design 5.5" Frame Diameter: **CATEGORY "S"**

Features:

- Two Compartment
- Shaft Threads - 1/2-20 UNF-2A
- 50°C Ambient
- Triple Bearing Protection
- 1081 Design
- Continuous Duty
- Open Dripproof
- Sealed Ball Bearings
- Thermally Protected
- Class B Insulated
- 303 Stainless Steel Shaft
- Voltage Selection Device (Dual Voltage Only)



HP	SF	RPM	Volt	FREQ	SF AMPS	CATALOG NUMBER	MOTOR FRAME	LENGTH LESS SHAFT	WGT
Standard Efficient Full Service Factor Full Rated									
1/2	1.95	3450	230/115	60	5.9/11.8	ESQ1052	48Y	11.03	21
3/4	1.65	3450	230/115	60	7.5/15.0	ESQ1072	48Y	11.78	24
1.0	1.65	3450	230/115	60	8.5/17.0	ESQ1102	48Y	12.28	26
1.5	1.50	3450	230/115	60	9.7/19.4	ESQ1152▲	48Y	12.53	29
2.0	1.30	3450	230	60	10.4	ESQ1202▲	48Y	12.78	31
Standard Efficient Low Service Factor Up - Rated									
1/2	1.30	3450	230/115	60	4.9/9.8	EUSQ1052	48Y	10.78	19
3/4	1.25	3450	230/115	60	5.9/11.8	EUSQ1072	48Y	11.03	21
1.0	1.25	3450	230/115	60	7.5/15.0	EUSQ1102	48Y	11.78	24
1.5	1.10	3450	230/115	60	8.5/17.0	EUSQ1152	48Y	12.28	26
2.0	1.10	3450	230/115	60	9.7/19.4	EUSQ1202▲	48Y	12.53	29
2.5	1.04	3450	230	60	10.4	EUSQ1252▲	48Y	12.78	31
High Efficiency Design Full Service Factor Full Rated									
1/2	1.90	3450	230/115	60	4.7/9.4	*EQC1052▲	48Y	10.78	21
3/4	1.65	3450	230/115	60	6.3/12.6	EQC1072▲	48Y	11.28	23
1.0	1.65	3450	230/115	60	7.8/15.6	EQC1102▲	48Y	11.78	26
High Efficiency Design Low Service Factor Up Rated									
3/4	1.27	3450	230/115	60	4.7/9.4	*EUQC1072▲	48Y	10.78	21
1.0	1.25	3450	230/115	60	6.3/12.6	EUQC1102▲	48Y	11.28	23
1.5	1.10	3450	230/115	60	7.8/15.6	EUQC1152▲	48Y	11.78	26



Catalog numbers are for competitive comparison purposes only.

Sta-Rite Max-E-GLAS & DURA-GLAS Replacement Motor Base Available B3574344900000L

*Meets California Energy Commission Appliance Regulations 2008 (Publication Number CEC-400-2006-002-REV1)

▲High Efficiency, Capacitor Start/Run Design

C-FLANGE POOL AND SPA MOTORS

Switch Design 5.5" Frame Diameter Threaded Shaft: **CATEGORY "J"**

Features:

- Two Compartment
- Triple Bearing Protection
- Thermally Protected
- 1081 Design
- Shaft Threads-7/16-20 UNF-2A
- Class B Insulated
- Open Dripproof
- Continuous Duty
- 50°C Ambient
- 303 Stainless Steel Shaft
- Sealed Ball Bearings
- Voltage Selection Device (Dual Voltage Only)



HP	SF	RPM	Volt	FREQ	SF AMPS	CATALOG NUMBER	MOTOR FRAME	LENGTH LESS SHAFT	WGT
Standard Efficient Full Service Factor Full Rated									
1/2	1.60	3450	230/115	60	5.0/10.0	EST1052	56J	9.34	19
3/4	1.50	3450	230/115	60	6.8/13.6	EST1072	56J	10.09	22
1.0	1.50	3450	230/115	60	7.8/15.6	EST1102	56J	10.59	24
1.5	1.30	3450	230/115	60	8.4/16.8	EST1152▲	56J	10.84	27
2.0	1.30	3450	230	60	10.0	EST1202▲	56J	11.09	29
Standard Efficient Low Service Factor Up - Rated									
3/4	1.00	3450	230/115	60	5.0/10.0	EUST1072	56J	9.34	19
1.0	1.00	3450	230/115	60	6.8/13.6	EUST1102	56J	10.09	22
1.5	1.00	3450	230/115	60	7.8/15.6	EUST1152	56J	10.59	24
2.0	1.00	3450	230/115	60	8.4/16.8	EUST1202▲	56J	10.84	27
2.5	1.00	3450	230	60	10.0	EUST1252▲	56J	11.09	29
High Efficiency Design Full Service Factor Full Rated									
1/2	1.60	3450	230/115	60	4.0/8.0	*ECT1052▲	56J	9.34	20
3/4	1.50	3450	230/115	60	5.5/11.0	ECT1072▲	56J	9.84	22
1.0	1.50	3450	230/115	60	7.0/14.0	ECT1102▲	56J	10.34	25



Catalog numbers are for competitive comparison purposes only.

*Meets California Energy Commission Appliance Regulations 2008 (Publication Number CEC-400-2006-002-REV1)

▲High Efficiency, Capacitor Start/Run Design

POOL CLEANER REPLACEMENT MOTORS

Switchless Design 6.5" Frame Diameter: **CATEGORY "P"**

Features:

- Two Compartment
- Shaft Threads - 1/2-20 UNF-2A
- 50°C Ambient
- Triple Bearing Protection
- 1081 Design
- Continuous Duty
- Voltage Selection Device
- Class B Insulated
- Open Dripproof
- Sealed Ball Bearings
- Switchless Design
- 303 Stainless Steel Shaft
- Thermally Protected
- 6.5" Diameter Frame



HP	SF	RPM	Volt	FREQ	SF AMPS	CATALOG NUMBER	MOTOR FRAME	LENGTH LESS SHAFT	WGT	REPLACEMENT BRAND
3/4	1.50	3450	230/115	60	6.3/12.6	EB625	56CZ	10.77	24	Polaris
3/4	1.50	3450	230/115	60	6.0/12.0	EB668	56CZ	10.77	24	Letro/Pentair

THREE PHASE POOL AND SPA MOTORS

Features:

- Single Compartment
- Sealed Ball Bearings
- Triple Bearing Protection
- Open Dripproof
- Class B Insulated
- 303 Stainless Steel Shaft
- Continuous Duty
- 50°C Ambient
- Rated for 50Hz, 1.0 SF

HP	SF	RPM	VOLT	FREQ	SF AMPS	CATALOG NUMBER	MOTOR FRAME	LENGTH LESS SHAFT	WGT	SHAFT
Square Flange Full Service Factor Full Rated										
1/2	1.90	3450	208-230/460	60	2.9-2.6/1.3	*EH491	56Y	10.27	23	Threaded
3/4	1.65	3450	208-230/460	60	4.1-3.8/1.9	*EH492	56Y	10.27	23	Threaded
1	1.65	3450	208-230/460	60	4.8-4.6/2.3	*EH635	56Y	10.27	25	Threaded
1.5	1.47	3450	208-230/460	60	6.4-6.2/3.1	*EH636	56Y	10.52	28	Threaded
2	1.30	3450	208-230/460	60	7.0-6.6/3.3	*EH637	56Y	11.02	33	Threaded
3	1.15	3450	208-230/460	60	9.6-9.4/4.7	*EH755	56Y	12.04	41	Threaded
C-Flange Keyed and Threaded Shaft Full Service Factor Full Rated										
1/2	1.60	3450	208-230/460	60	2.7-2.4/1.2	*EH281	56C	9.07	22	Keyed
1/2	1.60	3450	208-230/460	60	2.7-2.4/1.2	*EH282	56J	9.07	22	Threaded
3/4	1.50	3450	208-230/460	60	3.7-3.6/1.8	*EH450	56C	9.07	22	Keyed
3/4	1.50	3450	208-230/460	60	3.7-3.6/1.8	*EH451	56J	9.07	22	Threaded
1	1.40	3450	208-230/460	60	4.4-4.2/2.1	*EH513	56C	9.07	24	Keyed
1	1.40	3450	208-230/460	60	4.4-4.2/2.1	*EH514	56J	9.07	24	Threaded
1.5	1.30	3450	208-230/460	60	6.0-5.8/2.9	*EH616	56C	9.31	27	Keyed
1.5	1.30	3450	208-230/460	60	6.0-5.8/2.9	*EH617	56J	9.31	27	Threaded
2	1.20	3450	208-230/460	60	6.6-6.4/3.2	*EH704	56C	9.82	32	Keyed
2	1.20	3450	208-230/460	60	6.6-6.4/3.2	*EH705	56J	9.82	32	Threaded
3	1.15	3450	208-230/460	60	9.6-9.4/4.7	*EH740	56C	10.82	40	Keyed
3	1.15	3450	208-230/460	60	9.6-9.4/4.7	*EH741	56J	10.82	40	Threaded

Catalog numbers are for competitive comparison purposes only.

Sta-Rite Max-E-GLAS & DURA-GLAS Replacement Motor Base Available B3574344900000L

*Meets California Energy Commission Appliance Regulations 2008 (Publication Number CEC-400-2006-002-REV1)

THRU BOLT POOL AND SPA

6.5" Frame Diameter

Features:

- Open Dripproof
- Thru Bolt Mount
- Class F Insulated
- Class B Temperature Rise
- 1081 & 1563 Design
- Sealed Ball Bearing
- Rigid Base
- Thermally Protected
- 60° C Ambient
- 3 O'clock Conduit
- Premium Energy Efficient Design
- Shaft Thread 3/8-16 UNC-2A



HP	SF	RPM	VOLT	FREQ	SF AMPS	CATALOG NUMBER	MOTOR FRAME	LENGTH LESS SHAFT	WGT	NOTES
Premium Energy Efficient Single Speed, Switchless Design										
1.5	1.0	3450	230/115	60	8.8/17.5	TS602	56Y	9.58	28	1
2.0	1.0	3450	230	60	10.0	TS603	56Y	9.58	31	
2.5	1.0	3450	230	60	11.0	TS604	56Y	9.58	32	
3.0	1.0	3450	230	60	12.0	TS605	56Y	10.08	35	
4.0	1.0	3450	230	60	16.4	TS606	56Y	10.58	39	
5.0	1.0	3450	230	60	19.5	TS607	56Y	12.58	50	
Premium Energy Efficient TWO SPEED Soft Start										
1.5/.18	1.0	3450/1725	230	60	8.0/3.0	*TT502	56Y	9.58	31	
2.0/.25	1.0	3450/1725	230	60	10.0/3.5	*TT503	56Y	10.08	35	
2.5/.33	1.0	3450/1725	230	60	11.0/3.8	*TT504	56Y	10.33	36	
3.0/.38	1.0	3450/1725	230	60	12.0/4.4	*TT505	56Y	10.83	41	
4.0/.50	1.0	3450/1725	230	60	16.4/4.8	*TT506	56Y	11.58	45	
5.0/.63	1.0	3450/1725	230	60	19.5/5.0	*TT507	56Y	12.08	48	

Notes:

1) Capacitor start design

*Meets California Energy Commission Appliance Regulations 2008 (Publication Number CEC-400-2006-002-REV1)

extreme-E Extreme-E® motors represent our most efficient running, highest performing line of motors.



THRU-BOLT POOL AND SPA MOTORS

5.5" Frame Diameter

Features:

- Open Dripproof
- Thru Bolt Mount
- Class F Insulated
- 1081, 1563 & 1795 Design
- Rigid Base
- 50°C Ambient
- 3 O'clock Conduit
- Shaft Thread - 3/8-16 UNC 2A RH
- Thermally Protected
- 3 1/2" Shaft Height
- Single Speed Switch Kit Available (X297271900000L)
- Two Speed Switch Kit Available (X2972706600000L)

HP	SF	RPM	VOLT	FREQ	SF AMPS	CATALOG NUMBER	MOTOR FRAME	LENGTH LESS SHAFT	WGT	NOTES
Single Speed										
1/2	1.0	3450	115	60	7.5	AGL50FL1	48Y	7.8	15	2,5
3/4	1.0	3450	115	60	10.0	AGL75FL1	48Y	7.8	17	2,5
3/4	1.0	3450	230	60	5.0	AGH75FL1	48Y	7.8	17	2,5
1	1.0	3450	115	60	12.0	AGL10FL1	48Y	8.4	22	2,5
1	1.0	3450	230	60	6.0	AGH10FL1	48Y	8.4	22	2,5
1.5	1.0	3450	230/115	60	7.7/15.4	AGD15FL1	48Y	8.9	25	2,5
2	1.0	3450	230	60	10.0	SPH20FLC1	48Y	10.2	27	4
2	1.0	3450	230	60	8.7	SPH20FL1	48Y	10.2	28	1
2.5	1.0	3450	230	60	10.0	SPH25FL1	48Y	10.2	31	1
3	1.0	3450	230	60	12.0	SPH30FL1	48Y	10.2	31	1
TWO SPEED Soft Start										
1/2/.06	1.0	3450/1725	115	60	6.4/2.8	AGL50FL2	48Y	7.8	17	2,3,5
3/4/.10	1.0	3450/1725	115	60	9.8/3.2	AGL75FL2	48Y	7.8	20	2,3,5
1/.12	1.0	3450/1725	115	60	10.3/3.8	AGL10FL2S	48Y	9.6	23	2,5
1/.12	1.0	3450/1725	230	60	5.2/2.0	AGH10FL2	48Y	9.6	23	2,3,5
1.5/.18	1.0	3450/1725	115	60	16.4/4.4	AGL15FL2CS	48Y	10.2	26	2
1.5/.18	1.0	3450/1725	230	60	8.2/2.4	AGH15FL2CS	48Y	10.2	26	2
1.5/.18	1.0	3450/1725	115	60	13.6/3.6	SPL15FL2S	48Y	10.2	27	1,4
2/.25	1.0	3450/1725	230	60	10.5/2.6	*SPH20FL2CS	48Y	10.2	29	4
2/.25	1.0	3450/1725	230	60	8.6/3.4	*SPH20FL2S	48Y	10.2	30	1,4
2.5/.33	1.0	3450/1725	230	60	11.0/3.3	*SPH25FL2S	48Y	10.2	32	1,4
3/.38	1.0	3450/1725	230	60	12.7/3.4	*SPH30FL2S	48Y	10.6	35	1,4
Single Speed 50Hz CE Certified										
3/4	1.0	3450/2850	220-240	60/50	5.3	AGH75FL150	48Y	7.9	21	2,5
1.0	1.0	3450/2850	220-240	60/50	6.3/6.0	AGH10FL150	48Y	8.2	23	2,5
Single Speed Less Rigid Base										
3/4	1.0	3450	115	60	10.0	AGL75FL1NB	48Y	7.8	17	2,5
1.0	1.0	3450	115	60	12.0	AGL10FL1NB	48Y	8.4	22	2,5

Hoffinger Replacement | Thru Bolt Mount | Less Rigid Base | Class B Insulated

HP	SF	RPM	VOLT	FREQ	SF AMPS	CATALOG NUMBER	MOTOR FRAME	LENGTH LESS SHAFT	WGT	REPLACEMENT BRAND
1	1.0	3450	115	60	9.1	AGL10FL1H1	48Y	9.4	12	Power Pack I
1	1.0	3450	115	60	10.0	AGL10FL1H2	48Y	9.6	12	Power Pack II
SPL	1.0	3450	115	60	12.0	AGL15FL1H2	48Y	10.1	15	Power Pack II

Notes: 1) Capacitor start/capacitor run (extra low running amps)

2) 416 Stainless Steel Extension

3) High Speed Start

4) 1563 & 1795 design only

5) Class B Insulated

*Meets California Energy Commission Appliance Regulations 2008 (Publication Number CEC-400-2006-002-REV1)

THRU-BOLT POOL AND SPA MOTORS

5.5" Frame Diameter

Features:

- Open Dripproof
- Thru Bolt Mount
- Class B Insulated
- Rigid Base
- 50° C Ambient
- 3 O'clock Conduit
- Single Speed Switch Kit Available (X2972712900000L)
- Thermally Protected
- 3 1/2" Shaft Height
- 1081, 1563 & 1795 Design
- Shaft Thread-3/8-16 UNC 2A RH
- Sealed Ball Bearings

HP	SF	RPM	VOLT	FREQ	SF AMPS	CATALOG NUMBER	MOTOR FRAME	LENGTH LESS SHAFT	WGT
Single Speed - Spa Circulator Pump Motors									
1/15	1.0	1725	115	60	1.3	EV115	48Y	7.25	11.4
1/15	1.0	1725	230	60	0.63	EV230	48Y	7.25	11.7

EZ48® THRU-BOLT POOL AND SPA MOTORS

5.5" Frame Diameter

Features:

- Open Dripproof
- Sealed Ball Bearings
- Class B Insulated
- 303 Stainless Steel Shaft
- 50° C Ambient
- 3 O'clock Conduit
- Shaft Thread-3/8-16 UNC 2A RH
- Rigid Base
- Thermally Protected
- 1081 Design
- 3 1/2" Shaft Height



HP	SF	RPM	VOLT	FREQ	SF AMPS	CATALOG NUMBER	MOTOR FRAME	LENGTH LESS SHAFT	WGT
Single Speed - 1.5 Compartment									
1/2	1.0	3450	115	60	7.5	EZBN23	48Y	8.7	15
3/4	1.0	3450	115	60	10.0	EZBN24	48Y	8.7	17
1.0	1.0	3450	115	60	12.0	EZBN25	48Y	9.3	22
1.5	1.0	3450	115	60	16.0	EZBV35	48Y	9.8	25
1.5	1.0	3450	230/115	60	7.7/15.4	EZBN35	48Y	9.8	25
TWO SPEED - 1.5 Compartment									
3/4/.10	1.0	3450/1725	115	60	9.8/3.2	EZBN36	48Y	8.7	17
1.0/.12	1.0	3450/1725	115	60	12.2/3.8	EZBN37	48Y	9.2	22
1.5/.18	1.0	3450/1725	115	60	16.0/4.8	EZBN50	48Y	11.6	25

Rocker Switch Cover Assembly available:

Two Speed - LO-OFF-HI-X2975862300000L

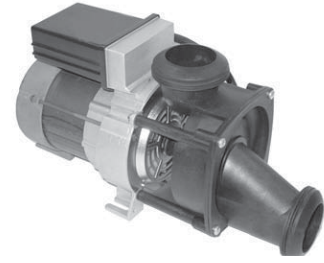
One Speed - ON-OFF-X2975862200000L

Catalog numbers are for competitive comparison purposes only.

JETTED TUB MOTOR AND PUMP REPLACEMENT

Features:

- Ball Bearings
- Thermally Protected
- 3 Foot #14 Cord with Standard Plug Provided
- Class F Insulated
- Self Draining Volute
- Industry Standard or Jacuzzi Style Thread on Discharge and Intake



CATALOG #	HP	SF	VOLTS	FREQUENCY	SF AMPS	MOTOR FRAME	LENGTH	FLOW RATE	PUMP THREADS	NOTE
EJT33†	1/3	1.0	115	60	4.4	4.1"	12.2"	65 GPM	2.5" - 8	Air Switch Included
EJT75†	3/4	1.0	115	60	7.0	4.1"	13.2"	85 GPM	2.5" - 8	Air Switch Included
EJT75NS†	3/4	1.0	115	60	7.0	4.1"	13.2"	85 GPM	2.5" - 8	No Air Switch Included
EJT33-J*	1/3	1.0	115	60	4.4	4.1"	12.2"	65 GPM	3" - 10	Air Switch Included
EJT75-J*	3/4	1.0	115	60	7.0	4.1"	13.2"	85 GPM	3" - 10	Air Switch Included
EJT75NS-J*	3/4	1.0	115	60	7.0	4.1"	13.2"	85 GPM	3" - 10	No Air Switch Included



† Industry Standard Thread on Discharge and Intake

*Jacuzzi Style Thread on Discharge and Intake

POOL AND SPA MOTORS - CLOSE COUPLED PUMPS**PENTAIR EQ PUMP SERIES REPLACEMENT POOL MOTORS****Features:**

- Special JMZ Mounting
- 40°C Ambient
- Continuous Duty
- Class F Insulated
- Open Dripproof
- Permanently lubricated ball bearings
- Rigid Base
- Black Paint
- Stainless Steel Ground Lug
- 303 Stainless Steel Shaft Extension

HP	PHASE	RPM	FRAME	VOLTS	CATALOG #	SF	FULL LOAD		SHIP WGT
							EFF	PF	
Premium Efficient Full Service Factor Full Rated									
5	1	3600	184JMZ	230	EEQ500	1.15	88.0%	94.0%	78
5	3	3600	182JMZ	208-230/460	EEQK500	1.15	89.5%	85.8%	50
7.5	3	3600	184JMZ	208-230/460	EEQK750	1.15	88.5%	87.0%	60
7.5	1	3600	213JMZ	230	EEQ750	1.15	87.0%	92.3%	70
10	3	3600	213JMZ	208-230/460	EEQK1000	1.15	90.2%	79.2%	90
15	3	3600	215JMZ	208-230/460	EEQK1500	1.15	91.0%	82.0%	105



THREE PHASE

TEFC

ENERGY EFFICIENT

APPLICATIONS: Designed for the specific requirements of centrifugal pumps where pump impeller is mounted directly on the motor shaft. Used in damp, dusty or dirty environments.

FOOTED JM SHAFT

CLOSE COUPLED PUMP

Features:

- Class F Insulation, Class B Rise At Full Load On 60 Hz Sine Wave Power
- Double Shielded Bearings
- Aluminum End Shields With Steel Bearing Inserts
- Lifting Provisions 180 Frame & Up
- Extruded Aluminum Frame (140: Rolled Steel)
- Removable Base 180 Frame & Up
- Regreasable Shaft End Bearing 180 Frame & Up
- 40°C Ambient, NEMA® Design B Performance On 60 Hz Sine Wave Power
- “CE” Mark On Nameplate

HP	RPM	VOLTS	FRAME	CATALOG NUMBER	DS SYM	SF	“C” DIM. (INCHES)	SHIP WGT	FULL LOAD EFF.	FULL LOAD AMPS	NOTES
1	1800	208-230/460	143JM	UJ1E2DM	DS-3PT	1.25	14.3	30	82.5	3.1-3.0/1.5	03,16
1-1/2	3600	208-230/460	143JM	UJ32E1DM	DS-3PT	1.25	14.3	30	82.5	4.3-3.9/1.9	03,16
	1800	208-230/460	145JM	UJ32E2DM	DS-3PT	1.25	14.3	35	84.0	4.6-4.4/2.2	03,16
2	3600	208-230/460	145JM	UJ2E1DM	DS-3PT	1.25	14.3	35	84.0	5.6-5.0/2.5	03,16
	1800	208-230/460	145JM	UJ2E2DM	DS-3PT	1.25	14.3	35	84.0	5.8-5.7/2.8	03,16
3	3600	208-230/460	145JM	UJ3E1DFM	DS-3PT	1.25	14.3	35	85.5	8.2-7.2/3.6	03,16
	3600	208-230/460	182JM	UJ3E1DM	DS-3PT	1.25	17.8	60	85.5	8.7-8.0/4.0	03,16
	1800	208-230/460	182JM	UJ3E2DM	DS-3PT	1.25	17.8	60	87.5	8.6-8.1/4.1	03,16
5	3600	208-230/460	184JM	UJ5E1DM	DS-3PT	1.25	17.8	70	87.5	13.8-12.3/6.1	03,16
	1800	208-230/460	184JM	UJ5E2DM	DS-3PT	1.25	17.8	70	87.5	14.0-12.7/6.4	03,16
7-1/2	3600	230/460	184JM	UJ7E1BFM	DS-3PT	1.15	17.8	70	88.5	17.9/9.0	
	3600	208-230/460	213JM	UJ7E1DM	DS-3PT	1.25	19.8	105	88.5	20.4-18.4/9.2	03,16
	1800	208-230/460	213JM	UJ7E2DM	DS-3PT	1.25	19.8	105	89.5	20.8-18.9/9.4	03,16
10	3600	208-230/460	215JM	UJ10E1DM	DS-3PT	1.25	21.3	120	89.5	26.7-23.8/11.9	03,16
	1800	208-230/460	215JM	UJ10E2DM	DS-3PT	1.25	21.3	120	89.5	27.5-24.8/12.4	03,16
15	3600	208-230/460	215JM	UJ15E1DFM	DS-3PT	1.25	22.3	120	90.2	40.0-35.0/17.6	03,16
	3600	208-230/460	254JM	UJ15E1DM	DS-3PT	1.25	25.4	180	90.2	40.0-35.0/17.6	03,16
	1800	208-230/460	254JM	UJ15E2DM	DS-3PT	1.25	25.4	180	91.0	41.0-38.0/19.0	03,16
20	3600	208-230/460	256JM	UJ20E1DM	DS-3PT	1.25	27.1	230	90.2	54.0-47.0/23.5	03,16
	1800	208-230/460	256JM	UJ20E2DM	DS-3PT	1.25	27.1	230	91.0	54.0-50.0/25.0	03,16
25	3600	208-230/460	256JM	UJ25E1DFM	DS-3PT	1.25	27.1	230	91.0	65.0-57.0/28.7	03,16
	3600	208-230/460	284JM	UJ25E1DM	DS-3PT	1.25	27.6	280	91.0	65.0-57.0/28.7	03,16
	1800	208-230/460	284JM	UJ25E2DM	DS-3PT	1.25	27.6	280	92.4	67.0-59.0/29.6	03,16
30	3600	208-230/460	286JM	UJ30E1DM	DS-3PT	1.25	29.1	300	91.0	79.0-68.0/34.0	03,16
	1800	208-230/460	286JM	UJ30E2DM	DS-3PT	1.25	29.1	300	92.4	80.0-72.0/36.0	03,16

Note 03: 60/50 Hz rated with no derate on HP; 230/460 volt 60 Hz ratings operate on 190/380 volt 50 Hz, 460V 60 Hz rating performance standards when operated at 208 volts;
Full 60 & 50 Hz data on Nameplate

Note 16: Motors marked 208-230/460 volts may not meet all NEMA (MG-1)

THREE PHASE

TEFC

ENERGY EFFICIENT

APPLICATIONS: Designed for the specific requirements of centrifugal pumps where pump impeller is mounted directly on the motor shaft. Used in damp, dusty or dirty environments.

FOOTED JP

CLOSE COUPLED PUMP

Features:

- Class F Insulation, Class B Rise At Full Load On 60 Hz Sine Wave Power
- Extruded Aluminum Frame (140: Rolled Steel)
- 40°C Ambient, NEMA®† Design B Performance On 60 Hz Sine Wave Power
- Double Shielded Bearings
- Removable Base 180 Frame & Up
- JP Shaft For Packing Seal and West Coast Pump Shaft
- Aluminum End Shields With Steel Bearing Inserts
- Regreasable Shaft End Bearing 180 Frame & Up
- “CE” Mark On Nameplate
- Lifting Provisions 180 Frame & Up

HP	RPM	VOLTS	FRAME	CATALOG NUMBER	DS SYM	SF	“C” DIM. (INCHES)	SHIP WGT	FULL LOAD EFF.	FULL LOAD AMPS	NOTES
1	1800	208-230/460	143JP	UJ1E2DP	DS-3PT	1.25	17.3	30	82.5	3.1-3.0/1.5	03,16
1-1/2	3600	208-230/460	143JP	UJ32E1DP	DS-3PT	1.25	17.3	30	82.5	4.3-3.9/1.9	03,16
	1800	208-230/460	145JP	UJ32E2DP	DS-3PT	1.25	17.3	35	84.0	4.6-4.4/2.2	03,16
2	3600	208-230/460	145JP	UJ2E1DP	DS-3PT	1.25	17.3	35	84.0	5.6-5.0/2.5	03,16
	1800	208-230/460	145JP	UJ2E2DP	DS-3PT	1.25	17.3	35	84.0	5.8-5.7/2.8	03,16
3	3600	208-230/460	145JP	UJ3E1DFP	DS-3PT	1.25	17.3	35	85.5	8.2-7.2/3.6	03,16
	3600	208-230/460	182JP	UJ3E1DP	DS-3PT	1.25	20.8	60	85.5	8.7-8.0/4.0	03,16
	1800	208-230/460	182JP	UJ3E2DP	DS-3PT	1.25	20.8	60	87.5	8.6-8.1/4.1	03,16
5	3600	208-230/460	184JP	UJ5E1DP	DS-3PT	1.25	20.8	70	87.5	13.8-12.3/6.1	03,16
	1800	208-230/460	184JP	UJ5E2DP	DS-3PT	1.25	20.8	70	87.5	14.0-12.7/6.4	03,16
7-1/2	3600	230/460	184JP	UJ7E1BP	DS-3PT	1.15	20.8	70	88.5	17.9/9.0	
	3600	208-230/460	213JP	UJ7E1DP	DS-3PT	1.25	23.6	105	88.5	20.4-18.4/9.2	03,16
	1800	208-230/460	213JP	UJ7E2DP	DS-3PT	1.25	23.6	105	89.5	20.8-18.9/9.4	03,16
10	3600	208-230/460	215JP	UJ10E1DP	DS-3PT	1.25	25.1	120	89.5	26.7-23.8/11.9	03,16
	1800	208-230/460	215JP	UJ10E2DP	DS-3PT	1.25	25.1	120	89.5	27.5-24.8/12.4	03,16
15	3600	208-203/460	215JP	UJ15E1DFP	DS-3PT	1.25	25.1	120	90.2	40.0-35.0/17.6	03,16
	3600	208-230/460	254JP	UJ15E1DP	DS-3PT	1.25	28.3	180	90.2	40.0-35.0/17.6	03,16
	1800	208-230/460	254JP	UJ15E2DP	DS-3PT	1.25	28.3	180	91.0	41.0-38.0/19.0	03,16
20	3600	208-230/460	256JP	UJ20E1DP	DS-3PT	1.25	30.0	230	90.2	54.0-47.0/23.5	03,16
	1800	208-230/460	256JP	UJ20E2DP	DS-3PT	1.25	30.0	230	91.0	54.0-50.0/25.0	03,16
25	3600	208-230/460	256JP	UJ25E1DFP	DS-3PT	1.25	30.0	230	91.0	65.0-57.0/28.7	03,16
	3600	208-230/460	284JP	UJ25E1DP	DS-3PT	1.25	30.5	280	91.0	65.0-57.0/28.7	03,16
	1800	208-230/460	284JP	UJ25E2DP	DS-3PT	1.25	30.5	280	92.4	67.0-59.0/29.6	03,16
30	3600	208-230/460	286JP	UJ30E1DP	DS-3PT	1.25	32.0	300	91.0	79.0-68.0/34.0	03,16
	1800	208-230/460	286JP	UJ30E2DP	DS-3PT	1.25	32.0	300	92.4	80.0-72.0/36.0	03,16

Note 03: 60/50 Hz rated with no derate on HP; 230/460 volt 60 Hz ratings operate on 190/380 volt 50 Hz, 460V 60 Hz ratings operate on 380V 50 Hz; Full 60 & 50 Hz data on Nameplate

Note 16: Motors marked 208-230/460 volts may not meet all NEMA (MG-1) performance standards when operated at 208 volts

THREE PHASE

TEFC

ENERGY EFFICIENT

APPLICATIONS: Designed for the specific requirements of centrifugal pumps where pump impeller is mounted directly on the motor shaft. Used in damp, dusty or dirty environments.

WESTCOAST SHAFT

Features:

- Footed
- Class F Insulation, Class B Rise At Full Load On 60 Hz Sine Wave Power
- Double Shielded Bearings
- Aluminum End Shields With Steel Bearing Inserts
- Lifting Provisions 180 Frame & Up
- Extruded Aluminum Frame (140: Rolled Steel)
- Removable Base 180 Frame & Up
- Regreasable Shaft End Bearing 180 Frame & Up
- 40°C Ambient, NEMA®† Design B Performance On 60 Hz Sine Wave Power
- JP Shaft For Packing Seal and West Coast Pump Shaft
- “CE” Mark On Nameplate

HP	RPM	VOLTS	FRAME	CATALOG NUMBER	DS SYM	SF	“C” DIM. (INCHES)	SHIP WGT	FULL LOAD EFF.	FULL LOAD AMPS	NOTES
7-1/2	3600	208-230/460	213TCZ	UJ7E1DJ	DS-3PT	1.25	22.8	105	88.5	20.4-18.4/9.2	03,16
	1800	208-230/460	213TCZ	UJ7E2DJ	DS-3PT	1.25	22.8	105	89.5	20.8-18.9/9.4	03,16
10	3600	208-230/460	215TCZ	UJ10E1DJ	DS-3PT	1.25	24.3	120	89.5	26.7-23.8/11.9	03,16
	1800	208-230/460	215TCZ	UJ10E2DJ	DS-3PT	1.25	24.3	120	89.5	27.5-24.8/12.4	03,16
15	3600	208-230/460	215TCZ	UJ15E1DJ	DS-3PT	1.25	25.3	120	90.2	40.0-35.0/17.6	03,16

Note 03: 60/50 Hz rated with no derate on HP; 230/460 volt 60 Hz ratings operate on 190/380 volt 50 Hz, 460V 60 Hz ratings operate on 380V 50 Hz; Full 60 & 50 Hz data on Nameplate

Note 16: Motors marked 208-230/460 volts may not meet all NEMA (MG-1) performance standards when operated at 208 volts



THREE PHASE

ODP

ENERGY EFFICIENT

APPLICATIONS: Designed for the specific requirements of centrifugal pumps where pump impeller is mounted directly on the motor shaft. Used in damp, dusty or dirty environments.

FOOTED JM SHAFT

CLOSE COUPLED PUMP

Features:

- Class F Insulation, Class B Rise At Service Factor
- Removable Base 180 Frame & Up Lifting Provisions 210 Frame & Up
- Rolled Steel Frame
- Double Shielded Bearings
- Aluminum End Shields 140-250, Cast Iron End Shields 280-320
- Oversized Ball Bearings w/Locked Shaft End Construction
- F1 Assembly Position
- Premasked Mylar Nameplate (with CE Mark)
- Full 50 & 60 Hertz Operating Data on Nameplate (03)

HP	RPM	VOLTS	FRAME	CATALOG NUMBER	DS SYM	SF	"C" DIM. (INCHES)	SHIP WGT	FULL LOAD EFF.	FULL LOAD AMPS	NOTES
1	1800	208-230/460	143JM	DJ1E2DM	DS-3FPO	1.15	15.4	30	82.5	3.1-3.0/1.5	16
1-1/2	3600	208-230/460	143JM	DJ32E1DM	DS-3FPO	1.15	15.4	30	82.5	4.3-4/2	16
	1800	208-230/460	145JM	DJ32E2DM	DS-3FPO	1.15	15.4	35	84.0	4.5-4.4/2.2	16
2	3600	208-230/460	145JM	DJ2E1DM	DS-3FPO	1.15	15.4	35	84.0	5.6-5.1/2.5	16
	1800	208-230/460	145JM	DJ2E2DM	DS-3FPO	1.15	15.4	35	84.0	6.0/5.9/3	16
	1800	575	145JM	DJ2E2GM	DS-3FPO	1.15	15.4	35	84.0	2.4	
3	3600	208-230/460	145JM	DJ3E1DM	DS-3FPO	1.15	15.4	40	84.0	8.3-7.5/3.7	16
	1800	208-230/460	182JM	DJ3E2DM	DS-3FPO	1.15	17.4	50	86.5	8.6-8.4/4.2	16
5	3600	208-230/460	182JM	DJ5E1DM	DS-3FPO	1.15	17.4	64	85.5	14.0-12.7/6.4	16
	3600	575	182JM	DJ5E1GM	DS-3FPO	1.15	17.4	70	85.5	5.1	
	1800	208-230/460	184JM	DJ5E2DM	DS-3FPO	1.15	17.4	75	87.5	14.0-12.7/6.4	16
7-1/2	1800	575	184JM	DJ5E2GM	DS-3FPO	1.15	17.4	75	87.5	5.1	
	3600	208-230/460	184JM	DJ7E1DM	DS-3FPO	1.15	17.4	85	87.5	20.4-18.1/9.1	16
	3600	575	184JM	DJ7E1GM	DS-3FPO	1.15	17.4	85	88.5	7.2	
	1800	208-230/460	213JM	DJ7E2DM	DS-3FPO	1.15	17.8	113	88.5	21-19.2/9.6	16
10	1800	575	213JM	DJ7E2GM	DS-3FPO	1.15	17.8	100	88.5	7.6	
	3600	208-230/460	213JM	DJ10E1DM	DS-3FPO	1.15	17.8	110	88.5	27.5-25.3/12.6	16
	3600	575	213JM	DJ10E1GM	DS-3FPO	1.15	17.8	110	88.5	10.2	
15	1800	208-230/460	215JM	DJ10E2DM	DS-3FPO	1.15	19.3	100	89.5	27.2-24.6/12.3	16
	3600	208-230/460	215JM	DJ15E1DM	DS-3FPO	1.15	19.3	140	89.5	41-36/18.1	16
	1800	208-230/460	254JM	DJ15E2DM	DS-3FPO	1.15	24.6	160	91.0	41-38/19.0	16
20	3600	208-230/460	254JM	DJ20E1DM	DS-3FPO	1.15	24.6	170	90.2	54-47/23.6	16
	3600	575	254JM	DJ20E1GM	DS-3FPO	1.15	24.6	170	90.2	18.9	
	1800	208-230/460	256JM	DJ20E2DM	DS-3FPO	1.15	25.2	195	91.0	55-50/24.8	16
25	3600	208-230/460	256JM	DJ25E1DM	DS-3FPO	1.15	25.2	200	91.0	66-58/29	16
	1800	208-230/460	284JM	DJ25E2DM	DS-3FPO	1.15	25.8	210	92.4	66-60/30	16

Continued on next page

Note 03: 60/50 Hz rated with no derate on HP; 230/460 volt 60 Hz ratings operate on 190/380 volt 50 Hz, 460V 60 Hz ratings operate on 380V 50 Hz; Full 60 & 50 Hz data on Nameplate

Note 16: Motors marked 208-230/460 volts may not meet all NEMA (MG-1) performance standards when operated at 208 volts

THREE PHASE

ODP

ENERGY EFFICIENT

APPLICATIONS: Designed for the specific requirements of centrifugal pumps where pump impeller is mounted directly on the motor shaft. Used where dirt and moisture are minimal.

FOOTED JM SHAFT (continued from previous page)

HP	RPM	VOLTS	FRAME	CATALOG NUMBER	DS SYM	SF	"C" DIM. (INCHES)	SHIP WGT	FULL LOAD EFF.	FULL LOAD AMPS	NOTES
30	3600	208-230/460	284JM	DJ30E1DM	DS-3FPO	1.15	25.8	230	91.0	80-70/35	16
	1800	208-230/460	286JM	DJ30E2DM	DS-3FPO	1.15	25.8	280	92.4	78-71/35	16
40	3600	208-230/460	286JM	DJ40E1DM	DS-3FPO	1.15	25.8	320	91.7	103-90/45	16
	3600	575	286JM	DJ40E1GM	DS-3FPO	1.15	25.8	320	91.7	36.0	
	1800	230/460	324JM	DJ40E2EM	DS-3FPO	1.15	27.5	395	93.0	92/46	
50	3600	230/460	324JM	DJ50E1EM	DS-3FPO	1.15	27.5	400	92.4	116/58	
	1800	230/460	326JM	DJ50E2EM	DS-3FPO	1.15	27.5	450	93.0	114/57	17
60	3600	230/460	326JM	DJ60E1EM	DS-3FPO	1.15	27.5	460	93.0	136/68	17

Note 16: Motors marked 208-230/460 volts may not meet all NEMA (MG-1) performance standards when operated at 208 volts

Note 17: Twelve leads for across-the-line or wye-delta start on either voltage, part winding start on lower voltage



THREE PHASE

ODP

ENERGY EFFICIENT

APPLICATIONS: Designed for the specific requirements of centrifugal pumps where pump impeller is mounted directly on the motor shaft. Used where dirt and moisture are minimal.

FOOTED JP

CLOSE COUPLED PUMP

Features:

- Class F Insulation, Class B Rise At Service Factor
- Regreasable Bearings 180 Frame & Up, Lifting Provisions 210 Frame & Up
- Rolled Steel Frame 140-320
- Double Shielded Bearings
- Aluminum End Shields 140-250, Cast Iron End Shields 280-320
- 40°C Ambient, NEMA®† Design B Performance On 60 Hertz Sine Wave Power
- JP Shaft For Packing Seal
- Premasked Mylar Nameplate (with CE Mark)
- Oversized Ball Bearings w/Locked Shaft End Construction
- Full 50 & 60 Hertz Operating Data On Nameplate (03)
- F1 Assembly Position

HP	RPM	VOLTS	FRAME	CATALOG NUMBER	DS SYM	SF	"C" DIM. (INCHES)	SHIP WGT	FULL LOAD EFF.	FULL LOAD AMPS	NOTES
1	1800	208-230/460	143JP	DJ1E2DP	DS-3FPO	1.15	18.5	30	82.5	3.1-3.0/1.5	16
1-1/2	3600	208-230/460	143JP	DJ32E1DP	DS-3FPO	1.15	18.5	30	82.5	4.3-4/2	16
	1800	208-230/460	145JP	DJ32E2DP	DS-3FPO	1.15	18.5	35	84.0	4.5-4.4/2.2	16
2	3600	208-230/460	145JP	DJ2E1DP	DS-3FPO	1.15	18.5	35	84.0	5.6-5.1/2.5	16
	1800	208-230/460	145JP	DJ2E2DP	DS-3FPO	1.15	18.5	35	84.0	6.0/5.9/3	16
3	3600	208-230/460	145JP	DJ3E1DP	DS-3FPO	1.15	18.5	40	84.0	8.3-7.5/3.7	16
	1800	208-230/460	182JP	DJ3E2DP	DS-3FPO	1.15	20.5	50	86.5	8.6-8.4/4.2	16
5	3600	208-230/460	182JP	DJ5E1DP	DS-3FPO	1.15	20.5	70	85.5	14.0-12.7/6.4	16
	1800	208-230/460	184JP	DJ5E2DP	DS-3FPO	1.15	20.5	75	87.5	14.0-12.7/6.4	16
7-1/2	3600	208-230/460	184JP	DJ7E1DP	DS-3FPO	1.15	20.5	75	87.5	20.4-18.1/9.1	16
	1800	208-230/460	213JP	DJ7E2DP	DS-3FPO	1.15	21.6	106	88.5	21-19.2/9.6	16
10	3600	208-230/460	213JP	DJ10E1DP	DS-3FPO	1.00	21.6	110	88.5	27.5-25.3/12.6	16
	1800	208-230/460	215JP	DJ10E2DP	DS-3FPO	1.15	23.1	100	89.5	27.2-24.6/12.3	16
15	3600	208-230/460	215JP	DJ15E1DP	DS-3FPO	1.15	23.1	140	89.5	41-36/18.1	16
	1800	208-230/460	254JP	DJ15E2DP	DS-3FPO	1.15	27.4	140	91.0	40-38/19	16
20	3600	208-230/460	254JP	DJ20E1DP	DS-3FPO	1.15	27.4	195	90.2	54-47/23.6	16
	3600	575	254JP	DJ20E1GP	DS-3FPO	1.15	27.4	195	90.2	18.9	
	1800	208-230/460	256JP	DJ20E2DP	DS-3FPO	1.15	28.1	195	91.0	55-50/24.8	16
25	3600	208-230/460	256JP	DJ25E1DP	DS-3FPO	1.15	28.1	210	91.0	66-58/29	16
	1800	208-230/460	284JP	DJ25E2DP	DS-3FPO	1.15	28.6	210	92.4	66-60/30	16
	1800	575	284JP	DJ25E2GP	DS-3FPO	1.15	28.6	210	91.7	24.4	
30	3600	208-230/460	284JP	DJ30E1DP	DS-3FPO	1.15	28.6	230	91.0	80-70/35	16
	1800	208-230/460	286JP	DJ30E2DP	DS-3FPO	1.15	28.6	230	92.4	78-71/35	16
40	3600	208-230/460	286JP	DJ40E1DP	DS-3FPO	1.15	28.6	300	91.7	103-90/45	16
	3600	575	286JP	DJ40E1GP	DS-3FPO	1.15	28.6	320	91.7	36.0	
	1800	208-230/460	324JP	DJ40E2DP	DS-3FPO	1.15	30.4	412	93.6	102-91/46	17
50	3600	230/460	324JP	DJ50E1EP	DS-3FPO	1.15	30.4	420	92.4	116/58	17
	1800	230/460	326JP	DJ50E2EP	DS-3FPO	1.15	30.4	427	93.6	114/57	17
60	3600	230/460	326JP	DJ60E1EP	DS-3FPO	1.15	30.4	460	93.0	136/68	17

Note 03: 60/50 Hz rated with no derate on HP; 230/460 volt 60 Hz ratings operate on 190/380 volt 50 Hz, 460V 60 Hz ratings operate on 380V 50 Hz; Full 60 & 50 Hz data on Nameplate

Note 16: Motors marked 208-230/460 volts may not meet all NEMA (MG-1) performance standards when operated at 208 volts

Note 17: Twelve leads for across-the-line or wye-delta start on either voltage, part winding start on lower voltage

SINGLE PHASE

ODP

APPLICATIONS: Designed for the specific requirements of centrifugal pumps where pump impeller is mounted directly on the motor shaft. Used where dirt and moisture are minimal.

FOOTED JM & JP SHAFT

CLOSE COUPLED PUMP

- Class F Insulation
- F1 Assembly Position
- Rolled Steel Frame
- Shaft Slinger On Pulley End
- Oversized Ball Bearings w/Locked Shaft End Construction
- Lifting Provisions 180 Frame & Up
- Reversible
- JM Shaft For Mechanical Seal;
JP Shaft For Packing Seal

JM Shaft - Footed

HP	RPM	VOLTS	FRAME	CATALOG NUMBER	DS SYM	SF	"C" DIM. (INCHES)	SHIP WGT	FULL LOAD AMPS	NOTES
1	1800	115/208-230	143JM	EJM104B	DS-3PO	1.15	13.8	32	14.2/7.2-7.1	25
1-1/2	1800	115/208-230	145JM	EJM154B	DS-3PO	1.15	13.8	34	16.0/8.3-8.0	18,25
2	3600	115/208-230	145JM	EJM202B	DS-3PO	1.15	14.6	35	19.6/10.7-9.8	18,25
3	1800	115/230	182JM	DJ2C2P18M	DS-3PO	1.15	17.5	70	23.2/11.6	18
	3600	115/230	182JM	DJ3C1P18M	DS-3PO	1.15	19.6	81	16.0/32.0	18
	3600	208-230	182JM	EJM302B	DS-3PO	1.15	15.3	40	14.0-13.2	18,25
5	1800	115/230	184JM	DJ3C2P18M	DS-3PO	1.15	17.5	66	38.0/19.0	18
	3600	208-230	184JM	EJM502B	DS-3PO	1.15	16.3	45	24.0-23.7	18,25
	3600	230	184JM	DJ5C1K18M	DS-3PO	1.15	19.6	82	19.6	18
7-1/2	1800	230	184JM	DJ5C2K18M	DS-3PO	1.15	19.6	86	22.0	18
	1800	230	213JM	DJ5C2K21M	DS-3PO	1.15	20.5	105	22.0	25
	3600	230	213JM	DJ7C1K21M	DS-3PO	1.15	20.5	141	30.4	25
10	1800	230	215JM	DJ7C2K21M	DS-3PO	1.15	22.0	150	35.6	25
	3600	230	215JM	DJ10C1K21M	DS-3PO	1.15	22.0	173	40	25
	1800	230	215JM	DJ10C2K21M	DS-3PO	1.15	22.0	173	42	25

JP Shaft - Footed

HP	RPM	VOLTS	FRAME	CATALOG NUMBER	DS SYM	SF	"C" DIM. (INCHES)	SHIP WGT	FULL LOAD AMPS	NOTES
2	1800	115/230	182JP	DJ2C2P18P	DS-3PO	1.15	20.6	70	23.2/11.6	18
3	3600	115/230	182JP	DJ3C1P18P	DS-3PO	1.15	22.7	81	16.0/32.0	18
5	1800	115/230	184JP	DJ3C2P18P	DS-3PO	1.15	20.6	66	38.0/19.0	25
	3600	230	184JP	DJ5C1K18P	DS-3PO	1.15	22.7	82	19.6	18
	1800	230	184JP	DJ5C2K18P	DS-3PO	1.15	22.7	86	22.0	18
7-1/2	1800	230	213JP	DJ5C2K21P	DS-3PO	1.15	24.5	105	22.0	25
	3600	230	213JP	DJ7C1K21P	DS-3PO	1.15	24.5	141	30.4	25
	1800	230	215JP	DJ7C2K21P	DS-3PO	1.15	26.0	150	35.6	25
10	3600	230	215JP	DJ10C1K21P	DS-3PO	1.15	26.0	173	40	25
	1800	230	215JP	DJ10C2K21P	DS-3PO	1.15	26.0	173	42	25

Note 18: Incorporates Run Capacitor

Note 25: Non-protected

SINGLE PHASE

TEFC

ENERGY EFFICIENT

APPLICATIONS: Designed for the specific requirements of centrifugal pumps where pump impeller is mounted directly on the motor shaft. Used where dirt and moisture are minimal.

FOOTED JM & JP SHAFT

CLOSE COUPLED PUMP

Features:

- Class F Insulation
- Shaft Slinger On Pulley End For IP54 Protection
- Extruded Aluminum Frame
- Lifting Provisions
- Reversible Rotation
- Oversized Ball Bearings w/Locked Shaft End Construction
- JM Shaft For Mechanical Seal
JP Shaft For Packaging Seal
- Removable Base
- Aluminum End Shields with Steel Bearing Inserts
- F1 Assembly Position

JM Shaft - Footed

HP	RPM	VOLTS	FRAME	CATALOG NUMBER	DS SYM	SF	"C" DIM. (INCHES)	SHIP WGT	FULL LOAD AMPS	NOTES
3	3600	115/230	184JM	UJ3C1P18M	DS-3PT	1.15	20.3	75	32.0/16.0	18, 25
	1800	115/230	184JM	UJ3C2P18M	DS-3PT	1.15	20.3	80	30.0/15.0	18, 25
5	3600	230	184JM	UJ5C1K18M	DS-3PT	1.15	20.3	90	19.6	18, 25
	1800	230	215JM	UJ5C2K21M	DS-3PT	1.15	22.3	115	23.0	18, 25
7-1/2	3600	230	215JM	UJ7C1K21M	DS-3PT	1.15	22.3	160	30.3	18, 25
	1800	230	215JM	UJ7C2K21M	DS-3PT	1.15	22.3	160	33.5	18, 25
10	3600	230	215JM	UJ10C1K21M	DS-3PT	1.15	22.3	210	40	18, 25
	1800	230	215JM	UJ10C2K21M	DS-3PT	1.15	22.3	210	43	18, 25

JP Shaft - Footed


HP	RPM	VOLTS	FRAME	CATALOG NUMBER	DS SYM	SF	"C" DIM. (INCHES)	SHIP WGT	FULL LOAD AMPS	NOTES
3	3600	115/230	184JP	UJ3C1P18P	DS-3PT	1.15	23.3	75	32.0/16.0	18, 25
	1800	115/230	184JP	UJ3C2P18P	DS-3PT	1.15	23.3	80	30.0/15.0	18, 25
5	3600	230	184JP	UJ5C1K18P	DS-3PT	1.15	23.3	90	19.6	18, 25
	1800	230	215JP	UJ5C2K21P	DS-3PT	1.15	26.2	115	23.0	18, 25
7-1/2	3600	230	215JP	UJ7C1K21P	DS-3PT	1.15	26.2	160	30.3	18, 25
	1800	230	215JP	UJ7C2K21P	DS-3PT	1.15	26.2	160	33.5	18, 25
10	3600	230	215JP	UJ10C1K21P	DS-3PT	1.15	26.2	210	40	18, 25
	1800	230	215JP	UJ10C2K21P	DS-3PT	1.15	26.2	210	43	18, 25

Note 18: Incorporates Run Capacitor

Note 25: Non-protected

5.5" DIAMETER CATALOG #	56™ CATALOG #	HP	SF	VOLTAGE	A.O. SMITH CAT. NO.	A.O. SMITH/CENTURY CAT. NO.	FRANKLIN CAT. NO.	MARATHON CAT. NO.
Square Flange - Low Service Factors - Up-Rated								
EUSQ1052		1/2	1.30	230/115	USQ1052	B856		C1243
EUSQ1072	EB852	3/4	1.25	230/115	USQ1072	B852	54002	C1244
EUSQ1102	EB853	1	1.25	230/115	USQ1102	B853	54003	C1245
EUSQ1152	EB854	1.5	1.10	230/115	USQ1152	B854	54004	C1246
EUSQ1202	EB859	2	1.10	230/115	USQ1202	B859	18254	C1247
EUSQ1252	EB840	2.5	1.04	230	USQ1252	B840	13280	C1335
Square Flange - Full Rated Service Factors								
ESQ1052	EB846	1/2	1.95	230/115	SQ1052	B846	14796	C1304
ESQ1072	EB847	3/4	1.65	230/115	SQ1072	B847	15815	C1305
ESQ1102	EB848	1	1.65	230/115	SQ1102	B848	12504	C1306
ESQ1152	EB858	1.5	1.50	230/115	SQ1152	B858	14728	C1307
ESQ1202	EB748	2	1.30	230	SQ1202	B748	10855	C1308
	EB844	3	1.15	208-230	SQ1302	B844	16362	C1449
	EB850	5	1.00	208-230		B1000		
Square Flange - High Efficiency Design - Full Service Factor - Full Rated								
EQC1052	EB845	1/2	1.90	230/115	QC1052		11357	C1446
EQC1072	EB661	3/4	1.65	230/115	QC1072		16358	C1499
EQC1102	EB841	1	1.65	230/115	QC1102		16359	C1500
Square Flange - High Efficiency Design - Low Service Factor - Up Rated								
EUQC1072		3/4	1.27	230/115	UQC1072			
EUQC1102		1	1.25	230/115	UQC1102			
EUQC1152		1.5	1.10	230/115	UQC1152			
Square Flange - Premium Energy Efficient - Full Rated Service Factors								
	EB845	1/2	1.90	208-230/115	QC1052	B845	11357	C1446
	EB661	3/4	1.65	208-230/115	QC1072	B661	16358	C1499
	EB841	1	1.67	208-230/115	QC1102	B841	16359	C1500
	EB842	1.5	1.47	208-230/115	SQ1152	B842	16360	C1307
	EB843	2	1.30	208-230	SQ1202	B843	16361	C1308
	EB844	3	1.15	208-230	SQ1302	B844	16362	C1449
	EB850	5	1.00	208-230		B1000		
Square Flange - Full Service Factors - Two Speed								
	EB980	3/4/.12	1.67	230	SQS1072R	B980	12071	C1310
	EB981	3/4/.12	1.67	115	SQL1072R	B981		C1450
	EB982	1/.16	1.65	230	SQS1102R	B982	12072	C1311
	EB983	1.5/.25	1.47	230	SQS1152R	B983	12073	C1312
	EB984	2/.33	1.30	230	SQS1202R	B984	12202	C1313
Square Flange - Premium Efficient - Full Rate - Service Factor - Two Speed								
	EB2980	3/4/.12	1.67	230		B2980		
	EB2982	1/.16	1.65	230		B2982		
	EB2983	1.5/.25	1.47	230		B2983		
	EB2984	2.0/.33	1.30	230		B2984		
Square Flange - Tristar Replacement - Full Rated								
	ET3205	1/2	1.98	208-230/115				
	ET3207	3/4	1.85	208-230/115				
	ET3210	1	1.85	208-230/115				
	ET3215	1.5	1.60	208-230/115				
	ET3220	2	1.35	208-230				
	ET3230	3	1.20	208-230				

5.5" DIAMETER CATALOG #	56™ CATALOG #	HP	SF	VOLTAGE	A.O. SMITH CAT. NO.	A.O. SMITH/ CENTURY CAT. NO.	FRANKLIN CAT. NO.	MARATHON CAT. NO.
Square Flange - Tristar Replacement - Up Rated								
	EB852	3/4	1.25	230/115		B852		RB112
	EB853	1	1.25	230/115		B853		RB113
	EB854	1.5	1.10	230/115		B854		RB114
	EB859	2	1.10	230/115		B859		RB115
	EB840	2.5	1.04	230		B840		RB116
	EB844	3	1.15	208-230				
Square Flange - Full Service Factor - Full Rated - Three Phase								
	EH491	1/2	1.90	208-230/460	Q3052	H491		K8012
	EH492	3/4	1.65	208-230/460	Q3072	H492		K8013
	EH635	1	1.65	208-230/460	Q3102	H635		K8014
	EH636	1.5	1.47	208-230/460	Q3152	H636		K8015
	EH637	2	1.30	208-230/460	Q3202	H637		K8016
	EH755	3	1.15	208-230/460	Q3302	H755		K8017
C-Flange - Threaded Shaft - Low Service Factors - Up - Rated								
EUST1072	EB227	3/4	1.00	230/115	UST1072	B227SE	54022	C1321
EUST1102	EB228	1	1.00	230/115	UST1102	B228SE	54023	C1318
EUST1152	EB229	1.5	1.00	230/115	UST1152	B229SE	54024	C1319
EUST1202	EB230	2	1.00	230/115	UST1202	B230SE	12018	C1320
EUST1252	EB231	2.5	1.00	230	UST1252	B231SE	12020	C1149
C-Flange - Keyed and Threaded - High Service Factors - Full Rated								
	EB120	1/2	1.60	230/115	SK1052	B120	13883	C1093
EST1052	EB126	1/2	1.60	230/115	ST1052	B126	18330	C1098
	EB121	3/4	1.50	230/115	SK1072	B121	14663	C1094
EST1072	EB127	3/4	1.50	230/115	ST1072	B127	15443	C1099
	EB122	1	1.40	230/115	SK1102	B122	12718	C1095
EST1102	EB128	1	1.40	230/115	ST1102	B128	14542	C1100
	EB123	1.5	1.30	230/115	SK1152	B123	52006	C1096
EST1152	EB129	1.5	1.30	230/115	ST1152	B129	52011	C1101
	EB124	2	1.20	230	SK1202	B124	52077	C1097
EST1202	EB130	2	1.20	230	ST1202	B130	52012	C1102
	EB817	3	1.15	208-230	SK1302	B817		C1439
	EB818	3	1.00	208-230	ST1302	B818		C1440
	EB819	5	1.00	208-230				


 Extreme-E® motors represent our most efficient running, highest performing line of motors.

5.5" DIAMETER CATALOG #	56™ CATALOG #	HP	SF	VOLTAGE	A.O. SMITH CAT. NO.	A.O. SMITH/ CENTURY CAT. NO.	FRANKLIN CAT. NO.	MARATHON CAT. NO.
C-Flange - High Efficiency Design - Full Service Factor - Full Rated Service Factors								
ECT1052		1/2	1.60	230/115	CT1052		52008	C1486
ECT1072		3/4	1.50	230/115	CT1072		52009	C1437
ECT1102		1	1.40	230/115	CT1102		52010	C1488
C-Flange - Keyed and Threaded Shaft - Premium Energy Efficient - Full Rated Service Factors								
	EB656	1/2	1.60	208-230/115	CK1052	B656	52003	C1485
	EB657	1/2	1.60	208-230/115	CT1052	B657	52008	C1486
	EB634	3/4	1.50	208-230/115	CK1072	B634	52004	C1436
	EB638	3/4	1.50	208-230/115	CT1072	B638	52009	C1437
	EB653	1	1.40	208-230/115	CK1102	B653	52005	C1487
	EB654	1	1.40	208-230/115	CT1102	B654	52010	C1488
	EB795	1.5	1.30	208-230/115	SK1152	B795	52006	C1096
	EB796	1.5	1.30	208-230/115	ST1152	B796	52011	C1101
	EB808	2	1.20	208-230	SK1202	B808	52077	C1097
	EB809	2	1.20	208-230	ST1202	B809	52012	C1102
	EB817	3	1.15	208-230	SK1302	B817	12109	C1439
	EB818	3	1.15	208-230	ST1302	B818	17458	C1440
	EB819	5	1.15	208-230				
	EB116	4	1.25	208-230		B116		
C-Flange - Keyed and Threaded Shaft - Full Rated Service Factors - TWO SPEED								
	EB972	3/4/.10	1.50	115		B972	17445	C1105
	EB972H	3/4/.10	1.50	230	SKS1072			
	EB973	3/4/.10	1.50	115	STL1072R	B973	13541	C1109
	EB973H	3/4/.10	1.50	230	STS1072R			C1110
	EB974	1/.12	1.40	230	SKS1102	B974	16053	C1106
	EB975	1/.12	1.40	230	STS1102R	B975	14962	C1111
	EB976	1.5/.18	1.30	230	SKS1152	B976	19078	C1107
	EB977	1.5/.18	1.30	230	STS1152R	B977	15940	C1112
	EB978	2/.25	1.30	230	SKS1202	B978	12712	C1442
	EB979	2/.25	1.30	230	STS1202R	B979	19315	C1443
	EB966	3/.38	1.15	230		B966		
C-Flange - Hayward Northstar Replacement - Threaded Shaft - Full & Up/Max Rated								
	ESN1072	3/4	1.85	208-230/115		SN1072		
	EUSN1102	1	1.40	208-230/115		USN1102		
	ESN1102	1	1.85	208-230/115		SN1102		
	EUSN1152	1.5	1.25	208-230/115		USN1152		
	ESN1152	1.5	1.60	208-230/115		SN1152		
	EUSN1202	2	1.20	208-230/115		USN1202		
	ESN1202	2	1.35	208-230		SN1202		
	EUSN1302	3	1.20	208-230		USN1302		
	ESN1302	3	1.60	208-230		SN1302		



Extreme-E® motors represent our most efficient running, highest performing line of motors.

5.5" DIAMETER CATALOG #	56™ CATALOG #	HP	SF	VOLTAGE	A.O. SMITH CAT. NO.	A.O. SMITH/CENTURY CAT. NO.	FRANKLIN CAT. NO.	MARATHON CAT. NO.
C-Flange - Keyed Shaft - Full Service Factors - Full Rated - Three Phase								
	EH281	1/2	1.60	208-230/460		H281		K8000
	EH450	3/4	1.50	208-230/460		H450		K8002
	EH513	1	1.40	208-230/460		H513		K8004
	EH616	1.5	1.30	208-230/460		H616		K8006
	EH704	2	1.20	208-230/460		H704		K8008
	EH740	3	1.15	208-230/460		H740		K8010
C-Flange - Threaded Shaft - Full Service Factors - Full Rated - Three Phase								
	EH282	1/2	1.60	208-230/460		H282		K8001
	EH451	3/4	1.50	208-230/460		H451		K8003
	EH514	1	1.40	208-230/460		H514		K8005
	EH617	1.5	1.30	208-230/460		H617		K8007
	EH705	2	1.20	208-230/460		H705		K8009
	EH741	3	1.15	208-230/460		H741		K8011
Pool Cleaner - C Face - Full Rated Service Factor								
	EB625	3/4	1.50	230/115	PL1072	B625		
	EB668	3/4	1.50	230/115		B668		
Thru Bolt - 56 Frame - Single Speed								
	TS605	3	1.00	230		B237		
	TS606	4	1.00	230		B238		
Thru Bolt - 56 Frame - TWO SPEED - Soft Start								
	TT502	1.5/.18	1.00	230		B233		
	TT503	2.0/.25	1.00	230		B234		
	TT505	3.0/.38	1.00	230		B235		
	TT506	4.0/.50	1.00	230		B236		

 Extreme-E® motors represent our most efficient running, highest performing line of motors.



5.5" DIAMETER CATALOG #	56™ CATALOG #	HP	SF	VOLTAGE	A.O. SMITH CAT. NO.	A.O. SMITH/ CENTURY CAT. NO.	FRANKLIN CAT. NO.	MARATHON CAT. NO.
Thru Bolt - 48 Frame - Single Speed								
AGL50FL1		1/2	1.00	115	CBT2052	BN23	13719	
AGL75FL1		3/4	1.00	115	CBT2072	BN24	18889	H909
AGH75FL1		3/4	1.00	230				
AGL10FL1		1	1.00	115	CBT2102	BN25	16436	H910
AGH10FL1		1	1.00	230				
AGD15FL1		1.5	1.00	230/115	TBT1152D	BN25		C1901
SPH20FLC1		2	1.00	230		BN40		
SPH20FL1		2	1.00	230		186097	17257	C1456
SPH25FL1		2.5	1.00	230				
SPH30FL1		3	1.00	230		BN41		
Thru Bolt - 48 Frame - Two Speed - Soft Start								
AGL50FL2		1/2/.06	1.00	115			18264	
AGL75FL2		3/4/.10	1.00	115	CBS2072	BN36	12562	C1902
AGL10FL2S		1.0/.12	1.00	115	CBS2102	BN37/BN38	15698/15700	C1903
AGL15FL2CS		1.5/.18	1.00	115		BN50		
SPL15FL2S		1.5/.18	1.00	115		BN60	41000	
AGH15FL2CS		1.5/.18	1.00	230		BN34	41001	C1326
SPH20FL2CS		2.0/.25	1.00	230		BN51		
SPH20FL2S		2.0/.25	1.00	230		BN61	17525	C1327
SPH25FL2S		2.5/.33	1.00	230				
SPH30FL2S		3.0/.38	1.00	230		BN62	42005	
Above Ground Pool - 48 Frame - Single Speed (Thru bolt less base)								
AGL75FL1NB		3/4	1.00	115				
AGL10FL1NB		1.0	1.00	115				
Above Ground Pool - 48 Frame - Single Speed - 50Hz - CE Certified								
AGH75FL150		3/4	1.00	220-240		BN32		
AGH10FL150		1.0	1.00	220-240		BN33		
Above Ground Pool - EZ48 Frame - Single Speed - 60Hz - 1.5 Compartment								
EZBN23		1/2	1.00	115	CBT2052	BN23/BN23SS		
EZBN24		3/4	1.00	115	CBT2072	BN24/BN24SS		
EZBN25		1.0	1.00	115	CBT2102	BN25/BN25SS		
EZBV35		1.5	1.00	115		BV35/BV35SS		
EZBN35		1.5	1.00	230/115	TBT1152D	BN35/BN35SS		
Above Ground Pool - EZ48 Frame - Two Speed - 60Hz - 1.5 Compartment								
EZBN36		3/4/.10	1.00	115	CBS2072	BN36		
EZBN37		1.0/.12	1.00	115	CBS2102	BN37		
EZBN50		1.5/.18	1.00	115	TBS1152SV1	BN50		
Above Ground Pool - Hoffinger Replacement								
AGL10FL1H1		1	1.00	115	ODB1102V1	BV91		
AGL10FL1H2		1	1.00	115	ODB1102	BV90		H911
AGL15FL1H2		SPL	1.00	115				

VARIABLE SPEED - 56 Frame - Integrated Timer - Title 20 Compliant

CATALOG #	AOS / CENTURY STOCK NO.	MOUNTING	HP	SF	VOLTAGE
Square Flange					
EVSS3	N/A	56Y	1/2 thru 3 HP	1.15	230
C-Face					
EVSJ3	N/A	56J	1/2 thru 3 HP	1.15	230
TWO SPEED WITH INTEGRATED TIMER - 56 Frame - Title 20 Compliant					
Square Flange - Two Speed with Integrated Timer - High Efficient - Full Service Factor - Full Rated					
EB2980T	N/A	56Y	3/4 / .10	1.67	230
EB2982T	N/A	56Y	1.0 / .12	1.65	230
EB2983T	N/A	56Y	1.5 / .20	1.47	230
EB2984T	N/A	56Y	2.0 / .25	1.3	230
C-Face - Two Speed with Integrated Timer - High Efficient - Full Service Factor - Full Rated					
EB2973HT	N/A	56J	3/4 / .10	1.5	230
EB2975T	N/A	56J	1.0 / .12	1.4	230
EB2977T	N/A	56J	1.5 / .20	1.3	230
EB2979T	N/A	56J	2.0 / .25	1.2	230
TWO SPEED Motor Only - 56 Frame - Title 20 Compliant					
Square Flange - Two Speed - High Efficient - Full Service Factor - Full Rated					
EB2980	B2980	56Y	3/4 / .10	1.67	230
EB2982	B2982	56Y	1.0 / .12	1.65	230
EB2983	B2983	56Y	1.5 / .20	1.47	230
EB2984	B2984	56Y	2.0 / .25	1.3	230
C-Face - Two Speed - High Efficient - Full Service Factor - Full Rated					
EB2973H		56J	3/4 / .10	1.5	230
EB2975		56J	1.0 / .12	1.4	230
EB2977		56J	1.5 / .20	1.3	230
EB2979	B2979	56J	2.0 / .25	1.2	230
Totally Enclosed Fan Cooled					
Square Flange - Totally Enclosed Fan Cooled - Premium Efficient - Full Service Factor - Full Rated					
ETE638	N/A	56J	3/4	1.50	208-230/115
ETE654	N/A	56J	1	1.40	208-230/115
ETE796	N/A	56J	1.5	1.30	208-230/115
ETE809	N/A	56J	2	1.20	208-230
C-Face - Totally Enclosed Fan Cooled - Premium Efficient - Full Service Factor - Full Rated					
ETE661	N/A	56Y	3/4	1.67	208-230/115
ETE841	N/A	56Y	1	1.65	208-230/115
ETE842	N/A	56Y	1.5	1.47	208-230/115
ETE843	N/A	56Y	2	1.30	208-230
PENTAIR EQ PUMP SERIES REPLACEMENT POOL MOTORS					
Close Coupled Pump - Premium Efficient - Full Service Factor Full Rated					
EEQK500	N/A	182JMZ	5	1.15	208-230/460
EEQK750	N/A	184JMZ	7.5	1.15	208-230/460
EEQK1000	N/A	213JMZ	10	1.15	208-230/460
EEQK1500	N/A	215JMZ	15	1.15	208-230/460
EEQ500	N/A	184JMZ	5	1.15	230
EEQ750	N/A	213JMZ	7.5	1.15	230

NOTES



I need a motor that will reduce my energy bills.



Give me a motor that I can install in a flash.



I want a motor that will fly off my shelves.

That's easy.

ECOTECH EZ™ motor/control and 2EZ™ two speed motor with integrated timer are designed with you in mind.

MAXIMUM EFFICIENCY



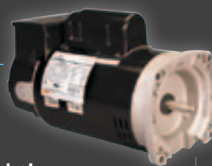
Benefits

- Programmable
- SVRS mode
- Freeze sensor
- Fits pumps up to 3.5 HP
- Complies with state energy legislation

ecotech **EZ**™

Variable Speed Motor/Control

HIGH EFFICIENCY



Benefits

- Programmable
- One piece motor and timer
- Freeze sensor
- Complies with state energy legislation

2EZ™
S P E E D

Two Speed Motor with Integrated Timer

COMPLETE SOURCE



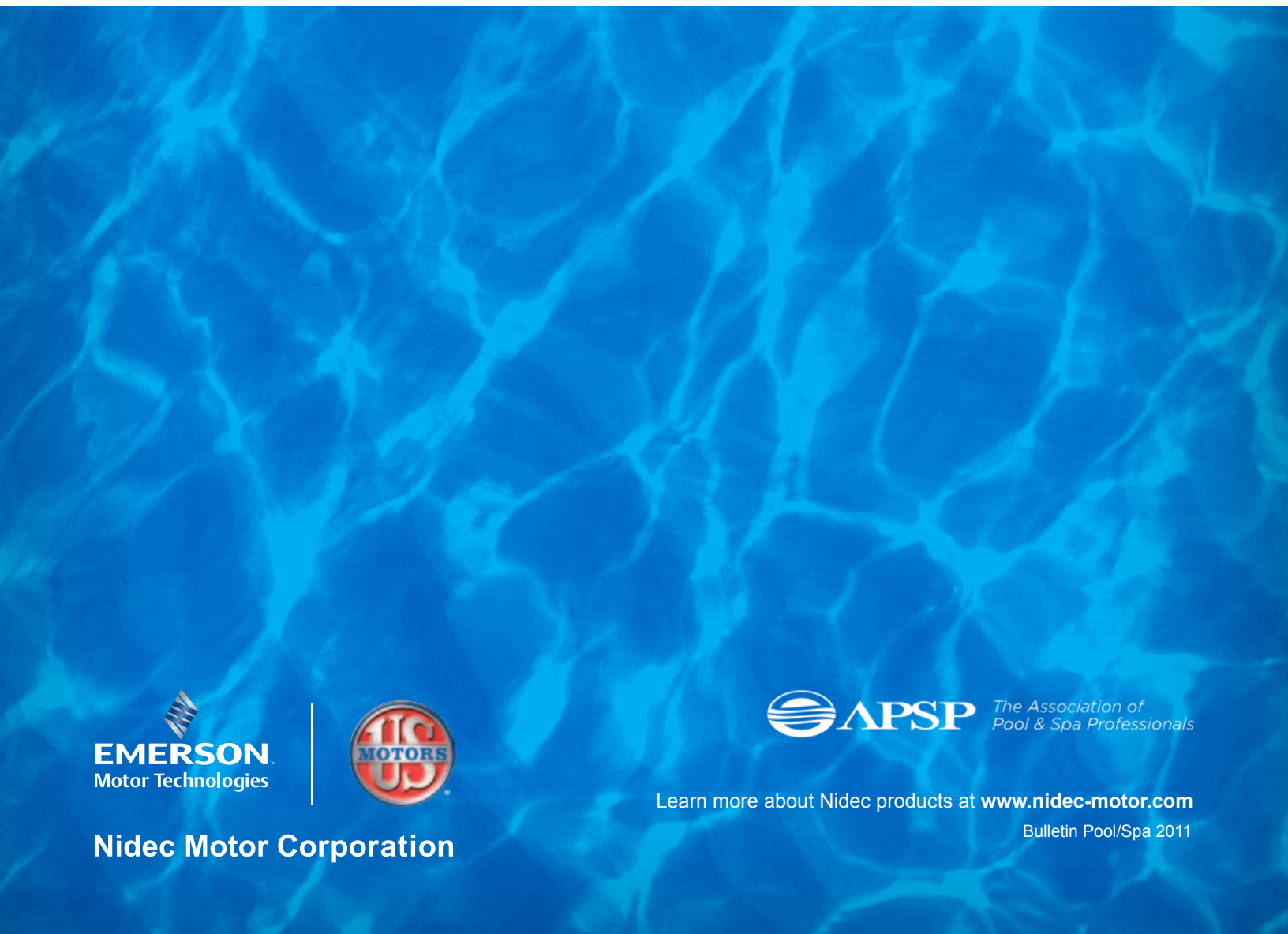
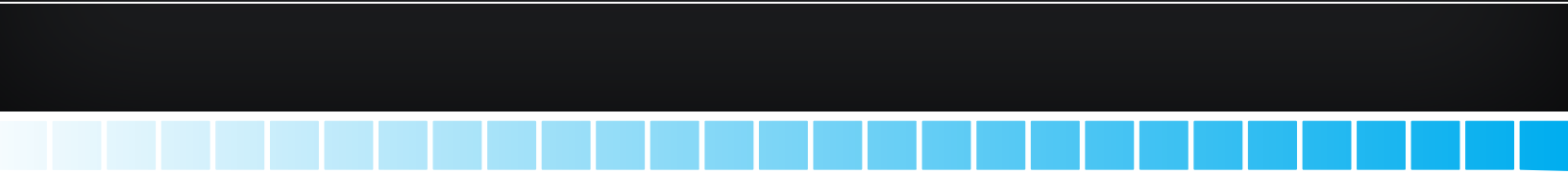
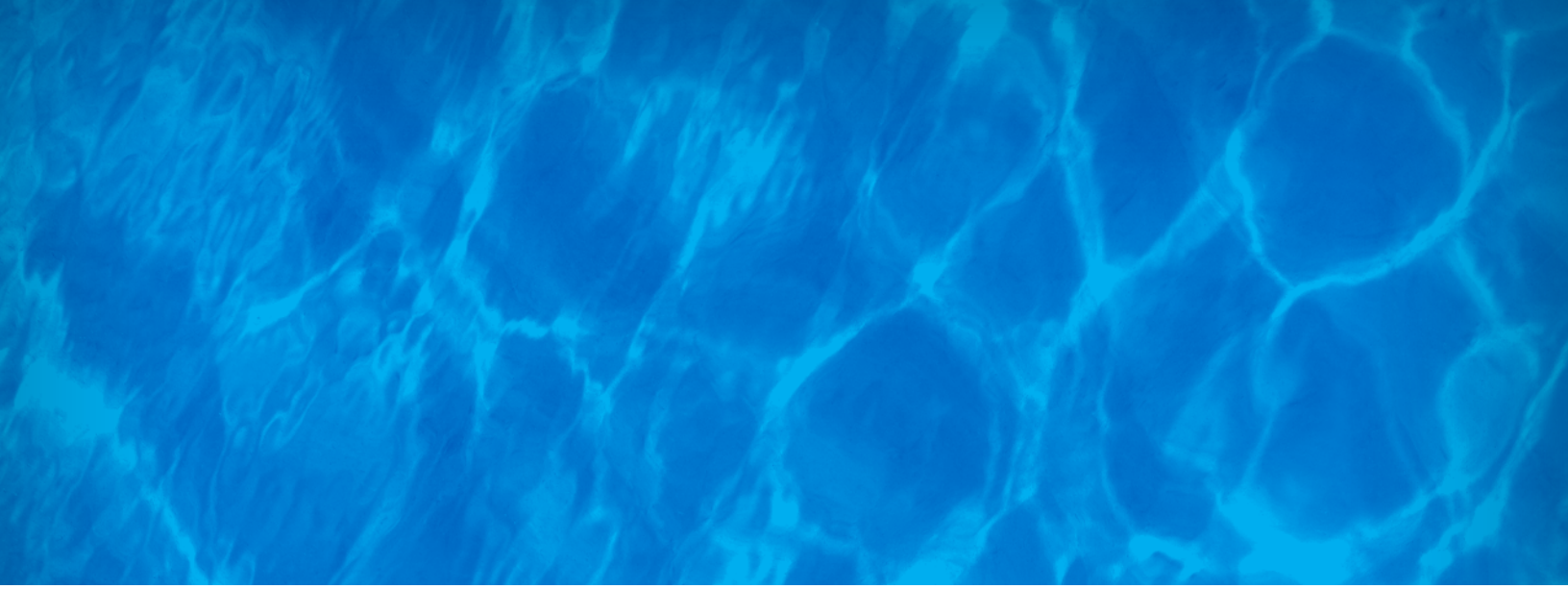
Your complete source for all pool motor needs.

www.nidec-motor.com/pool



Nidec Motor Corporation

INNOVATION MADE **EZ**™



Nidec Motor Corporation

Learn more about Nidec products at www.nidec-motor.com

Bulletin Pool/Spa 2011