

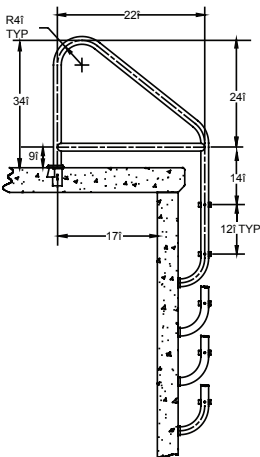
# Dade County Ladder



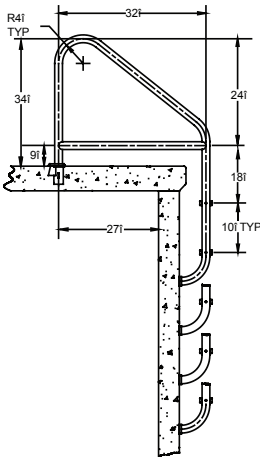
- Tubing: 1.90" OD
- Wall Thickness: .049"
- Type: 304, 316L\* stainless steel
- Bends: 4" radius
- Elite model: LTDF-103 treads, Econoline model: LTDF-101 treads
- Anchors and escutcheons sold separately

Econoline Model	Shipping Wt.	Elite Model	Shipping Wt.	Description	L	W	H
50-795E	35 lbs.	50-795S	36 lbs.	Dade County Ladder + cross brace	71"	29"	2"
50-794E	21 lbs.	50-794S	24 lbs.	Dade County Ladder	71"	29"	2"
50-791E	25 lbs.	50-791S	27 lbs.	Florida Roll Out Ladder	78"	41"	2"
50-792E-30	34 lbs.	50-792S-30	36 lbs.	Dade County/Florida Roll Out + cross brace	77.5"	42"	2.5"
		50-792S-32	37 lbs.	Florida Roll Out Ladder + cross brace	77.5"	42"	2.5"
50-792E-34	36 lbs.	50-792S-34	38 lbs.	Dade County/Florida Roll Out + cross brace	77.5"	42"	2.5"
50-792E-36	36 lbs.	50-792S-36	42 lbs.	Dade County/Florida Roll Out + cross brace	77.5"	42"	2.5"

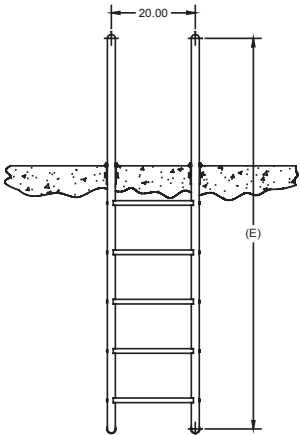
\*Marine Grade, add -MG to part number when ordering. REQUIRED for Salt Pools.  
Note: Frames extend 4 1/2" from the pool wall. Frame is secured to the pool deck with two anchor sockets on 20" centers (elite), or 19" centers (econoline). Lower end of frame is bent to meet pool wall and fitted with two white rubber bumpers.



50-795 Dade County Ladder



50-792 Florida Roll Out Ladder



See [www.srsmith.com/dimensions](http://www.srsmith.com/dimensions) for detailed dimensions