

Commercial Ladder



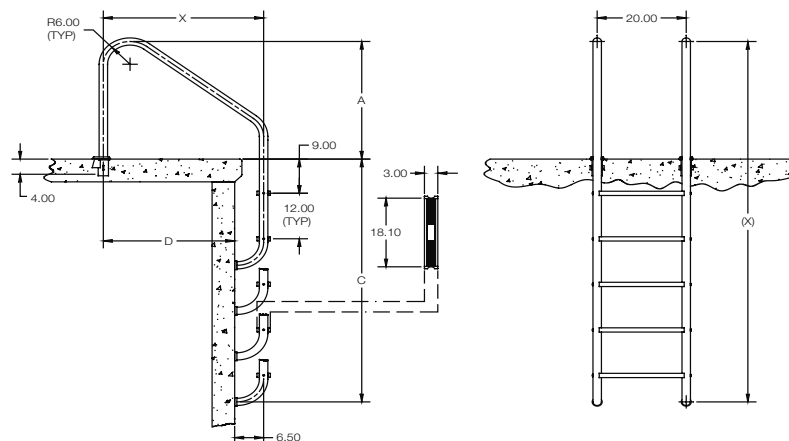
- Tubing: 1.90" OD (1.50" OD available upon request)
- Wall Thickness: .065"
- Type: 304, 316L* stainless steel
- Bends: 6" radius
- Stainless steel, LTDF-103 treads
- Anchors and escutcheons sold separately

Model No.	Description
LF-X-2A	2-Step Ladder
LF-X-3B	3-Step Ladder
LF-X-4C	4-Step Ladder
LF-X-5D	5-Step Ladder
LFB-X-2A	2-Step Ladder with cross brace
LFB-X-3B	3-Step Ladder with cross brace
LFB-X-4C	4-Step Ladder with cross brace
LFB-X-5D	5-Step Ladder with cross brace
LFB-36-3B-12	Special 36" crossbrace 3-step ladder w/ 12" extended length

Key to order: X=Width dimension: 24 for 24" ladder, 30 for 30" ladder, or 36 for 36" ladder
Safety step kits also available. Add a T to the end of the part number when ordering.

*Marine Grade, add -MG to part number when ordering. REQUIRED for Salt Pools.

NOTES: Frames extend 6 $\frac{1}{2}$ " from the pool wall. Frame is secured to the pool deck with two anchor sockets on 20" centers. Lower end of frame is bent to meet pool wall and fitted with two white rubber bumpers.



MODEL NUMBER	A	B	C	D	(E)
LF-24-2A, LF-24-2A-MG (Marine Grade)	26.00	24.00	28.00	17.50	54.00
LF-24-3B, LF-24-3B-MG	26.00	24.00	40.00	17.50	66.00
LF-24-4C, LF-24-4C-MG	26.00	24.00	52.00	17.50	78.00
LF-24-5D, LF-24-5D-MG	26.00	24.00	64.00	17.50	90.00
LF-30-2A, LF-30-2A-MG	26.00	30.00	28.00	23.50	54.00
LF-30-3B, LF-30-3B-MG	26.00	30.00	40.00	23.50	66.00
LF-30-4C, LF-30-4C-MG	26.00	30.00	52.00	23.50	78.00
LF-30-5D, LF-30-5D-MG	26.00	30.00	64.00	23.50	90.00
LF-36-2A, LF-36-2A-MG	31.00	36.00	28.00	29.50	59.00
LF-36-3B, LF-36-3B-MG	31.00	36.00	40.00	29.50	71.00
LF-36-4C, LF-36-4C-MG	31.00	36.00	52.00	29.50	83.00
LF-36-5D, LF-36-5D-MG	31.00	36.00	64.00	29.50	95.00