



## FEATURES:

- Durable & Long Lasting .049" wall Stainless Steel Construction
- Available in 5 Powder Coated Finishes
- Available in 3 Step Only
- Stylish & Functional Bend
- Ultra Protect Sealant Adds Protection From Surface Rust
- Full Exploded View - pg. F25

**Camelback Ladder - Available in 3 Step Only**  
Part # CL3049

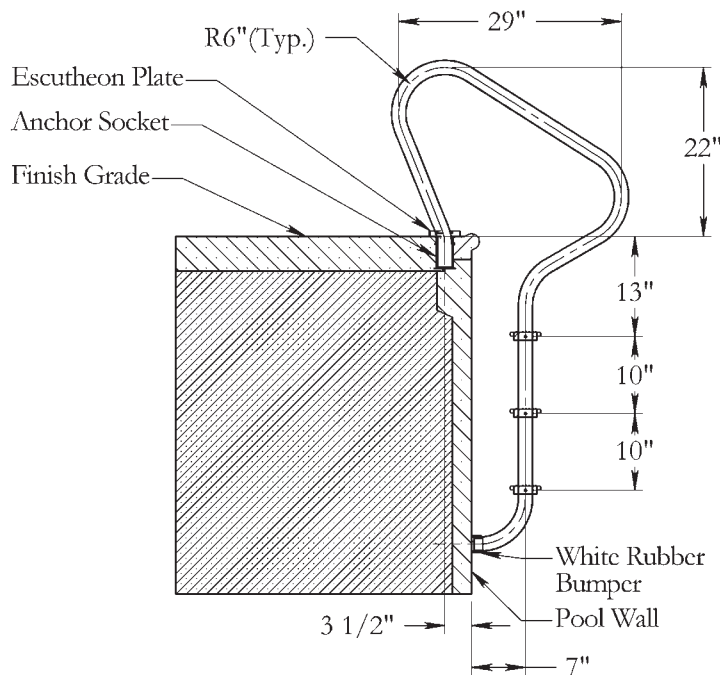
**Available w/Sure Step Tread\*, High Impact Plastic Tread\*\*, or Hartley Tread\*\*\***

\*add **S** after part # when ordering with Sure Step Tread

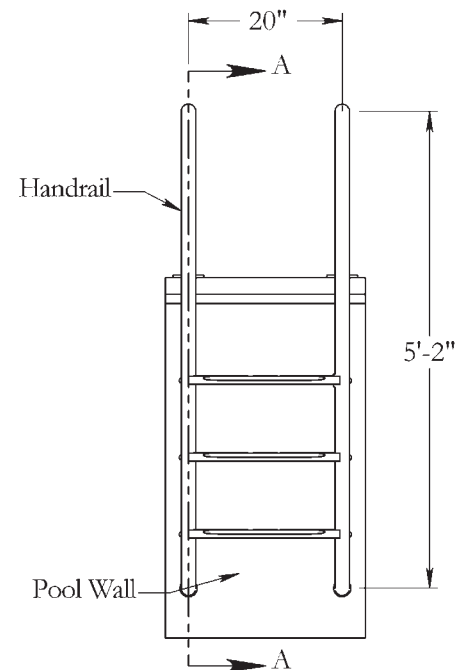
\*\*add **P** after part # when ordering with High Impact Plastic Tread

\*\*\*add **-H** after part # when ordering with Hartley Tread (powder coat only)

Custom Powder Coated Colors = White -1; Earth: -3;  
Copper Vein: -4; Hammertone Gray: -6; Light Gray: -9  
**(add custom color code behind part # when ordering)**



SECTION A-A



ELEVATION

**NOTE:** Escutcheons sold separately w/ss products; included with powder coated ladders and rails.  
All measurements on center.