

BAJA JUMP STAND:

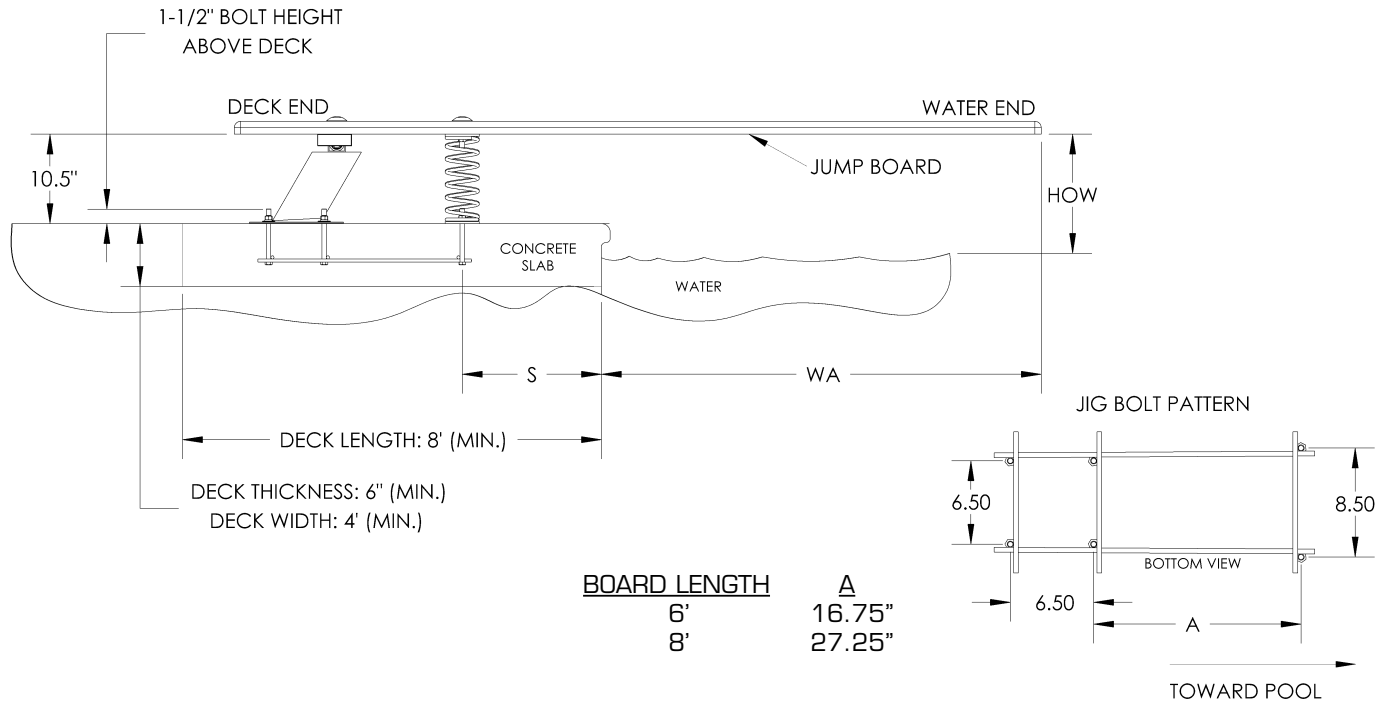


FEATURES:

- Active Base - Spring Feature is Derived from Base
- Powder Coated Steel Base
- Dual Powder Coated Coil Springs
- Available for Use With 6' & 8' Length Boards
- 4 Hole Drill Pattern
- Refer to Board Chart on Pg. 7
- Refer to Available Base Colors on Pg. 7

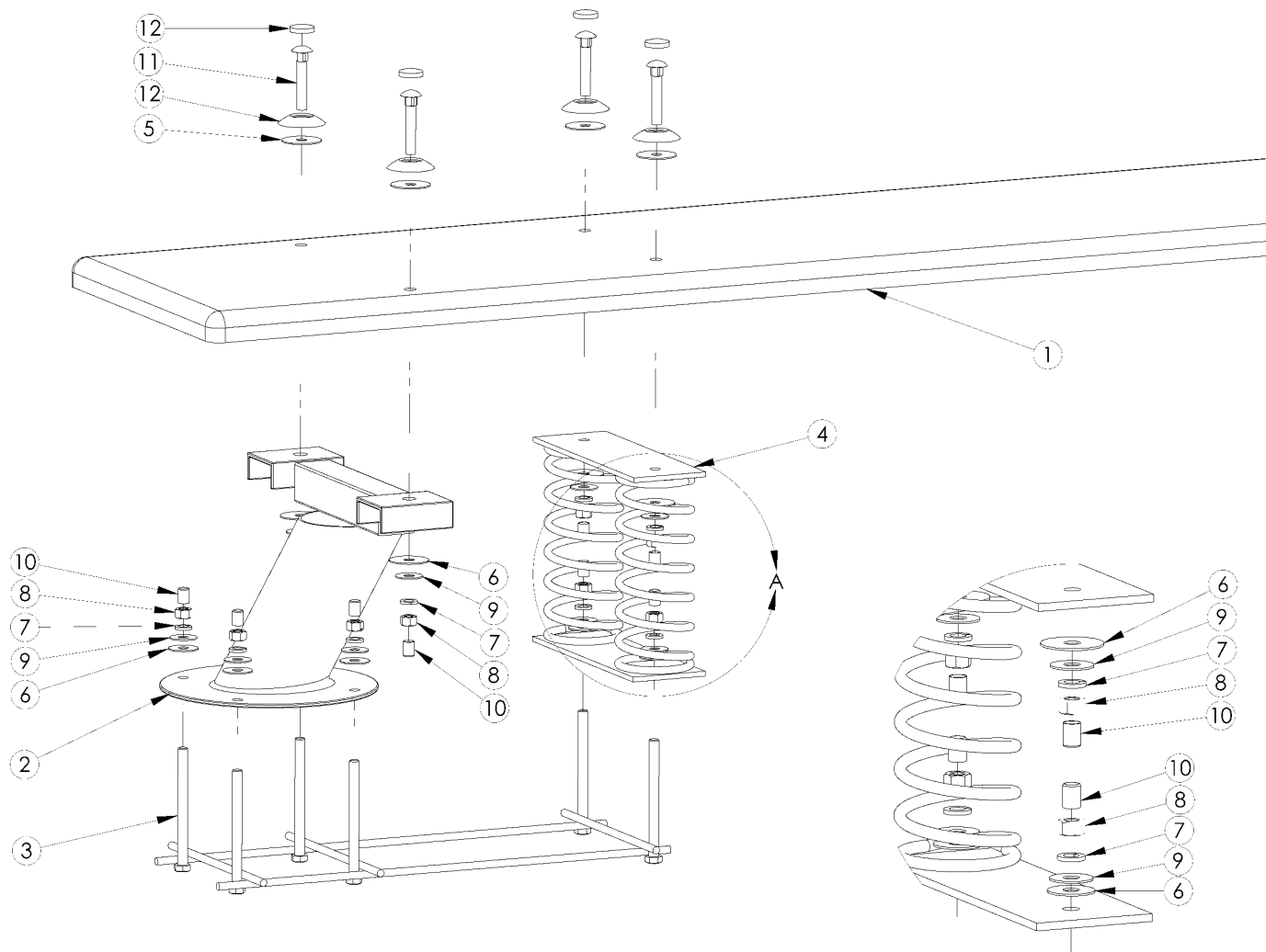
Part # BA-6C (Complete 6' kit w/stand & coil spring, jig & hardware)

Part # BA-8C (Complete 8' kit w/stand & coil spring, jig & hardware)



IMPORTANT: THESE DIMENSIONS ARE ACCURATE ONLY FOR VERTICAL POOL WALLS, TYPICALLY GUNITE CONSTRUCTION , WITH LESS THAN A 3' RADIUS TO THE POOL FLOOR. DUE TO THE VARYING SIZES OF OTHER POOLS, TYPICALLY VINYL LINER CONSTRUCTION . PLEASE CONTACT CUSTOMER SERVICE FOR PROPER JIG PLACEMENT. 1-800-737-5386	BAJA PART #	NOMINAL BOARD LENGTH	ANSI/NSPI-5 POOL TYPE	DISTANCE FROM WATER'S EDGE TO FORWARD JIG BOLT (S)	DISTANCE FROM END OF BOARD TO FORWARD JIG BOLT	MIN. OVERHANG PLUS OR MINUS 3" (WA)	MAX HEIGHT OF BOARD ABOVE WATER (HOW)
	BA-6C	6'	I	25"	43"	18"	20"
BA-6C	6'	II	25"	43"	18"	20"	
BA-6C	6'	III	19"	43"	24"	26"	
BA-6C	6'	IV	13"	43"	30"	30"	
BA-6C	6'	V	7"	43"	36"	40"	
BA-8C	8'	I	Cannot put 8' Jump Board on Type I pool				
BA-8C	8'	II	Cannot put 8' Jump Board on Type II pool				
BA-8C	8'	III	32"	63.75"	24"	26"	
BA-8C	8'	IV	26"	63.75"	30"	30"	
BA-8C	8'	V	20"	63.75"	36"	40"	

BAJA JUMP STAND (BA-6C):



DRAWING REPRESENTS THE FOLLOWING PART NUMBERS:	
	BA-6C (shown)
	BA-8C

DETAIL A

ITEM #	COMPONENT	DESCRIPTION	KITS - QTY. COUNTS					
			BA-B	BA-BK	BA-J6	BA-M	BA-S	BA-SM
1	BA6WW	6' Baja Jump Board White w/ White Top Tread & Hdw Kit						
2	BA-B	Baja Base	1					
3	BA-J6	6' Baja Jig			1			
4	BA-S	Baja Dual Coil Spring					1	
5	H-1/2 BLK WASH	1/2 x 2" Black Rubber Washer				4		
6	H-1/2 NYLON WAS	1/2" Flat Washer Nylon		4		4		2
7	H-SS 1/2 LOC WA	1/2 Lock Washer S.S.		4		4		2
8	H-SS 1/2 H NUT	1/2"- 13 Hex Finish Nut S.S.		4		4		2
9	H-SS 1/2 F WAS	1/2 USS Flat Washer S.S.		4		4		2
10	H-1-1/2 WHT CAP	.750 x 1-1/2 White UV Nut Cap		4		4		2
11	H-SS 3 C BOLT	1/2-13 x 3" Carriage Bolt S.S.				4		
12	H-WHT WAS/CAP	I.F. White Washer Cap				4		

* not pictured

NOTES:

BA6WW diving board shown in exploded view for illustration purposes. Must be purchased separately.