

T7™ DIVING SYSTEM:



Part # T7 DB (7' T7 Diving Board)

Part # T7-NBASE (T7 Base & Jig)

Part # T7-NSPRING (T7 Springs)

See page 117 for paver jig info.

NOTE: Available as Complete Kits

Compatible with Epoxy Mounting Kit Part # EPX-5



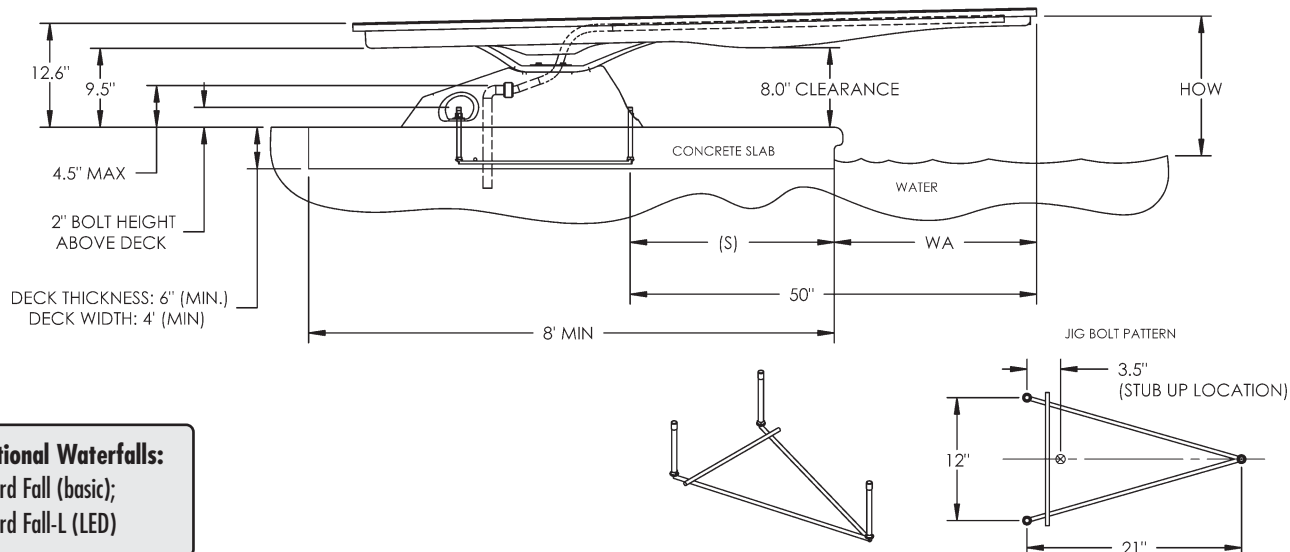
FEATURES:

- Unique 7' Diving Board Can Be Installed on Type I – Type V Pools
- Durable & Long Lasting Acrylic & Fiberglass Construction with Advanced Composite Springs
- Advanced Composite Materials
- Board Fall Compatible Base
- Weight Limit = 300 lbs.
- Variety of Earth Tones & Granite Colors Available
- Suitable for Use With Salt Systems
- *Matching Products:* The T7 Diving System™, Pool/Spa Table™, Pool/Spa Seat™, and Tanning Ledge Tables™ are designed to match the Landscape Slide products perfectly for a complete designer pool look.

T7 COLORS AVAILABLE:

Tan: -51; Gray: -52; Summit Gray: -53; Mont Blanc: -54; Pebble: -55; Fashion Gray: -56; Cappuccino: -57; Autumn Sun: -58; Safari Sunrise -59; and Starry Night: -60

(add custom color code behind board/base part #)



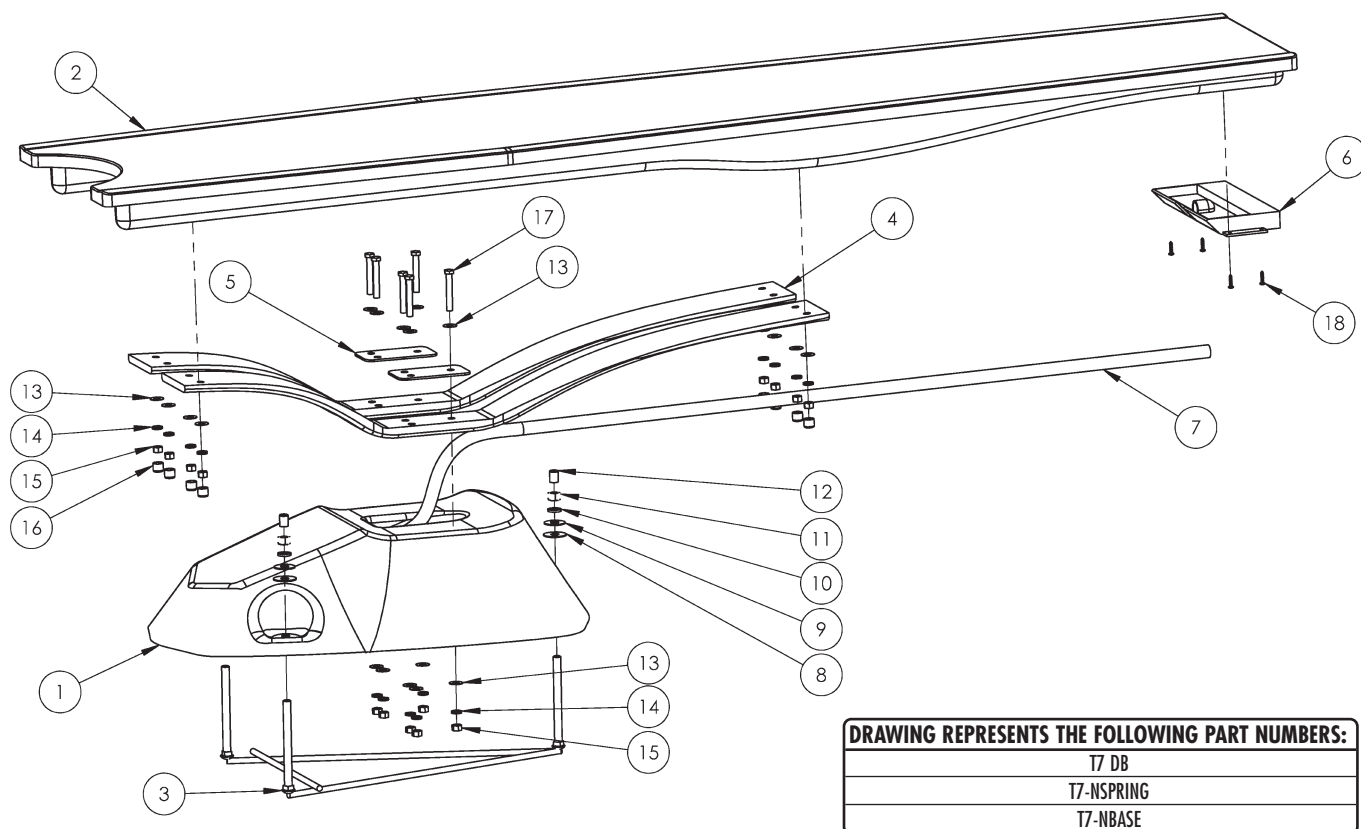
Optional Waterfalls:

Board Fall (basic);
Board Fall-L (LED)

T7 DIVE STAND	NOMINAL BOARD LENGTH	ANSI/ POOL TYPE	DISTANCE FROM WATER'S EDGE TO FORWARD JIG BOLT (S) *	DISTANCE FROM WATER END OF BOARD TO FORWARD JIG BOLT	MIN. OVERHANG POINT A TO POINT W +/- 3" **	MAX HEIGHT OF BOARD OVER WATER (HOW)
ONLY T7 DIVING BOARD CAN BE UTILIZED ON T7 DIVE STAND	7' T7 ONLY	I	31"	50"	18"	20"
	7' T7 ONLY	II	31"	50"	18"	20'
	7' T7 ONLY	III	25"	50"	24"	26"
	7' T7 ONLY	IV	19"	50"	30"	30"
	7' T7 ONLY	V	13"	50"	36"	40"
MUST BE INSTALLED ON TYPE I POOL OR GREATER						

IMPORTANT: THESE DIMENSIONS ARE ACCURATE ONLY FOR VERTICAL POOL WALLS, **TYPICALLY GUNITE CONSTRUCTION**, WITH LESS THAN A 3' RADIUS TO THE POOL FLOOR. DUE TO THE VARYING SIZES OF OTHER POOLS, **TYPICALLY VINYL LINER CONSTRUCTION**, PLEASE CONTACT CUSTOMER SERVICE FOR PROPER JIG PLACEMENT. **1-800-737-5386**

T7 DIVING SYSTEM (T7 DB, T7-NBASE, T7-NSPRING):



DRAWING REPRESENTS THE FOLLOWING PART NUMBERS:

T7 DB

T7-NSPRING

T7-NBASE

ITEM #	COMPONENT	DESCRIPTION	KITS – QTY. COUNTS			
			T7-NBK	T7-102-SS	EDGE-SP	T-7
1*	T7-NBASE-(color code)	NO STEP T7 BASE				1
2	T7-DB-(color code)	7' T7 DIVING BOARD				1
3	T7-NJIG	3 BOLT T7 NO STEP BASE JIG				1
4	T7-NSPRING-(color)	T7 NBASE SPRINGS (pair)				1
5	SPRING PAD (factory installed)	T7 NSPRING PAD				2
6**	BOARD FALL	OPTIONAL WATERFALL ASSEMBLY				1
7**	H-1/2 SPA HOSE	1/2" PVC FLEX SPA HOSE GRAY				1
8	H-1/2 NYLON WAS	1/2" FLAT NYLON WASHER	3			
9	H-SS 1/2 F WAS	1/2" SS FLAT WASHER	3			
10	H-SS 1/2 LOC WA	1/2" SS LOCK WASHER	3			
11	H-SS 1/2 H NUT	1/2" SS HEX NUT	3			
12	H-1-1/2 WHT CAP	.750 X 1-1/2 WHITE UV NUT CAP	3			
13	H-SS 3/8 FLT WA	3/8" SS FLAT WASHER		8	12	
14	H-SS 3/8 LOC WA	3/8" SS LOCK WASHER		8	6	
15	H-SS 3/8 F NUT	3/8" SS FINISH HEX NUT		8		
16	H-.562 X .390 CAP	.553 X 1/2" GRAY PROTECTIVE CAP		8		
17	H-SS 3/8 X 2-1/2	3/8"-16 X 2-1/2" HEX HEAD BOLT SS			6	
18**	H-SS #8 X 3/4	SS 8 X 3/4" PAN HEAD PHILLIPS SCREW				4
19*	H-SS 3/8 NYLON	3/8" NYLON INSERT LOCK NUT			6	
20*	H-ANTI-SEIZE	PACKET OF ANTI SEIZE LUBRICANT (NOT SHOWN)		1	1	

* not pictured

** optional waterfall feature

NOTES:

Part #T7-NBASE comes WITH jig (#3).

The T7 diving board, base, and springs must be used together and cannot be used separately in any other configuration.

Check your local electrical code requirements for bonding requirements.