



# My-S30<sup>L</sup> *Syncrylic™*



Exclusive Suite  
Package Included!



- Seats up to 6 Adults
- 78" x 78" x 36"
- 30 MassageMax Jets
- Crystal Springs LED Water Fountain
- 3 MyComfort Pillows
- Carefree Cabinet
- Durafab Insulating Cover
- PureLife 100% Water Filtration
- Interior LED Light
- 2 LED Air Controls
- MyDigital Control Pad
- LED Exterior Corner Lighting
- Full Foam Insulation

Dry Weight	405 lbs/ 474 lbs with Suite
Water Capacity	305 Gallons
ProForce Pump	3HPR*, 2-Speed
Convertible Heater	1kw/4kw
Electrical	120V/240V
GFCI Cord with Plug	12'

\*High Performance Rated Pumps

Colors and specifications may vary or appear differently than actual product and are subject to change without notice.  
Dimensions may vary +/-5"

## Body & Trim Colors with Black Side Panels

Suite Steps in black to match the side panels plus matching black Durafab Cover

<b>Glacier Sparkle Body</b>	<b>Night Sparkle Body</b>	<b>Tuscan Sparkle Body</b>	<b>Mystic Sparkle Body</b>
Pillows	Pillows	Pillows	Pillows
Jets	Jets	Jets	Jets
Black	Black	Coffee	Black
Gray	Gray	Espresso	Gray

# My-S30<sup>L</sup>

Syncrylic™

**MyLife**<sup>™</sup>  
HOT TUBS

## ReflexMax Lounge<sup>12</sup>:

**Complete back, feet and calves**

12 Precise jet placements provide massage action across the entire back, to each calf, and the bottom of your feet

## 2-LED Air Controls

Added illumination is provided by the LED inside the air control

## Rest Station

With a low jet count, this seat is designed to provide a rest station for a cool down period

## MultiMax<sup>6</sup> Station

6 DirectionalMax jets provide 2 types of soft tissue massage across the shoulders, down the back and into the lumbar

## Guest Center<sup>2</sup>

With 2 jets, this seat sits slightly higher and provides added room for an individual or space for an extra guest

## Lounge Hand Grip

Convenient built-in hand grip helps when lowering and rising from the lounge

## PureLife 100%

### Water Filtration

Water is drawn into a side entry filtration system for superior water quality and ease of maintenance

## Inside Step

Inside step for entering and exiting your hot tub

## Interior LED Light

Up to 9 pattern and color options available to enhance ambiance

## LED Water Fountain

With Adjustable Flow

## MyDigital Control Pad

## Rest Station

Single jet seat designed to provide a rest station for a cool down period

## MassageMax Jets

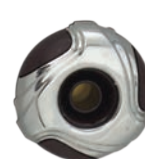
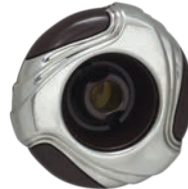
30 Adjustaflow DirectionalMax<sup>1</sup>, DirectionalMax<sup>2</sup> and DirectMiniMax jets configured differently in each seat and sized to provide the widest variety of therapy and comfort for your hot tub experience. Including these powerful jet styles:

## DirectionalMax<sup>1</sup>

Adjust the direction and flow of each Jet

## DirectionalMax<sup>2</sup>

Adjust the direction and flow of each Jet



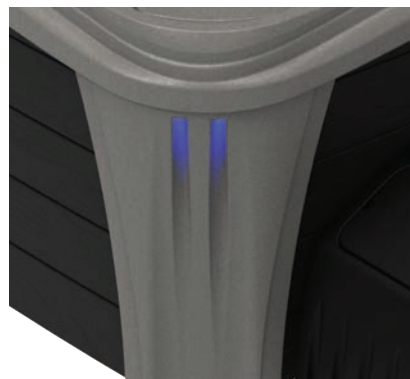
## Includes Exclusive Suite Package

Suite Steps with slip resistant step treads, sturdy integrated handrail, side planters/coolers, inside step storage plus convenient quality cover lifter.



## LED Safety and Style

Corner LED Luminations adds visibility and style around your tub



## Durafab

### Insulating Cover

Weather and fade resistant lockable energy saving cover

