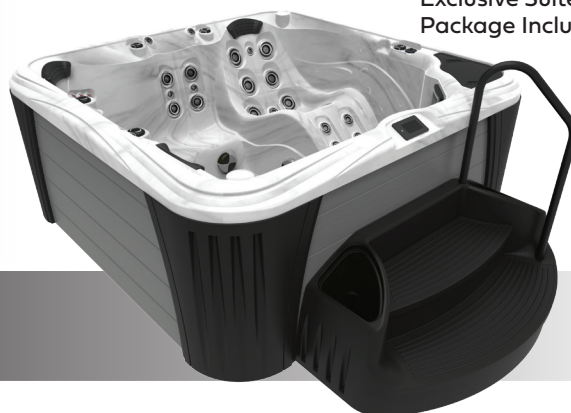


Exclusive Suite  
Package Included!



# My-F50<sup>L</sup> ACRYLIC



- Seats up to 5 Adults  
84" x 84" x 36"
- 50 MassageMax<sup>2</sup> Jets
- 2 Crystal Springs LED Fountains
- 3 MyComfort Pillows
- Carefree Cabinet
- Thru Wall Drain System
- Durafab Insulating Cover
- CleanSweep Action
- PureLife 100% ISO-Water Filtration
- LED Footwell Light
- 4 LED Air Controls
- MyTouch Control Pad
- Interior Perimeter Lighting
- LED Exterior Corner Lighting
- MyAudio-Bluetooth Speakers (2)

- InFuse Aromatherapy
- Green Guard Insulation
- Dry Weight 765 lbs
- Water Capacity 369 Gallons
- ProForce<sup>2</sup> Pumps/HPR\* 1 - 5.0 HPR, 2 SPD  
1 - 5.0 HPR, 2 SPD

- Heater 4kw
- Electrical 240V
- Water Care & Management UV/PureZone Ozone

## Body & Trim Color Options

Suite Steps in black to match the corners plus matching black Durafab Cover

\*High Performance Rated Pumps

Colors and specifications may vary or appear differently than actual product and are subject to change without notice. Dimensions may vary +/-5"

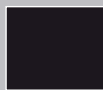


**Tuscan Sun Body**

Cabinet Corners



Coffee

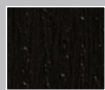


Black

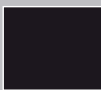


**Mayan Copper Body**

Cabinet Corners



Black

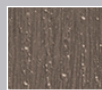


Black

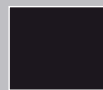


**Smoky Mountain Body**

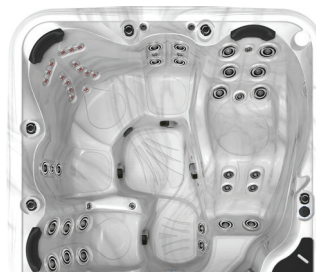
Cabinet Corners



Fieldstone



Black

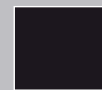


**Glacier Mountain Body**

Cabinet Corners



Gray



Black



# My-F50<sup>L</sup>

## ACRYLIC

**MyLife™**  
HOT TUBS

### AirMax<sup>15</sup> Center

15 AirMax jets provide 3 types of soft tissue massage across the shoulders, down the back and into the lumbar

### CleanSweep Action

Downward sweeper action across a contoured footwell helps to lift small elements toward the filtration corner for added water purification

### Rest Station

With 3 adjustable jets, this seat is designed to provide a rest station for a cool down period

### ReflexMax Center: Feet, Wrists, Elbows and Back

Precise jet placement provides massage action to key reflex points while continuing to work down both sides of the spine

### MyAudio

2 Bluetooth Audio Speakers are built in



### GuestStation

Allows for closer interaction with friends

### Crystal Springs LED Fountains and Controls

Twin fountain streams and LED Controls illuminate the night



### FullMax Lounge<sup>14</sup>

14 MassageMax Jets combine for full back, feet and calf therapy

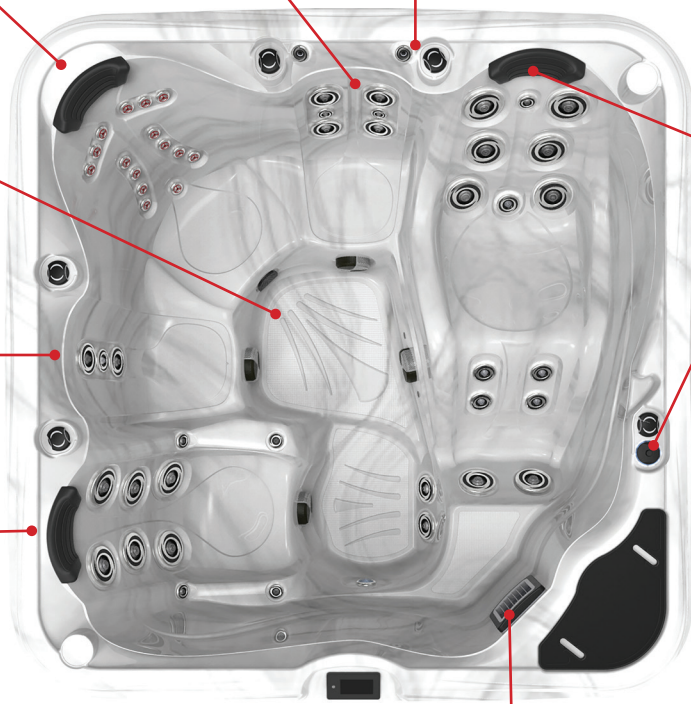
### InFuse Aromatherapy

Choose a favorite fragrance for an enhanced aromatic experience



### MyCleanWater Ozone and UV Sanitizer

UV/Ozone in your hot tub provides a water care and management system helping to neutralize contaminant and reduce chemical use



### MyTouch Control Pad

### PureLife 100% ISO-Water Filtration

A sealed debris-trapping vacuum filtration system for superior water quality and ease of maintenance



### The Suite Package

Suite Steps with slip resistant step treads, sturdy integrated handrail, side planters/coolers, inside step storage plus convenient quality cover lifter. Weather and fade resistant Durafab cover also included.



Cover lifter included

### MassageMax<sup>2</sup> Jets

50 Adjustaflow MassageMax jets configured differently in each seat and size to provide the widest variety of therapy and comfort for your hot tub experience. Including these powerful Jet styles:



**PowerMax**  
PowerMax Total Massage Jets



**LazerMax**  
Delivers a straight constant massage



**DirectionalMax**  
Adjust the direction to desired location



**AirMax Jets**  
Polynetic, Trinetic and Binetic Air action

### Back

Multiple seat back massage styles



### Wrist and Elbow

Multipoint massage therapy



### Foot

Reflexology direct to the bottom of each foot



### Comfort

Smooth seat design with MyComfort Pillows

