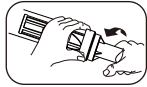


size:80*130mm

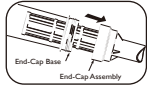


MANUAL VAC

Quick Guide for removing debris



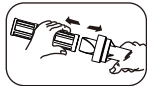
1. Rotate end-cap assembly counterclockwise.



2. Gently pull end-cap assembly out.



3. Hold the end-cap assembly and rotate filter screen counterclockwise about 1/8" or until you feel it stop.



4. Pull off filter screen and rinse out the debris from both filter screen and end-cap assembly. Make sure seal ring inside end-cap assembly is flat with no grit.



5. Line up the filter screen notches with end-cap assembly grooves. Slide filter screen into place by gently rotating clockwise 1/8" or until filter screen locks into place.



6. Rotate end-cap assembly back into body and lock tight.



WIDE-END NOZZLE



WALL MOUNT



SLIDE-ON BRUSH



DUAL-END NOZZLE

© 2017 Jacuzzi Inc. All rights reserved.

Jacuzzi® is a registered trademark of Jacuzzi Inc. and used under license agreement. All other brands, product names, company names, trade names and trademarks used are the property of their respective owners. Reproduction in whole or in part without written permission is prohibited. Dimensions are approximate.



SKU48827



Distributed by Leslie's Poolmart, Inc.
Phoenix, AZ 85016

www.jacuzzi.com