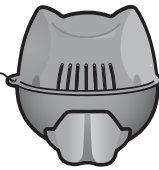




# Operation Manual



Tether to pool with enclosed cord.



Flippin' FROG<sup>®</sup> XL<sup>®</sup> sanitizing mineral pool care will help destroy bacteria to keep your pool clean with less work and up to 50% less chlorine.\*

It is super easy to use and will keep you enjoying a clean, clear swimming pool for weeks at a time.

**Here's all you do:**

## Preparing the Pool

### 1. For help in balancing follow STEPS a – e in order.

**IMPORTANT:** Always follow printed instructions on the balancing chemical packages. Add balancing chemicals in small increments one at a time with circulation running and wait 8-12 hours before testing again and adding any additional balancing chemicals.

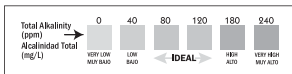
#### Water Balance Guidelines

pH:	7.2 - 7.8
Total Alkalinity:	80 - 120 ppm
Calcium Hardness:	200 - 400 ppm
Total Dissolved Solids:	<1500
Stabilizer:	20 - 80 ppm
Free Chlorine:	0.5 - 1.0 ppm

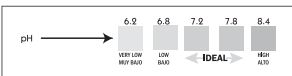
**a.** Take a water sample from the pool and dip a FROG<sup>®</sup> Test Strip into it.



**b.** Look at the **Total Alkalinity** reading first. Adjustments should be made to bring the Total Alkalinity in the **range of 80 - 120 ppm** prior to making any adjustments to pH even if it throws pH off further.



**c.** After Total Alkalinity is in range, **test for pH**. It should be **between 7.2 and 7.8**. If higher or lower, add a pH adjuster.



**d.** Then test for **Calcium Hardness**. It should be between **200 and 400 ppm**. If higher, partially drain the pool and refill with water low in calcium. If lower, add Calcium Increaser.

**e.** Lastly, test for **Stabilizer or Conditioner levels**. Add conditioner if the level is below 20 ppm. This will prevent chlorine burn off.

**2.** Shock pool to remove contaminants. Follow manufacturer's directions carefully.



\*Compared to the minimum EPA recommended chlorine level of 1.0 ppm for a stabilized swimming pool.

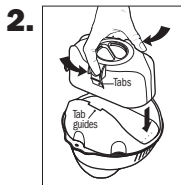
Register your Flippin' FROG<sup>®</sup> XL<sup>®</sup> at [frogproducts.com](http://frogproducts.com)



Manufactured by: King Technology, Inc.  
530 11th Ave S, Hopkins, MN 55343 U.S.A.  
952-933-6118 • Customer Service 800-222-0169  
FAX 952-933-2206 [www.frogproducts.com](http://www.frogproducts.com)

## Start-Up

**1.** Remove outer packaging from both the mineral and chlorine cartridges of the Flippin' FROG XL.



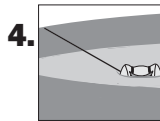
Align the chlorine cartridge with tab guides on the mineral cartridge. Push together until you hear the cartridge click into place.



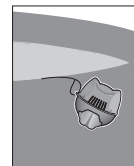
Twist the dial on the chlorine cartridge to the setting number for your pool size (see Initial Setting Chart).

Initial Setting Chart	
Gallons	Setting #
5,000	1
6,000	2
7,500	3
9,000	4
10,000	5

**NOTE:** Calculate pool gallons by multiplying **diameter x diameter x water height (feet) x 5.9** or visit our pool volume calculator at [frogproducts.com](http://frogproducts.com).

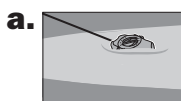


Tether it to the pool side with the cord provided, away from the skimmer or a return jet.

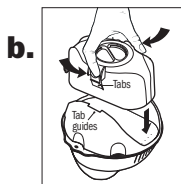


**NOTE:** This product may be removed from the pool when in use. Lift out of the water and let drain into the pool. Then hang over the outside of the pool or place on the ground or a surface that is not susceptible to bleaching from the chlorine. Remember to replace the product once exiting the pool.

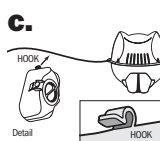
## Replacing Cartridges



When the product is almost empty, it will slowly flip over giving you notice that it's about time to replace. Do not remove the chlorine cartridge until the system has completely flipped.



When it completely flips over release the chlorine cartridge by squeezing the tabs and pull the empty cartridge out.



If the chlorine cartridge contains a small amount of chlorine after the system has flipped over, hang on the tether via the hook on the side of the cartridge until completely empty. Do not allow chlorine cartridge to sink to the bottom or pool bleaching may occur.



When completely empty, discard in trash or offer for recycling.

## Regular Pool Care



Run pump and filter at least 8 hours but ideally 24 hours per day. Clean or replace your filter cartridges weekly. Lack of circulation may cause bleaching of pool surface and improper sanitization levels.



Skim the surface of any debris and remove anything collected on the return fitting to your pump.



Regularly test water for pH, total alkalinity and chlorine levels. Adjust your pH when it rains or when adding fresh water to the pool. Maintain a 0.5 - 1.0 ppm chlorine level at all times.



Replace the chlorine cartridge when the Flippin' FROG XL completely flips over.



Shock the pool at least weekly when the pool is being used and every few days when the water temperature is 90 degrees or more to maintain water clarity. Follow label directions on the shock treatment used.

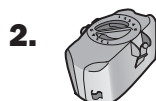


Replace the complete Flippin' FROG XL every six months or after one pool season whichever is shorter. If the pool is drained and refilled prior to six months, the Flippin' FROG XL must be replaced at that time.

## Troubleshooting

### Cloudy Water or Low Chlorine Levels

**1.** Check water balance. Ensure pH, Total Alkalinity, Calcium Hardness and Stabilizer levels are correct.



Check chlorine cartridge and replace if empty—see instructions under "Replacing Cartridges."



Make sure your Mineral Cartridge is not older than 6 months as it will be ineffective and more chlorine will be required to maintain the pool until you replace the system.



Shock the pool with a chlorine or non-chlorine shock to regain clarity.

### High Chlorine Levels



**1.** Remove Flippin' FROG XL from the pool until the chlorine level is down to 1.0 ppm.



**2.** Lower the dial setting by 1 number and replace in the pool.



**3.** Test in 24 hours. Repeat process until chlorine level stays within 0.5 to 1.0 ppm.

### Algae

- Use an algicide following manufacturer's directions carefully. This may involve more than one dose.
- Run circulation 24 hours a day and brush the sides of the pool often.
- When clarity starts to return, shock the pool.