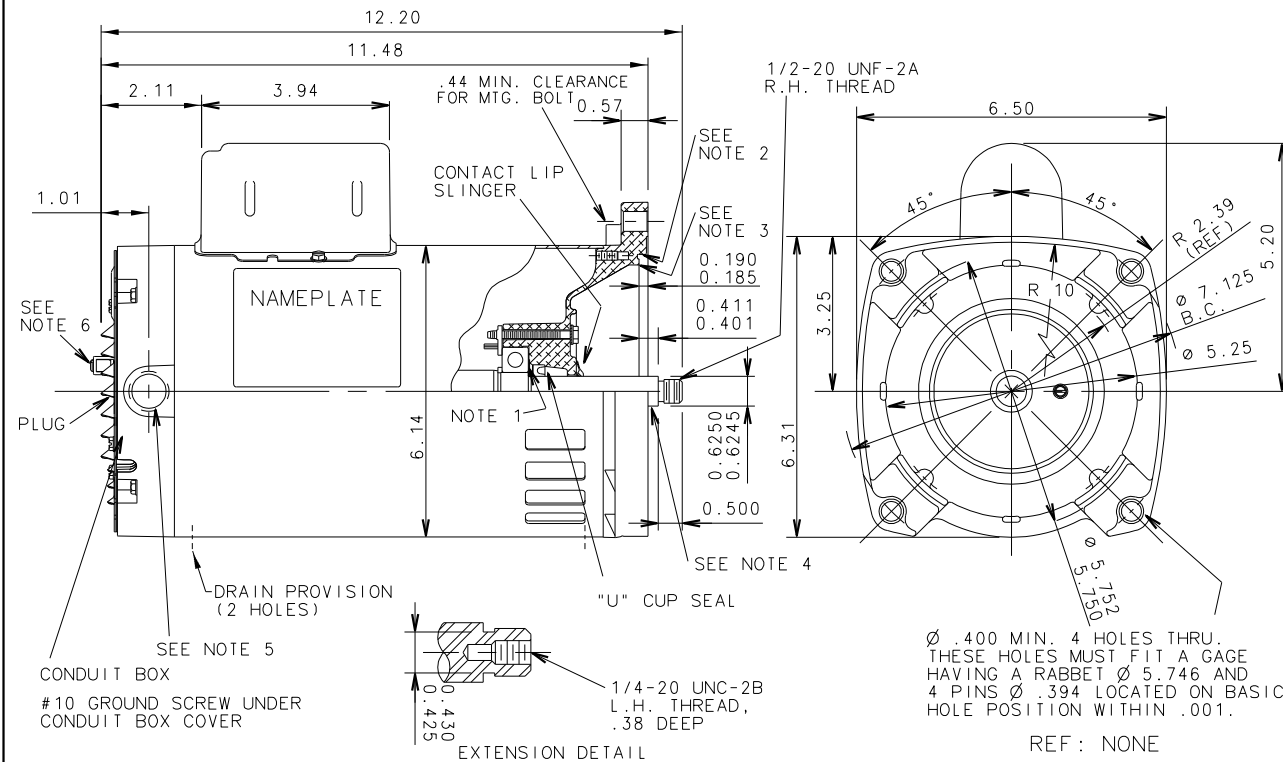


THE INFORMATION DISCLOSED HEREIN INCLUDES PROPRIETARY RIGHTS OF BLUFFTON MOTOR WORKS. NEITHER THIS DRAWING NOR THE INFORMATION DISCLOSED THEREIN SHALL BE REPRODUCED OR TRANSFERRED TO OTHER DOCUMENTS OR USED OR DISCLOSED TO OTHERS FOR MANUFACTURING PURPOSES OR FOR ANY OTHER PURPOSES, EXCEPT AS SPECIFICALLY AUTHORIZED IN WRITING BY BLUFFTON MOTOR WORKS.

1203007445

UNLESS OTHERWISE SPECIFIED DIMENSIONS WITHOUT TOLERANCES ARE REFERENCE ONLY



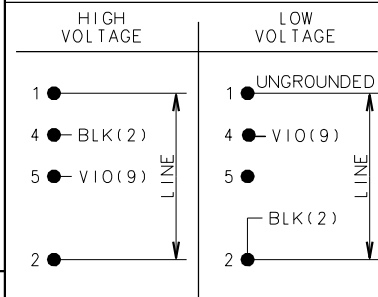
NOTES

1. SHIMS ADDED TO MEET MOUNTING FACE TO SHOULDER DIMENSION .411/.401
2. ECCENTRICITY RELATIVE TO SHAFT .004 T.I.R. MAX.
3. FACE WOBBLE RELATIVE TO SHAFT .004 T.I.R. MAX.
4. ECCENTRICITY .002 T.I.R. MAX.
5. 1/2-14 NPT TAPPED HOLE WITH 3 1/2 TO 5 THREADS FOR CONNECTION OF CONDUIT PROVIDED.
6. EXTERNAL GROUND TERMINAL IS PROVIDED FOR BONDING ALL NON-CURRENT CARRYING METAL PARTS OF THE UNIT STRUCTURAL METAL OF THE SWIMMING POOL.
7. ALL MOTORS HAVE SAFETY WARNING LABEL ON NAMEPLATE.
8. GASKETS UNDER CONDUIT COVER AND CORD PLUG.

LEADS

TERMINAL BOARD

EXTERNAL CONNECTIONS



MOTOR DATA

TYPE	CSCR	ENCLOSURE	DRIPPROOF	VIEWING LEAD END	MOTOR ROTATION	CW	
HP	2.0	BEARINGS	BALL	ASSEMBLY ROTATION	CW		
PH	1	HZ	60	PAINT	ALTO BLUE	ASSEMBLY VOLTAGE	HIGH
RPM	3450	SF	1.10	MOUNTING POSITION	HORIZONTAL	THERMALLY PROTECTED TYPE	S AUTOMATIC
VOLTS	115/230	END CAP	ASSEMBLED	WINDING AND TEST SPEC	330082		
MAX. AMPS		ENVIRONMENTAL CONDITION	WET	CUSTOMER NAME	BLMW STD		
S.F. AMPS	20.0/10.0	SHAFT MATERIAL	STAINLESS STEEL	CUSTOMER PART NO.	B1247		
FRAME	56Y			DRAWN	BKG 4-28-14		
TIME RATE	CONT	MAX. AMB.	50 °C	APPROVED			
KVA CODE	G	INS. CLASS	B	RELEASED			

BLUFFTON MOTOR WORKS
Bluffton, Indiana 46714

MODEL NUMBER

1203007445

DIST: 3-21(2)-26-31-35