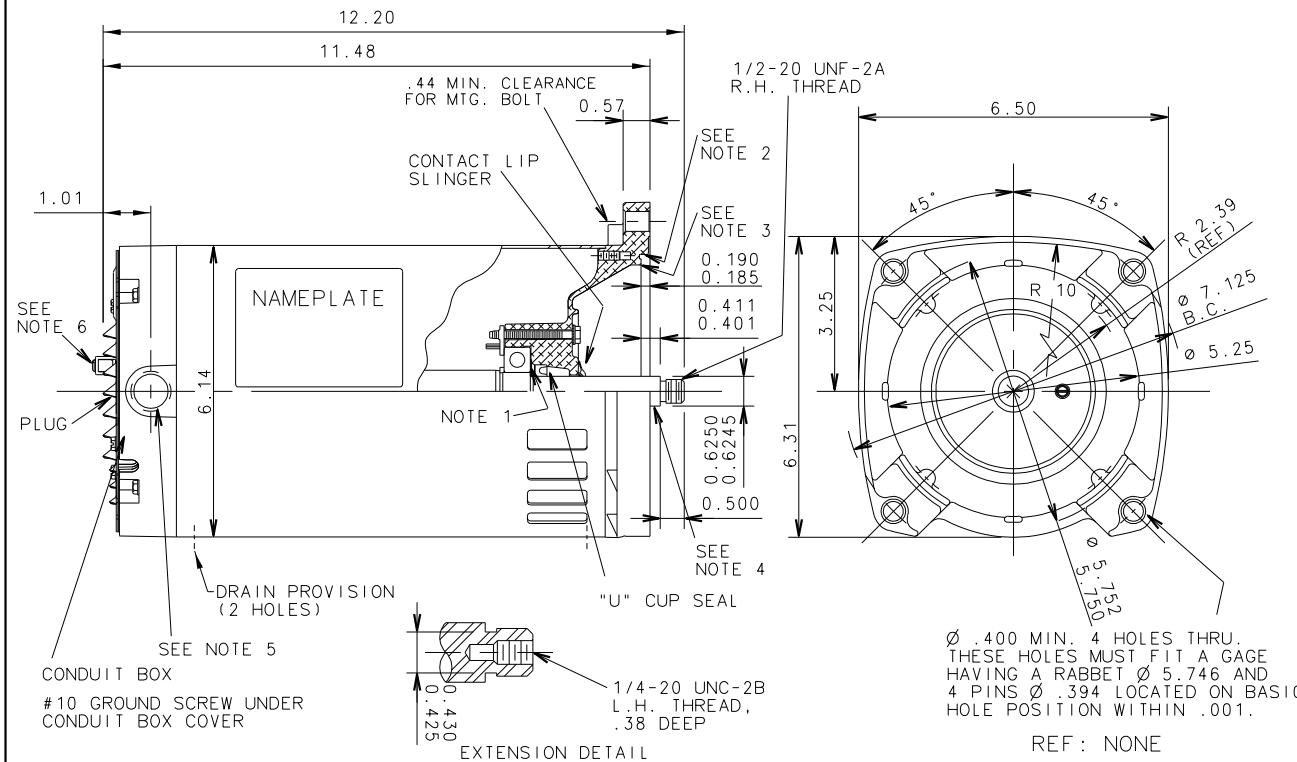


THE INFORMATION DISCLOSED HEREIN INCLUDES PROPRIETARY RIGHTS OF BLUFFTON MOTOR WORKS. NEITHER THIS DRAWING NOR THE INFORMATION DISCLOSED THEREIN SHALL BE REPRODUCED OR TRANSFERRED TO OTHER DOCUMENTS OR USED OR DISCLOSED TO OTHERS FOR MANUFACTURING PURPOSES OR FOR ANY OTHER PURPOSES, EXCEPT AS SPECIFICALLY AUTHORIZED IN WRITING BY BLUFFTON MOTOR WORKS.

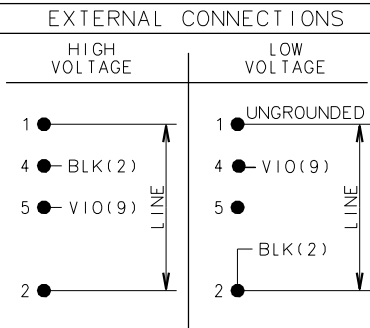
1103017451

UNLESS OTHERWISE SPECIFIED DIMENSIONS WITHOUT TOLERANCES ARE REFERENCE ONLY



- NOTES
1. SHIMS ADDED TO MEET MOUNTING FACE TO SHOULDER DIMENSION .411/.401
  2. ECCENTRICITY RELATIVE TO SHAFT .004 T.I.R. MAX.
  3. FACE WOBBLE RELATIVE TO SHAFT .004 T.I.R. MAX.
  4. ECCENTRICITY .002 T.I.R. MAX.
  5. 1/2-14 NPT TAPPED HOLE WITH 3 1/2 TO 5 THREADS FOR CONNECTION OF CONDUIT PROVIDED.
  6. EXTERNAL GROUND TERMINAL IS PROVIDED FOR BONDING ALL NON-CURRENT CARRYING METAL PARTS OF THE UNIT STRUCTURAL METAL OF THE SWIMMING POOL.
  7. ALL MOTORS HAVE SAFETY WARNING LABEL ON NAMEPLATE.
  8. GASKETS UNDER CONDUIT COVER AND CORD PLUG.

LEADS  
TERMINAL BOARD



MOTOR DATA

TYPE	CSIR	ENCLOSURE	DRIPPROOF	VIEWING LEAD END	MOTOR ROTATION	CW
HP	0.75	BEARINGS	BALL	ASSEMBLY ROTATION	CW	
PH	1	PAINT	ALTO BLUE	ASSEMBLY VOLTAGE	HIGH	
RPM	3450	MOUNTING POSITION	HORIZONTAL	THERMALLY PROTECTED TYPE S.	AUTOMATIC	
VOLTS	115/230	END CAP	ASSEMBLED	WINDING AND TEST SPEC	334769	
MAX. AMPS		ENVIRONMENTAL CONDITION	WET	CUSTOMER NAME	BLMW STD	
S.F. AMPS	12.8/6.4	SHAFT MATERIAL	STAINLESS STEEL	CUSTOMER PART NO.	B1244	
FRAME	56Y			DRAWN	GWB 4-14-14	
TIME RATE	CONT	MAX. AMB.	50 °C	APPROVED	.	
KVA CODE	L	INS. CLASS	B	RELEASED	.	

PAR NO	REV	CHANGE	FILM	DATE
115091	3	SHELL AND SHAFT INCREASED 0.75"		BKG 1/6/14

**BLUFFTON MOTOR WORKS**  
Bluffton, Indiana 46714

MODEL NUMBER  
1103017451

DIST: 3-21(2)-26-31-35