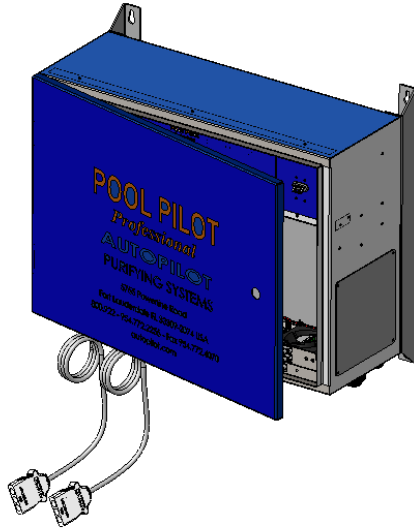


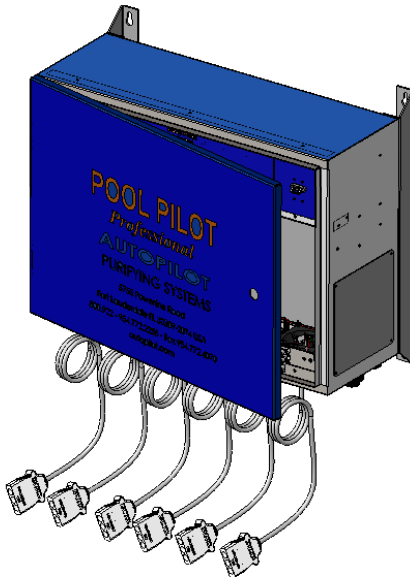
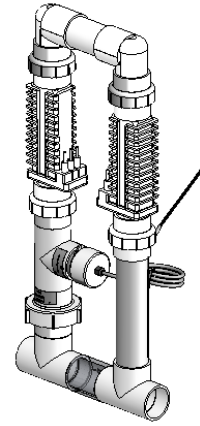
POOL PILOT PROFESSIONAL

Professional



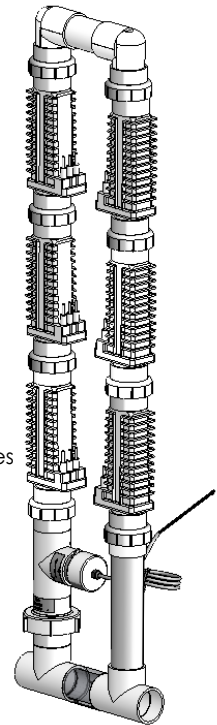
PRO2US: Professional System

Includes:
78102 Professional Unit with 2 Power Modules
941-215C Professional manifold 2-Cells



PRO6US: Professional System

Includes:
78106 Professional Unit with 6 Power Modules
941-615C Professional manifold 6-Cells



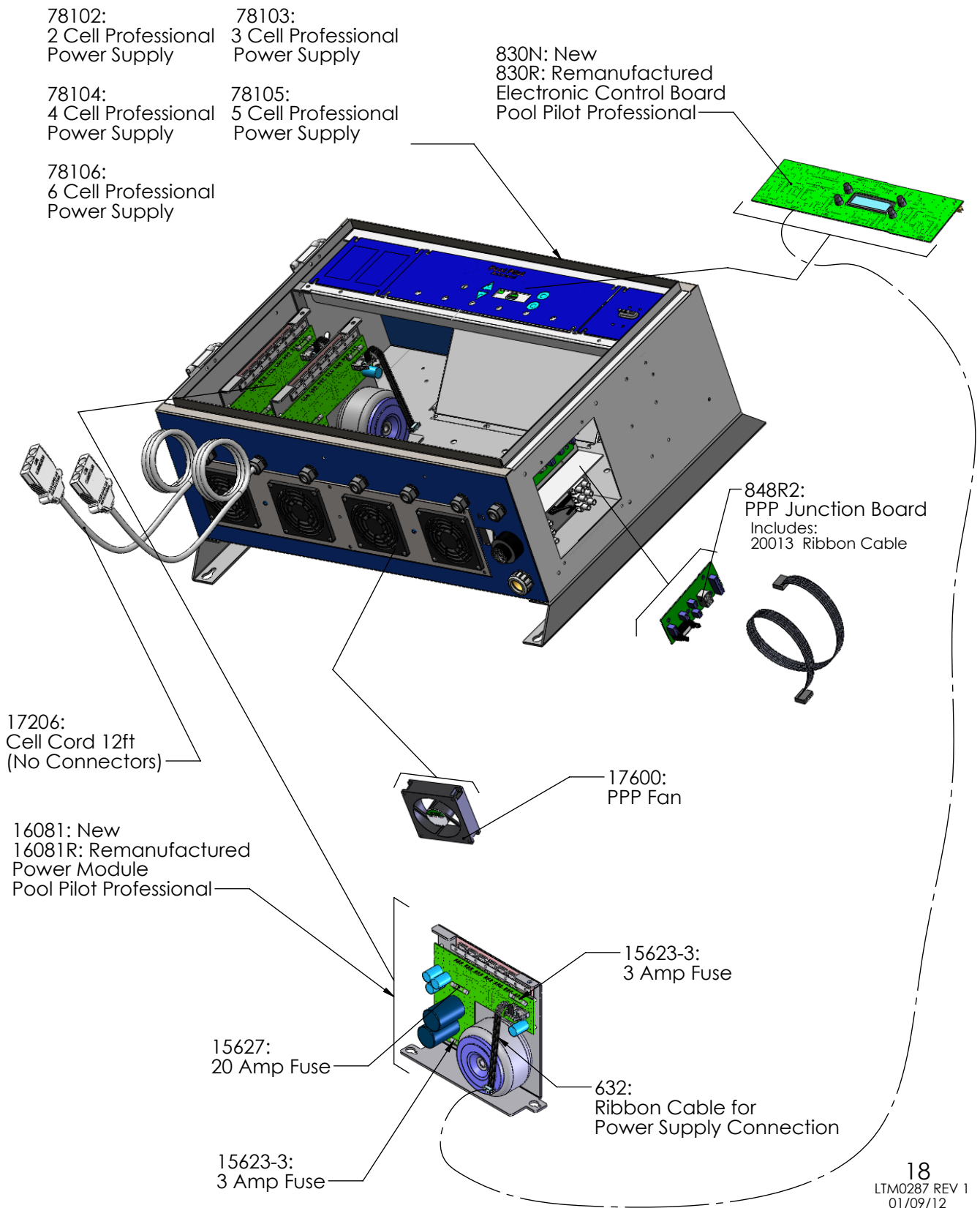
Complete Systems

Parts	Description
PRO2US	Professional with 2 power modules & 2 Comm. Cell Manifold
PRO3US	Professional with 3 power modules & 3 Comm. Cell Manifold
PRO4US	Professional with 4 power modules & 4 Comm. Cell Manifold
PRO5US	Professional with 5 power modules & 5 Comm. Cell Manifold
PRO6US	Professional with 6 power modules & 6 Comm. Cell Manifold
PRO2EU	CE Professional with 2 power modules & 2 Comm. Cell Manifold
PRO3EU	CE Professional with 3 power modules & 3 Comm. Cell Manifold
PRO4EU	CE Professional with 4 power modules & 4 Comm. Cell Manifold
PRO5EU	CE Professional with 5 power modules & 5 Comm. Cell Manifold
PRO6EU	CE Professional with 6 power modules & 6 Comm. Cell Manifold

POOL PILOT PROFESSIONAL (PPP)

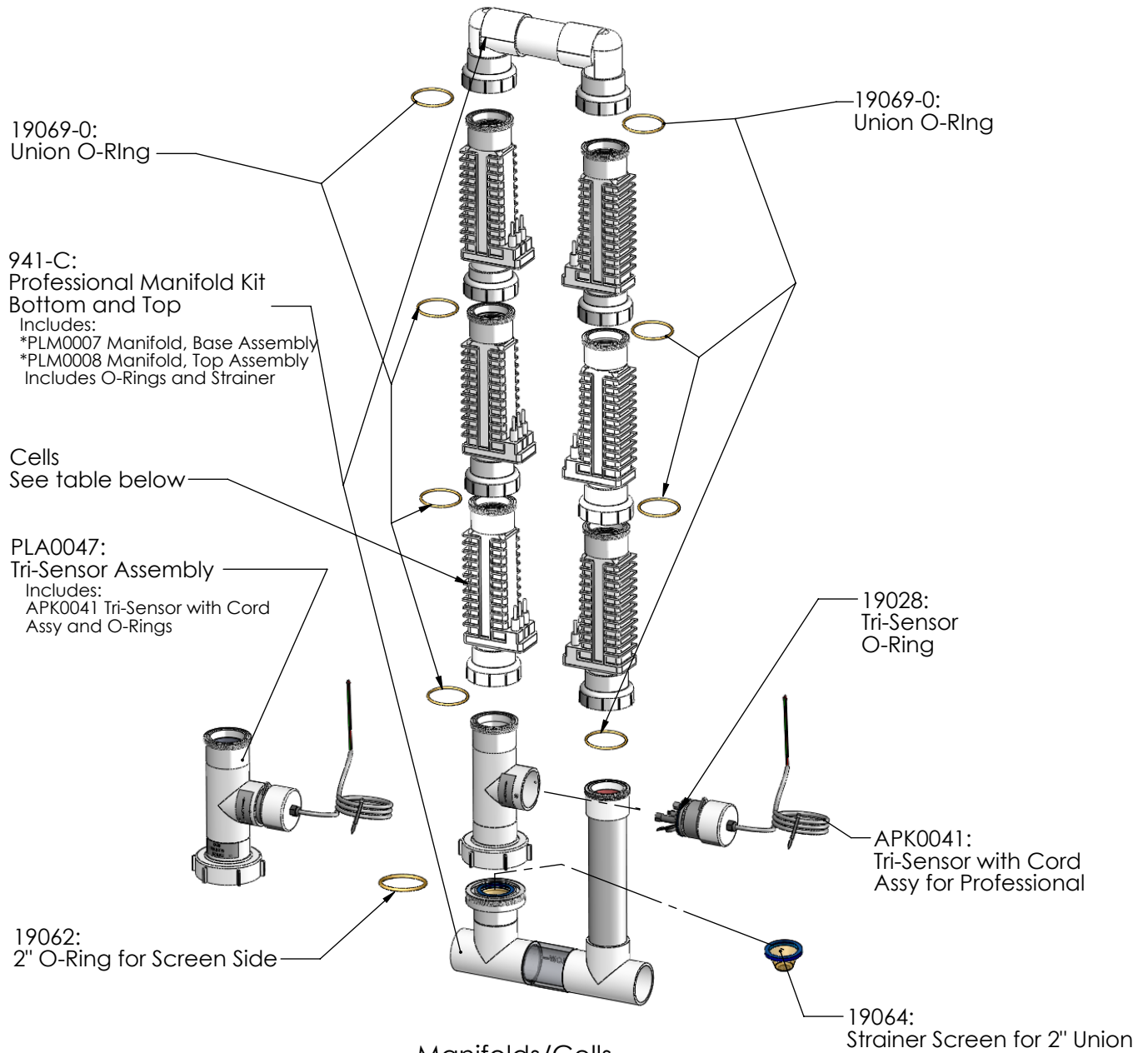
Professional

Power Supply Parts (78102 Shown)



PROFESSIONAL SYSTEM MANIFOLDS Professional

(941-615C Shown)

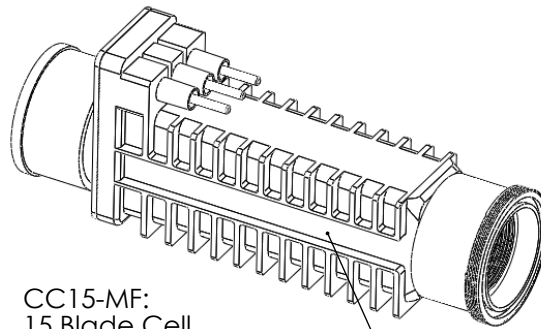


MANIFOLD TYPE	DESCRIPTION	CELL TYPE	DESCRIPTION	PAGE
941-215C	Manifold Commercial with 2 CC-15 Cells	CC15-MF	15 Blades	20
941-315C	Manifold Commercial with 3 CC-15 Cells	CC15-MF	15 Blades	20
941-415C	Manifold Commercial with 4 CC-15 Cells	CC15-MF	15 Blades	20
941-515C	Manifold Commercial with 5 CC-15 Cells	CC15-MF	15 Blades	20
941-615C	Manifold Commercial with 6 CC-15 Cells	CC15-MF	15 Blades	20

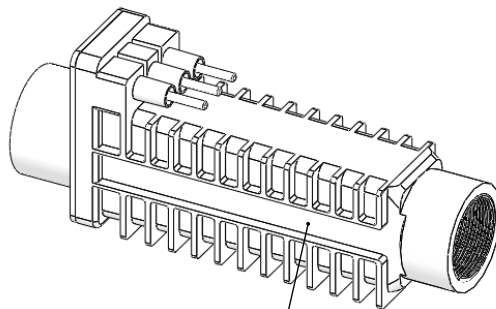
*Cannot be ordered separately

CELL OPTIONS

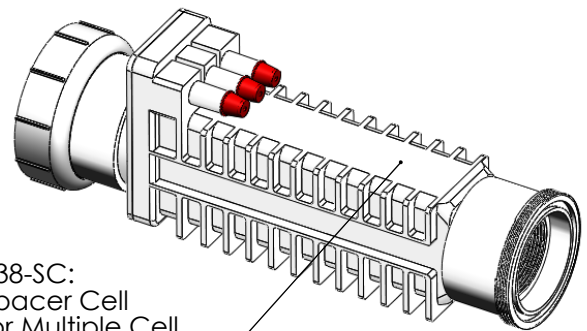
Professional



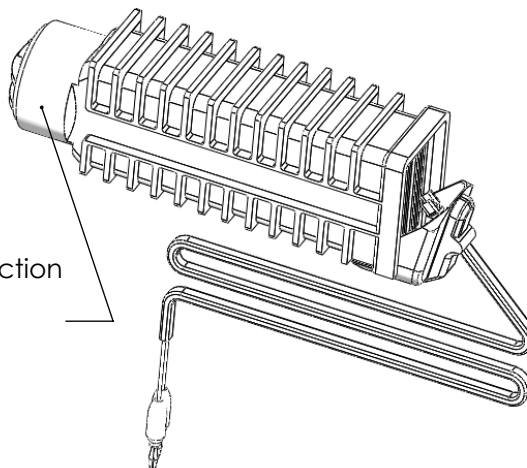
CC15-MF:
15 Blade Cell
Male/Female Unions
(Commercial)
for Multiple Cell Manifolds



CC15-NU:
15 Blade Cell
with No Unions (Commercial)

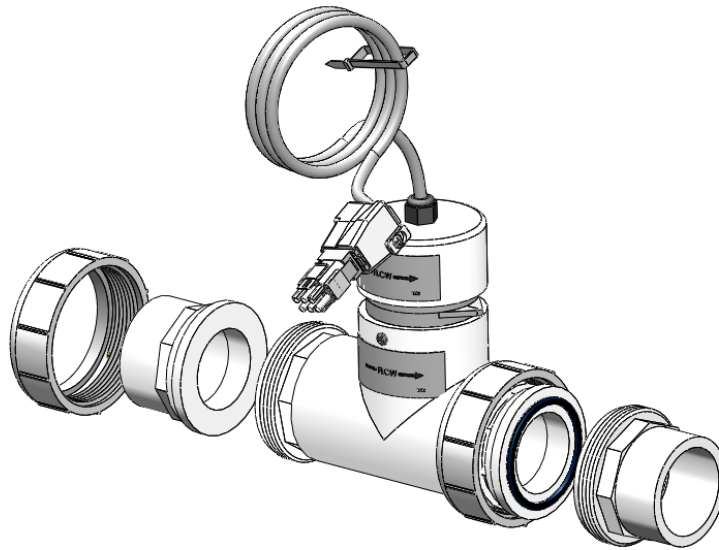


938-SC:
Spacer Cell
for Multiple Cell
Manifolds



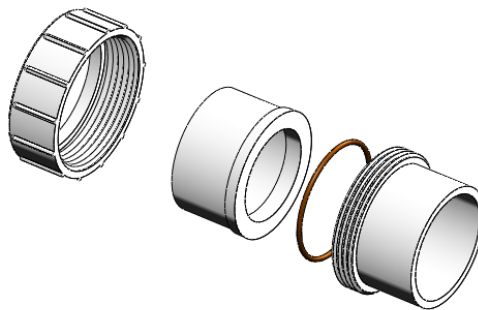
CC15-BP-CC25:
15 Blade Cell Convection
With Banana Plugs
25 ft Cord

MANIFOLD ACCESSORIES/TOOLS Professional



APK0038: Tri-Sensor Assy for Convection Cell Applications

Includes:
19009 2" T Slip x Slip x Slip
312-A Union Nut
312-F 2" Spigot/1.5" Slip X Female Union
312-C Union Half, 1.5" Slip/2" Spigot x Male Thread Union
*15405 HDW Screw #6x1/2 PPSMS SS
APA0003 Tri-Sensor with Cord Assy 12 ft

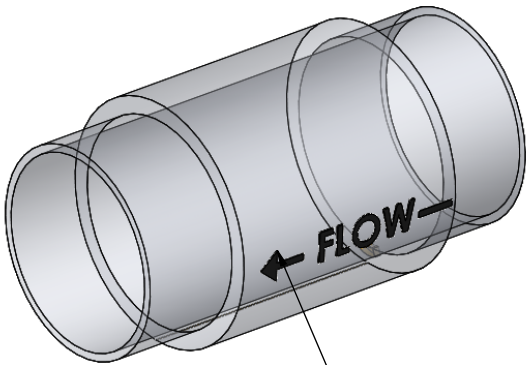


2627: Union Kit

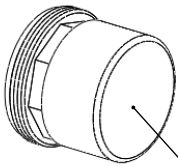
Includes:
312-A Union Nut
312-B Union Half, 2" Slip x Female Union
312-D Union Half, 2" Slip x Male Thread Union (with O-Ring 19069-0)

*Cannot be ordered separately

MANIFOLD ACCESSORIES/TOOLS Professional

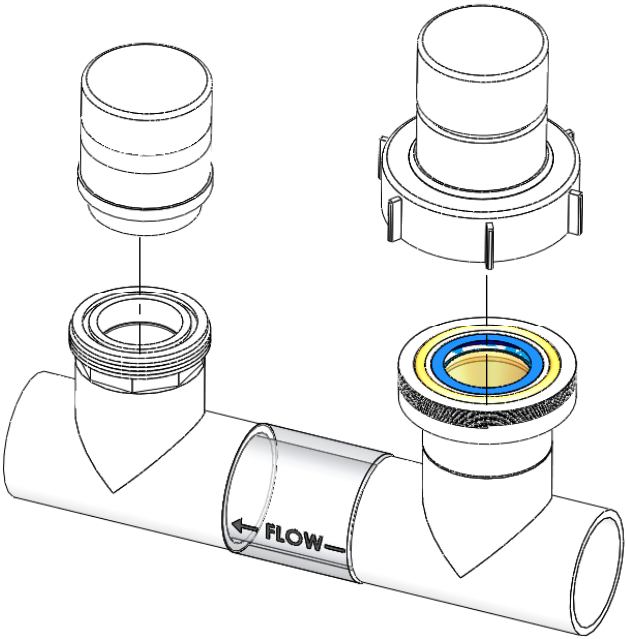
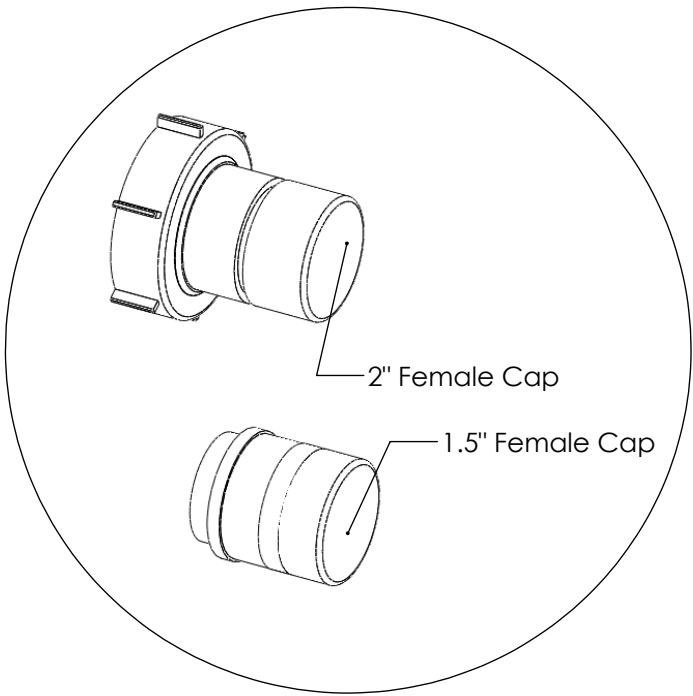


19096:
2" Check Valve 5 lbs



PLA0113:
Cell Cleaning
Kit (Male)

996:
Cap Kit



996 SHOWN ON MANIFOLD
BASE ASSEMBLY