

# ACID Magic<sup>®</sup>

The **User Friendly** Muriatic Acid!<sup>™\*</sup>



## Product Guide



Registration  
Number: 137354  
Category Code: A3

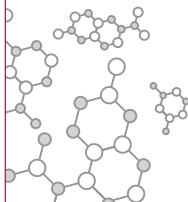
Certified to  
NSF/ANSI Standard 50

*Maximum use  
level 40 mg/L*

Certified to  
NSF/ANSI 60

*Maximum use  
level 40 mg/L*

**Certol**<sup>®</sup>  
Industrial



Developing the Solutions For You  
(800) 843-3343 • [www.Certol.com](http://www.Certol.com)



## Developing the Solutions For You

Certol specializes in producing user friendly products for the pool and spa, marine, construction, commercial and household cleaner, building maintenance and masonry markets. With our biodegradable formulations, strict adherence to current Good Manufacturing Practices (cGMPs) and full compliance with all NSF certification standards and FDA and EPA regulations, you can be confident that only the safest and highest quality products are being delivered.

Spanning many industries, Certol's industrial line of products is designed with the end user in mind. We work tirelessly to create new and innovative products that make your customer's job easier and safer without compromising product strength and effectiveness.

Certol's Industrial products are used by an ever-increasing number of industries:

- Pool and Spa
- Marine
- Mining
- Hardware Retail
- Government/Municipal
- Parks and Recreation
- Waste Water Treatment
- Food and Beverage
- Masonry
- Janitorial
- Household Cleaner
- Sugar Beet

Product Profile . . . . .	4 - 5
Test Results . . . . .	6
How to Use (HTU): For general cleaning instructions, visit ACID Magic on the web: <a href="http://www.Certol.com/ACIDMagic">www.Certol.com/ACIDMagic</a>	
HTU: General Cleaning . . . . .	7
HTU: Acid Washing Pools . . . . .	8 - 9
HTU: Etching Concrete . . . . .	10 - 11
HTU: Adjusting Water Chemistry . . . . .	12 - 13
HTU: Removing Efflorescence on Masonry and General Masonry Cleaning . . . . .	14 - 15
HTU: Cleaning Tile, Toilets, and Tubs . . . . .	16
HTU: Redi-Mix Truck and Tool Cleaning . . . . .	17
Frequently Asked Questions (FAQs) . . . . .	18



Certified to  
NSF/ANSI Standard 50

ACID Magic is certified by NSF  
to NSF/ANSI Standard 50:

Equipment for Pools, Spas, Hot Tubs, and Other Recreational Water Facilities.

**ACID Magic®**

Call **1-800-843-3343** for more information  
or visit **[www.Certol.com/ACIDMagic](http://www.Certol.com/ACIDMagic)**



# ACID Magic®

The **User Friendly** Muriatic Acid!™\*



## No Phosphates or Phosphorus Containing Ingredients!

ACID Magic is a full strength muriatic-based product formulated to ship, use, and store easier than standard muriatic acid. This revolutionary blend of proprietary ingredients offers the cleaning and pH reduction of powerful acids while providing increased usability.

### USES:

#### POOL AND SPA\*:

- Tested safe in all heated/unheated pools.
- ACID Magic is certified by NSF to NSF/ANSI Standard 50.
- Adjusts pool and spa water chemistry.\*
- Extremely effective acid wash.
- Cleans filters, chlorine generators and meter electrodes.

#### DRINKING WATER TREATMENT:

- ACID Magic is certified by NSF to NSF/ANSI Standard 60.
- Corrosion and scale control.
- Descaler.
- pH adjustment.

#### PAINT PREPARATION AND GENERAL CLEANING:

- Use to etch concrete in preparation for painting.
- Removes efflorescence from masonry.
- Cleans excess mortar from brick and cinder block.
- Removes rust, scale, mineral build-up, and stains.
- Certified NSF Category A3 and Certified Kosher for cleaning food processing equipment.
- Cleans tile and porcelain in restrooms and locker rooms.
- ACID Magic has many other uses, too!

### FEATURES:

- Up to 90% less fumes than standard muriatic acid.
- Buffering agents prevent burns to intact skin.
- Clean and clarify like full strength 20° Baume, 31.45%, muriatic acid\*.
- Use ACID Magic exactly as you would standard muriatic acid.

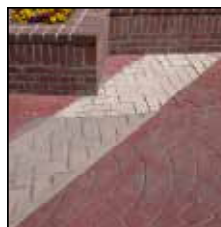
### BENEFITS:

- Reduced fumes equal a better working environment. Also, less corrosion to storage areas, pump rooms and equipment.
- Quarts and gallons ship Limited Quantity.
- Eliminates the risk of burns to intact skin.
- Less fuming means less evaporation of acid into the air.
- ACID Magic has all the strength of standard muriatic acid, but with less harmful effects.

ACID Magic Description	Qty.	Order#
1 Quart Case	15	USA/32
1 Gallon Case	4	USA/128
5 Gallon Drum	1	USA/5G
15 Gallon Drum	1	USA/15G
30 Gallon Drum	1	USA/30G
55 Gallon Drum	1	USA/55G
275 Gallon Tote	1	USA/275G

*Truckloads and totes by special order only. Gallon and quart cases ship via UPS and FedEx, and are classified Limited Quantity. ACID Magic will not burn intact skin, but proper eye and hand protection is required. Do not allow contact with mucous membranes (eye, nose, and mouth).*

**\*ACID Magic should not be used to aid or effect any pool disinfectant product or other water modifier.**



# ACID Magic®

## The User Friendly Muriatic Acid!™\*

### Description:

ACID Magic is a user friendly muriatic acid\* that combines a buffer with hydrochloric acid, making the acid easier to use. This product offers the advantages of powerful acids while significantly improving the overall health and safety risk profile.

### Intended Use:

#### POOL AND SPA\*:

ACID Magic is certified by NSF to NSF/ANSI standard 50: Equipment for pools, spas, hot tubs and other recreational water facilities. Tested safe in all heated/unheated pools. Adjusts pool and spa water chemistry.\* Apply ACID Magic as an acid wash to remove rust, scale, mineral deposits, and stains from glass, tile, and porcelain surfaces in showers, locker rooms, and restrooms.

#### CONCRETE AND MASONRY:

Use to etch concrete in preparation for painting. ACID Magic cleans exterior brick and concrete surfaces, removes excess mortar from brick, cleans stone and grout, brightens walkways, patios, and driveways, and cleans efflorescence.

#### FOOD/BEVERAGE:

Use in acid baths/washes. Cleans lines, vats, tanks, etc. ACID Magic is certified NSF Category A3 and Certified Kosher.

#### GENERAL MAINTENANCE:

Removes calcium and other mineral stains from water heaters, cooling towers, tubs, toilets, and showers. Removes rust, mildew stains, scale, and mineral build-up. Excellent as an acid wash and effective filter cleaner. Use to etch metal surfaces in preparation for painting. Removes mineral buildup from water fountains. ACID Magic has many other uses, too!

#### DRINKING WATER TREATMENT:

ACID Magic is certified by NSF to NSF/ANSI Standard 60 for use as a drinking water treatment chemical. Use for pH adjustment, corrosion and scale control and as a cleaning agent for water treatment lines.

### Product Specifications:

pH Concentrate: Less than one.  
Shelf Life: 5 years.  
Disposal: Dispose according to all local, state, and federal regulations.

### Product Capabilities:

ACID Magic reduces noxious fumes by up to 90%. It will not burn intact skin or protein of the body. By reducing the risk of acid burns and toxic fumes, it allows for easier handling, transportation, and storage. Due to reduced fuming, there is less corrosion to metal structures, including storage areas, pool equipment, and filtration systems. ACID Magic is as effective upon oxides of metal when compared with standard muriatic acid.

### Application:

For general cleaning and etching, add 1 part ACID Magic to 4 parts water. Certain applications require weaker solution. Always check an inconspicuous area. For pH adjustment, consult a local pool and spa\* professional for proper dosage. Use at the same rate as standard muriatic acid. Use caution when using on aluminum or metal plated products as damage may occur. For detailed instructions, visit ACID Magic on the web: [www.Certol.com/ACIDMagic](http://www.Certol.com/ACIDMagic)

### Use Precautions:

Contains hydrochloric acid. Keep out of sun and away from heat. May cause severe burns on contact with eyes and mucous membranes. Avoid possible vapors. **Always provide active ventilation when working with ACID Magic.** Use of an acid vapor respirator may be necessary in enclosed areas. Do not take internally. Keep container closed.

**For specific technical and safety information, including SDS, please visit the Certol website:**  
[www.Certol.com/ACIDMagic](http://www.Certol.com/ACIDMagic)



Certified to NSF/ANSI 50  
Maximum use level 40 mg/L



Certified to NSF/ANSI 60  
Maximum use level 40 mg/L



Certified



Registration Number: 137354  
Category Code: A3



For more information, please visit our site:

- Product Profile
- SDS
- FAQ's
- How To Use



# Test Results

ACID Magic® works instantly to clean and remove stains, discoloration, and debris from scaling, rust, and exhaust from a variety of surfaces. These images depict tests performed with ACID Magic to illustrate how well it worked on a variety of surfaces!

Acid washing a pool to get it ready for the season.



**BEFORE**



**AFTER**

Removing rust and cleaning an old u-joint.



**BEFORE**



**AFTER**

## How to Use

# ACID Magic®

The User Friendly Muriatic Acid!™\*

*\*ACID Magic should not be used to aid or effect any pool disinfectant product or other water modifier.*

## General Cleaning



*ACID Magic is the best way to remove stubborn rust, hard water and mineral deposits from a variety of surfaces. It can be used to remove calcium and scum build-up on steel and iron parts, most plastics, painted block and metal, and other non-porous, non-metal surfaces.*

**READ INSTRUCTIONS IN THEIR ENTIRETY BEFORE PROCEEDING.**

### PRECAUTIONS:

- While using ACID Magic, protective eyewear and gloves are always required.
- **Active ventilation is required** when working indoors.
- **When diluting, ALWAYS add the ACID Magic to water, NOT water to the ACID Magic. This eliminates the potential of an unwanted reaction that may cause dangerous splashing to occur.**
- **Do not apply to dry surfaces.** Always wet surface prior to application, including any adjoining areas, in case of accidental spillage or overspray.
- **Do not allow the surface to dry with ACID Magic solution on it.**
- Use caution when applying ACID Magic to avoid contact with other surfaces, such as wood or metal, as an unwanted reaction and discoloration of surfaces could occur.
- Avoid contact with vegetation. Excess solution should be diverted away from grass, trees, and shrubs. Should accidental contact with vegetation occur, flush with large amounts of water.
- Dispose of ACID Magic according to all local, state, and federal regulations.

### GENERAL CLEANING: DILUTION:

- Dilute 1 part ACID Magic to 4 parts water.

### APPLICATION:

- Prepare a baking soda solution prior to application. Baking soda solution can be obtained by dissolving 2 - 4 parts sodium bicarbonate (baking soda) to 100 parts water.
- Wearing gloves, apply with acid resistant spray bottle or sponge. Lightly scrub surface with natural, soft bristle brush or scouring pad. Rinse thoroughly with water. If another application is needed, repeat and rinse.
- **Rinse again with water.**
- Apply baking soda solution to surface to neutralize any remaining acid. Scrub with scouring pad.
- Flush thoroughly with water.
- Repeat as necessary.



## ACID Magic<sup>®</sup>

The User Friendly Muriatic Acid!<sup>TM\*</sup>

*\*ACID Magic should not be used to aid or effect any pool disinfectant product or other water modifier.*

### Acid Washing Pools and Concrete



*ACID Magic's unique chemical blend not only provides substantial fume and chemical burn reduction, but also works extra hard to remove pool stains and can produce better results than traditional muriatic acid!*

**READ INSTRUCTIONS IN THEIR ENTIRETY BEFORE PROCEEDING.**

#### PRECAUTIONS:

- While using ACID Magic, protective eyewear and gloves are always required.
- **Active ventilation is required** when working indoors.
- ACID Magic is a hydrochloric/muriatic acid (HCl) based product, and is not recommended for all pool liners. Consult your pool liner manufacturer for compatibility.
- **Do not apply ACID Magic to dry plaster, concrete or other pool surfaces.** Always wet surface prior to application, including adjoining areas, in case of accidental spillage.
- **Do not allow the surface to dry with ACID Magic solution on it.**
- Use caution when applying ACID Magic to avoid contact with other surfaces, such as wood or metal, as unwanted reaction and discoloration of surfaces may occur.
- While acid washing is a great way to clean and brighten pools, occurrence should be limited to once per season unless necessary. Excessive acid washing can weaken the pool wall, as it "etches" away the plaster.
- **When diluting, ALWAYS add the ACID Magic to water, NOT water to the ACID Magic. This eliminates the potential of an unwanted reaction that may cause dangerous splashing to occur.**
- Discharge permit may be necessary. Dispose of ACID Magic according to all local, state, and federal regulations.



#### DILUTION:

Begin by diluting ACID Magic 1:2 with water. This dilution is obtained by adding 1 gallon ACID Magic to 2 gallons water. Expect coverage of approximately 100 - 300 square feet per gallon of solution, depending on the depth and condition of the pool (individual results may vary depending on conditions). Should a stronger solution be desired (or necessary), add more ACID Magic to the water, up to full strength.





#### APPLICATION:

- Before beginning acid wash, wash pool with TSP (trisodium phosphate solution) to remove oil residues, following manufacturer's directions.
- Work in small areas, beginning in the shallow end of the pool. Complete process in one area before moving to the next.
- Apply ACID Magic solution with a sprinkling can or low pressure acid resistant sprayer. A mop may be used for application to pool walls. Use caution to avoid splashing of the solution.
- Apply ACID Magic solution to pool surface liberally. Lightly scrub with a natural, soft bristle brush as needed.
- Allow to dwell 2 - 4 minutes or until clean. Dwell time should depend on desired degree of cleaning. If "etching" is desired, a good way to determine if the plaster has been properly etched is to apply water to the surface. If the water is quickly absorbed into the plaster, it is etched. If the water pools or remains on the surface, another application is needed. Because of irregularities in plaster, some areas of the pool's surface may require a second application.
- Rinse thoroughly after each application.
- After the pool is acid washed, rinse the pool surface again with water.
- Neutralize the pool surface and wastewater by dissolving 2 - 3 oz. TSP (trisodium phosphate solution) or soda ash to 1 gallon water. Scrub the surfaces of the pool and rinse again. Failing to neutralize the acid can cause pool pH to be low once the pool is filled again. Also, discharging large amounts of acidic, unneutralized water can be harmful to the environment and may violate local, state, and federal regulations.
- Rinse and drain pool thoroughly once again with clean water before filling.
- Clean tools thoroughly with water.



## How to Use

# ACID Magic®

The User Friendly Muriatic Acid!™\*

*\*ACID Magic should not be used to aid or effect any pool disinfectant product or other water modifier.*

## Etching Concrete



*ACID Magic is the best way to etch concrete and prepare for painting.*

### READ INSTRUCTIONS IN THEIR ENTIRETY BEFORE PROCEEDING.

#### PRECAUTIONS:

- While using ACID Magic, protective eyewear and gloves are always required.
- **Active ventilation is required** when working indoors.
- **Do not apply to dry concrete.** Always wet concrete prior to application, including any adjoining areas, in case of accidental spillage.
- Do not apply to new concrete. Concrete should be at least 90 days old at the time of treatment.
- **When diluting, ALWAYS add the ACID Magic to water, NOT water to the ACID Magic. This eliminates the potential of an unwanted reaction that may cause dangerous splashing to occur.**
- **Do not allow the concrete to dry with ACID Magic solution on it.**
- Use caution when applying ACID Magic to avoid contact with other surfaces, such as wood or metal, as an unwanted reaction and discoloration of surfaces may occur.
- Avoid contact with vegetation. Excess solution should be diverted away from grass, trees and shrubs. Should accidental contact with vegetation occur, flush with large amounts of water.
- After completion, do not walk on concrete for 3 - 4 days and wait 7 - 10 days before driving on newly etched concrete. Drying time depends on humidity in your area.

#### RECOMMENDATIONS:

- **Active ventilation is required** when working indoors.
- Concrete etching is usually a two person job.
- Prepare neutralization solution, found in Step 4, prior to etching concrete.
- A machine buffer is recommended, however a natural, stiff bristle broom can be used to scrub the surface.

- Make sure surface is clean. Remove all excess dirt and loose concrete before beginning the process. ACID Magic will not remove sealers or paints. These substances must be removed by sanding the surface or by using a concrete paint stripper or remover.
- **For best results, do not etch concrete when the temperature is below 41°F (5°C).**

#### DILUTION:

**Start with a 1:4 dilution of ACID Magic to water. This dilution is obtained by adding 1 gallon ACID Magic to 4 gallons water in a plastic bucket.** This mixture will cover approximately 100 square feet (individual results may vary depending on conditions). If a stronger solution is needed, up to a 1:2 dilution of ACID Magic to water can be used.





#### **APPLICATION:**

##### **Step 1 - FLOOR PREPARATION:**

- Inspect concrete for sealants. This can be done by pouring a small amount of diluted ACID Magic and water solution on an inconspicuous area. A "bubbling and hissing" reaction should occur. If not, sand or strip the surface to remove sealant.
- Properly clean the surface. Remove any loose concrete, then remove oil stains. Use water to remove following application.

##### **Step 2 - APPLICATION:**

- **Wet concrete with water, but do not allow water to pool. Wet adjoining areas to prevent damage from accidental spillage.**
- Apply solution with a plastic sprinkling can or acid resistant sprayer and allow ACID Magic solution to dwell 5 - 10 minutes. If using a machine buffer, scrub area until etched. If using a natural, stiff bristle broom, apply and scrub vigorously.
- Do not allow ACID Magic solution to dry.

##### **Step 3 - RINSE and INSPECT:**

- **Rinse thoroughly.**
- Concrete should be rough to the touch when properly etched and will feel similar to 80 grit sand paper.
- Another application may be necessary if being done by hand. If so, ensure the concrete is rinsed thoroughly between applications.

##### **Step 4 - FINAL RINSE:**

- After the concrete is properly etched, neutralize with either sodium bicarbonate (baking soda) or soda ash.
  - Soda ash neutralization solution: Dissolve 2 - 3 parts soda ash with 100 parts water.
  - Sodium bicarbonate neutralization solution (baking soda): Dissolve 3 - 4 parts baking soda with 100 parts water.
- Apply neutralization solution.
- Rinse and scrub thoroughly to remove all excess acid, neutralization solution and concrete particles. High pressure washing of the area is recommended.
- **Rinse again with water.**
- Use of a floor squeegee or wet vacuum is recommended to remove any remaining excess liquid.
- Vigorously sweep area once dry to remove any left behind salts. A mineral/salt remover can be used if excess salts remain.
- After completion, do not walk on concrete for 3 - 4 days and wait 7 - 10 days before driving on newly etched concrete. Drying time depends on humidity in your area.
- Clean tools thoroughly with water.
- Allow 3 - 4 days before applying sealer or paint to newly etched surfaces.

**Notice: Provide active ventilation for several hours to allow concrete to dry and avoid irritations from any possible fumes.**

## ACID Magic<sup>®</sup>

The User Friendly Muriatic Acid!<sup>TM\*</sup>

*\*ACID Magic should not be used to aid or effect any pool disinfectant product or other water modifier.*

### Adjusting Pool and Spa Chemistry\*



Adjusting pool and spa chemistry\* is essential for maintaining a healthy swimming environment. Follow this general guide to achieve and maintain the proper water chemistry in your pool or spa. The water chemistry should be tested and adjusted regularly to maintain safe levels.

#### READ INSTRUCTIONS IN THEIR ENTIRETY BEFORE PROCEEDING.

#### PRECAUTIONS:

- While using ACID Magic, protective eyewear and gloves are always required.
- ACID Magic is a hydrochloric/muriatic acid (HCl) based product, and is not recommended for all pool liners. Consult your pool liner manufacturer for compatibility.
- **Active ventilation is required** when working indoors.

#### GENERAL pH INFORMATION:

- pH is the single most important factor in swimming pool water. This affects every chemical balance in pool water. pH indicates the relative acidity or alkalinity of water. pH is measured on a scale of 0 (high acidity) to 14 (high alkalinity). Neither extreme of this scale is safe to plant or animal life and may cause burns. While ACID Magic's pH is well below 1, it has been modified to prevent chemical burns to intact skin.
- The optimal pH range is a slightly alkaline pH of 7.2 to 7.8. pH levels above 8.0 may inhibit bather comfort, causing rash and irritation upon skin contact and eye contact, and may cause minerals to fall out of solution, making water cloudy. ACID Magic should not be used to aid or effect any pool disinfectant product or other water modifier.

#### POOL AND SPA WATER CHEMISTRY ADJUSTMENT:\*

- pH must be maintained between 7.2 and 7.8. The most desirable level for pH is between 7.4 and 7.6. Test pools and spas regularly to maintain proper levels.\* The pH is lowered by adding ACID Magic. Carefully add ACID Magic at the deep end of the pool and avoid pouring ACID Magic near pool walls or fittings.

- Source water alkalinity can vary from region to region.
- Run acid demand test to determine appropriate amount of ACID Magic to add to pool water to reach desired level.
- Consult your pool and spa service professional with questions regarding pH adjustment in your area.
- ACID Magic is certified by NSF to NSF/ANSI Standard 60 for use as a drinking water treatment chemical.
- **Raising pH** - Consult your pool system specifications and utilize the recommended chemical to raise the pH.





#### **ADJUSTMENT OF TOTAL ALKALINITY (TA):**

- Total alkalinity is a measure of water's resistance to change in pH. Expressed in parts per million (ppm), total alkalinity is the result of alkaline materials including carbonates, bicarbonates and hydroxides. This acid neutralizing capacity of water is desirable because it helps prevent wide variations in pH whenever small amounts of acid or alkali are added to the pool.
- **Total alkalinity should be maintained in the range of 60 to 180 ppm.**
- **If total alkalinity is too low** - pH changes rapidly when chemicals or impurities enter the water. When this occurs pH may drop rapidly, causing etching and corrosion. It can also cause the pH to rise quickly which can cause the water to cloud.
- **If total alkalinity is too high** - pH becomes difficult to adjust. A high pH level can lead to other problems such as cloudy water, scale formation, and filter problems.
- **Lowering total alkalinity** - Total alkalinity can be lowered by adding ACID Magic. Because of regional source water differences, contact your local pool and spa service professional for recommendations on proper dosage.
- **Raising total alkalinity** - Consult your pool system specifications and utilize the recommended chemical to raise the total alkalinity.

## ACID Magic®

The User Friendly Muriatic Acid!™\*

*\*ACID Magic should not be used to aid or effect any pool disinfectant product or other water modifier.*

### Removing Efflorescence on Masonry and General Masonry Cleaning



*ACID Magic is the best way to remove efflorescence caused by alkali mineral deposits as well as for general masonry cleaning and restoration.*

#### READ INSTRUCTIONS IN THEIR ENTIRETY BEFORE PROCEEDING.

#### PRECAUTIONS:

- While using ACID Magic, protective eyewear and gloves are always required.
- **Active ventilation is required** when working indoors.
- **Do not apply to dry brick or stone. Failure to wet brick prior to application may cause discoloration.** Always wet masonry and concrete prior to application, including any adjoining areas, in case of accidental spillage or overspray.
- **When diluting, ALWAYS add the ACID Magic to water, NOT water to the ACID Magic. This eliminates the potential of an unwanted reaction that may cause dangerous splashing to occur.**
- For best results when removing excess mortar, a treatment with ACID Magic should occur within 2 - 20 days of completion of masonry work.
- **Do not allow the masonry to dry with solution on it.**
- Use caution when applying ACID Magic to avoid contact with other surfaces, such as wood or metal, as an unwanted reaction and discoloration of surfaces may occur.
- Avoid contact with vegetation. Excess solution should be diverted away from grass, trees and shrubs. Should accidental contact with vegetation occur, flush with large amounts of water.

#### RECOMMENDATIONS:

- **Active ventilation is required** when working indoors.
- Make sure surface is clean and free of paint or grease. Remove all excess dirt and loose particles before beginning the process.

- Desired strength of solution will depend on intended purpose. Use a stronger dilution for removal of excess mortar. Use a weaker dilution to remove efflorescence and for general masonry cleaning.

#### DILUTION:

Dilute ACID Magic between 1:2 and 1:6 with water, depending on desired strength. Combine and mix solution of ACID Magic and water in a plastic bucket. This mixture will cover anywhere from 50 - 200 square feet, depending on dilution (individual results may vary depending on conditions).

#### APPLICATION:

##### Step 1 - SURFACE PREPARATION:

- Inspect masonry for sealants. This can be done by pouring a small amount of diluted ACID Magic and water solution in an inconspicuous area. A "bubbling and hissing" reaction should occur. If not, sand the surface to remove sealant.
- Properly clean the surface. Remove any loose mortar or concrete, then remove any oil stains. Use water to remove following application.





### **Step 2 - APPLICATION:**

- **Wet surface with water, but do not allow water to pool. Wet adjoining areas to prevent damage from accidental spillage.**
- Apply solution with a plastic sprinkling can or acid resistant sprayer. Lightly scrub the surface with a **natural**, stiff bristle broom and allow the ACID Magic solution to dwell no more than 5 minutes, less if visible lifting of minerals is present.
- Do not allow ACID Magic solution to dry on masonry.

### **Step 3 - RINSE and INSPECT:**

- Rinse thoroughly to remove any salts left behind from acid reaction.
- Another application may be necessary. If so, ensure the masonry is rinsed thoroughly between applications.
- Use of floor squeegee or wet/dry vacuum is recommended to remove any remaining deposits and / or excess water.
- Clean tools thoroughly with water.
- Allow 3 - 4 days drying time before applying any sealer or paint to surface.

**Notice: Provide active ventilation for several hours to allow masonry to dry and avoid irritations from any possible fumes.**

## How to Use

# ACID Magic®

The User Friendly Muriatic Acid!™\*

*\*ACID Magic should not be used to aid or effect any pool disinfectant product or other water modifier.*

## Cleaning Tile, Toilets, and Tubs



*ACID Magic is the best way to remove stubborn mineral deposits from porcelain and tile. It can be used to remove calcium and other stain build-up on tile, sinks, tubs, toilets and other non-porous, non-metal surfaces.*

**READ INSTRUCTIONS IN THEIR ENTIRETY BEFORE PROCEEDING.**

### PRECAUTIONS:

- While using ACID Magic, protective eyewear and gloves are always required.
- **Active ventilation is required** when working indoors.
- **When diluting, ALWAYS add the ACID Magic to water, NOT water to the ACID Magic. This eliminates the potential of an unwanted reaction that may cause dangerous splashing to occur.**
- **Do not apply to dry surfaces.** Always wet surface prior to application, including any adjoining areas, in case of accidental spillage or overspray.
- **Do not allow the surface to dry with ACID Magic solution on it.**
- Use caution when applying ACID Magic to avoid contact with other surfaces, such as wood or metal, as an unwanted reaction and discoloration of surfaces could occur.

**FOR GENERAL CLEANING: DILUTION:**

Dilute 1 part ACID Magic to 4 parts water.

### APPLICATION:

- Prepare a baking soda solution prior to application. Baking soda solution can be obtained by dissolving 2 - 4 parts sodium bicarbonate (baking soda) to 100 parts water.
- Wearing gloves, apply with acid resistant spray bottle or sponge. Lightly scrub surface with soft bristle brush or scouring pad. Rinse thoroughly with water. If second application is needed, repeat and rinse.
- **Rinse again with water.**
- Apply baking soda solution to surface to neutralize any remaining acid. Scrub with scouring pad.
- Flush thoroughly with water.

### FOR TOILETS AND URINALS:

**Toilet Bowls:** Simply add 6 - 8 ounces of ACID Magic to water in toilet bowl. Swish solution around in bowl with toilet brush, lightly scrubbing sides and under toilet rim to remove stains. Allow solution to sit in bowl for 3 - 5 minutes, then flush to rinse. Repeat if necessary to remove especially tough stains.

**For Urinals:** Remove strainer. Apply 6 - 8 ounces at top of urinal around water outlets using acid resistant spray bottle or sponge. Allow to sit for 5 minutes before continuing. Wearing gloves, gently scrub surface with **natural**, soft bristle brush or scouring pad. Flush to rinse. Tougher stains may require repeat application.





## How to Use

# ACID Magic®

The User Friendly Muriatic Acid!™\*

*\*ACID Magic should not be used to aid or effect any pool disinfectant product or other water modifier.*

## Redi-Mix Truck and Tool Cleaning



*ACID Magic is the best way to remove stubborn rust, hard water and mineral deposits from a variety of surfaces. It can be used to remove calcium and other stains that build-up on steel and iron parts, most plastics, painted block and metal, and other non-porous, non-metal surfaces.*

### READ INSTRUCTIONS IN THEIR ENTIRETY BEFORE PROCEEDING.

#### PRECAUTIONS:

- While using ACID Magic, protective eyewear and gloves are always required.
- **When diluting, ALWAYS add the ACID Magic to water, NOT water to the ACID Magic. This eliminates the potential of an unwanted reaction that may cause dangerous splashing to occur.**
- **Do not apply to dry surfaces.** Always wet surfaces prior to application, including adjoining areas, in case of accidental spillage.
- **Do not allow the surface to dry with ACID Magic solution on it.**
- Avoid contact with vegetation. Excess solution should be diverted away from grass, trees and shrubs. Should accidental contact with vegetation occur, flush with large amounts of water.
- Discharge permit may be necessary. Dispose of ACID Magic according to all local, state, and federal regulations.
- Test surface to be cleaned with various dilutions for safety and effectiveness.

#### RECOMMENDATIONS:

##### Mixer Exterior:

- New, reconditioned, or well maintained trucks: Dilute 1 part ACID Magic to 6 parts water
- Moderate concretions and regularly washed trucks: Dilute 1 part ACID Magic to 4 parts water
- Heavy build-up and seldom washed trucks: Dilute 1 part ACID Magic to 2 parts water
- Extra heavy build-up and rarely washed trucks: Dilute 1 part ACID Magic to 1 part water

Spray or brush on with natural bristle brush, let dwell for 5 minutes, agitate, and rinse. Repeat as necessary.

##### Mixer Interior:

- Dilute 1 part ACID Magic to 10 parts water.
- Apply a generous amount of solution into the mixer.
- Allow mixer to clean itself by running and agitating concretion.
- Flush with plenty of water.
- Repeat as necessary.

##### Tools and Machinery:

- Variable dilution 1:10 up to 1:1, the dilution depends on the amount of rust, plaster, or concrete on the tool. For heavier rust or concretion, use 1:1 to maximize effectiveness.
- Let dwell between 30 - 40 minutes.
- Rinse tool with water.
- Seal the tool with a lubricating metal protecting agent to prevent corrosion.





### What is ACID Magic?

ACID Magic is a full strength muriatic-based product formulated to ship, use, and store easier than standard muriatic acid. ACID Magic cleans, clarifies, and etches like full strength muriatic acid.\*

### How does ACID Magic compare to muriatic acid?

ACID Magic cleans, clarifies, and etches like standard 20° Baume, 31.45% standard muriatic acid.\*

### What makes ACID Magic so user friendly?

Our special blend of ingredients won't burn intact skin and reduces corrosive fumes, without diluting the acid. This makes it very effective to use both indoors and outdoors for a wide variety of cleaning and maintenance jobs. **Always provide active ventilation when working indoors.**

### What are the most common applications for ACID Magic?

You can use ACID Magic for any job that you would use muriatic and other mild to strong cleaning acids, such as:

- Adjusting pool and spa water chemistry.\*
- Cleaning and acid washing pool, spa and deck surfaces.
- Cleaning filters, chlorine generators and monitoring probes.
- Cleaning shower facilities, locker rooms and restrooms.
- Removing rust, scale, mineral build-up, mildew deposits and stains.
- Cleaning excess mortar and stains from brick, stone and other masonry.
- Paint preparation (etching) for concrete and metal surfaces.
- ACID Magic has many other residential, commercial and industrial uses including pool and spa\*, hardware, concrete and masonry, waste water treatment, food processing, oil field, mining, etc.

### How do I use ACID Magic?

ACID Magic can be used full strength or diluted up to 20:1, depending on the task at hand. Refer to the instructions on the label as a general guide, or the How to Use application instructions contained in this guide for more specific instructions. If you still have questions, please visit [www.Certol.com/ACIDMagic](http://www.Certol.com/ACIDMagic) or contact customer service at (800) 843-3343 for further assistance. Always test on an inconspicuous area before applying.

### On what surfaces can ACID Magic be used?

ACID Magic can be used on most hard surfaces such as concrete, plaster, granite, brick, stone, tile, glass, fiberglass, porcelain, rubber, some metals and most plastics. (Follow label directions and test in an inconspicuous area to check compatibility.)

### Are there any surfaces ACID Magic should not be used on?

Do not use on vegetation, wood, marble, limestone, polished granite, nylon, carpets, man-made fibers, zinc, and galvanized metals. Reacts with carbon steel, aluminum and oxidized metals and use with any of these materials should be tested first. Failure to provide adequate ventilation can cause discoloration to metal or metal plated surfaces.

### Do I need to wear personal protection equipment while using ACID Magic?

Always wear gloves and eye protection. It is not necessary to wear respiratory equipment unless you are particularly sensitive to acid fumes and/or are using the product in a poorly ventilated space. Always provide active ventilation. Users of ACID Magic should follow all local, state, and federal rules and regulations regarding this product, including SDS. (Always follow OSHA Safety Regulations when using acid products.)

### How does ACID Magic ship?

Quart and gallon cases can be shipped non-hazardous. These are classified as Limited Quantity, Consumer Commodity. Larger sizes are shipped as Corrosive. ACID Magic is classified as Corrosive Liquid, n.o.s. (contains Hydrochloric Acid), UN1760, Class 8, PG III.

### How do I store ACID Magic?

ACID Magic can be stored in almost any storeroom or warehouse. The greatly reduced fumes allow it to be stored without special covering or venting, as in the case of muriatic acid. Therefore, buildings, shelving and storage areas last longer. ACID Magic is still reactive with chlorine and other chemicals, and caution should be used when storing together in the case of an accidental spill. Store in a closed, properly labeled, acid resistant container. Product must not contact hydrogen sulfide gas, chlorine bleach, or cyanide.

### What are the freezing and boiling points of ACID Magic?

ACID Magic has a boiling point of approximately 212°F (100°C) and a freezing point below -58°F (-50°C). ACID Magic is chemically stable and will return to its normal state if frozen.

### How do I clean up ACID Magic in case of a spill?

In case material is released or spilled, deny access to the area. Ventilate the area well. Large spills or leaks should be cleaned up and controlled with an inert absorbent material. Flush surface with water and neutralize with soda ash or other acid-neutralizing agent. Prevent material from entering waterways. Reportable quantity (RQ) is 8,000 lbs.

### Why are NSF Standard 60 & NSF Standard 50 so important for ACID Magic?

NSF Standard 60 & NSF Standard 50 allows ACID Magic to be used for pH adjustment, corrosion and scale control in drinking water treatment and in pools. Qualifying for NSF Standard certification requires that both the product and manufacturing facility meet rigorous standards for quality before being deemed safe for use in drinking water treatment.

# Tough on Rust, Calcium & Hard Water Stains

No Phosphates or Phosphorus Containing Ingredients!

Won't Burn Intact Skin!



Easier on You!™

# ACID Magic®

The **User Friendly** Muriatic Acid!™\*



## Available in:

- Quart Bottle
- 1 Gallon Bottle
- 5 Gallon Drum
- 15 Gallon Drum
- 30 Gallon Drum
- 55 Gallon Drum
- 275 Gallon Tote

