



MAINTENANCE MADE EASY



PERISTALTIC PUMPS pg. 2
DIGITAL CONTROLLERS pg. 3
CONTROLLER SYSTEMS pg. 5
FLOWMETERS pg. 9
CHEMICAL TANKS pg. 10

MAINTENANCE MADE EASY

SOLUTIONS FOR THE SWIMMING POOL, SPA AND HOT TUB PROFESSIONAL

Our **Pro Series** peristaltic pumps deliver professional quality features that make operation and maintenance simple.

PRO SERIES FEATURES INCLUDE:

- A quick-release cover for fast tubing access
- Electronic controls for extended motor life
- A three-way switch controls Time/OFF/Continuous
- Self-priming pump
- Includes Clear Tygon and Black Norprene Squeeze Tubes
- 30 psi rating
- 18-ft. suction lift
- Pumps operate on 9-minute cycles
- Available in 120V or 240V corded or permanent wire
- Maximum amps - 2.5
- One-year limited warranty (tubing not included)
- **Manufactured in the USA**



three-roller operation



two-roller operation
(1) GPD pump only

ROLA-CHEM PRO SERIES OUTPUT RATES

| MODEL | MINIMUM FEED RATE/24HR | MAXIMUM FEED RATE/24HR | RECOMMENDED POOL/SPA CHLORINE TO FEED RATE |
|-------------|------------------------|------------------------|--|
| RC-252 SC | .01 GPD | .9 GPD | UP TO 500 GALLONS |
| RC-25/53 SC | .10 GPD | 12 GPD | 500 - 65,000 GALLONS |
| RC-103 SC | .34 GPD | 38 GPD | 65,000 - 150,000 GALLONS |
| RC-503 SC | 1.0 GPD | 77 GPD | 150,000 - 500,000 GALLONS |

GPD = GALLONS PER DAY

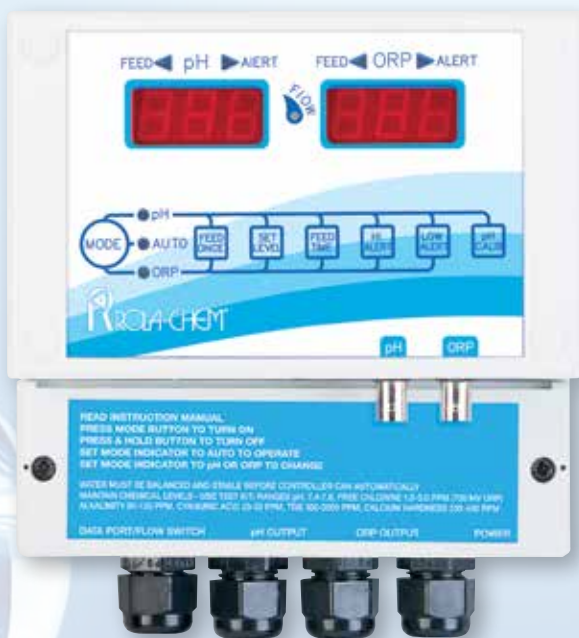
ROLA-CHEM PRO SERIES ESTIMATED MAXIMUM GALLONS PER DAY

| SETTINGS | ON | OFF | RC-252 | RC-25/53 | RC-103 | RC-503 |
|------------------------------|----------------|----------------|--------|----------|--------|--------|
| LO | 4 SEC. | 8 MIN. 56 SEC. | .01 | .10 | .34 | 1.00 |
| 2 | 1.5 MIN. | 7.5 MIN. | .18 | 1.20 | 3.72 | 8.88 |
| 3 | 3 MIN. | 6 MIN. | .33 | 3.60 | 10.80 | 24.00 |
| 4 | 4.5 MIN. | 4.5 MIN. | .50 | 6.00 | 19.40 | 40.00 |
| 5 | 6 MIN. | 3 MIN. | .66 | 8.40 | 25.20 | 53.00 |
| 6 | 7.5 MIN. | 1.5 MIN. | .78 | 11.00 | 33.40 | 67.00 |
| HI | 8 MIN. 56 SEC. | 4 SEC. | .90 | 12.00 | 38.00 | 77.00 |
| OUNCES PER MINUTE AT FULL ON | | | .08 | 1.06 | 3.37 | 6.84 |

ROLA-CHEM PUMPS

ARE **NSF** **cUL** US LISTED.

GENERATION II DIGITAL CONTROLLERS



NSF/ANSI 50 LISTED

MODEL RC554XP

P/N 554000

Digital pH/ORP Controller

INCLUDES: Controller, flow cell with flow switch, probes, 3/8" tubing and fittings.

| | pH | ORP | Feed Cycle |
|--------------------|---|------------|------------|
| • Factory Setting: | 7.4 | 650 mV | .6 sec. |
| • Display Range: | 6.8-8.2 | 0-995 mV | |
| • Setpoint Range: | 7.0-8.0 | 400-900 mV | |
| • Feed Cycles: | .6 to 900 seconds with 5-minute analyzation periods | | |
| • Power: | 120V corded (input/output) | | |
| • Feed: | Timed or Continuous | | |
| • Maximum Output: | 5 Amps | | |



NSF/ANSI 50 LISTED

MODEL RC554XXP

P/N 554300

Digital pH/Dual ORP Controller

USED TO CONTROL TWO SANITIZER SOURCES

INCLUDES: Controller, flow cell with flow switch, probes, 3/8" tubing and fittings.

| | pH | ORP1 | ORP2 | Feed Cycle |
|--------------------|---|------------|------------|------------|
| • Factory Setting: | 7.4 | 650 mV | 640 mV | .6 sec. |
| • Display Range: | 6.8-8.2 | 0-995 mV | 0-995 mV | |
| • Setpoint Range: | 7.0-8.0 | 400-900 mV | 400-900 mV | |
| • Feed Cycles: | .6 to 900 seconds with 5-minute analyzation periods | | | |
| • Power: | 120V corded (input/output) | | | |
| • Feed: | Timed or Continuous | | | |
| • Maximum Output: | 3.15 Amps | | | |

DIGITAL pH/ORP CONTROLLERS FEATURE:

- Digital readouts
- ORP technology
- Redox sensor
- Proportional feed or continuous feed
- Dip switch programmable settings
- Built-in out-of-range safety timeouts
- pH calibration
- Acid or base feed
- Microprocessor logic
- Globe flow cell with flow switch
- Compatible with most peristaltic pumps
- Can also be used with erosion feeder/solenoid applications
- **Manufactured in the USA**

ONE-YEAR LIMITED WARRANTY ON CONTROLLER ELECTRONICS AND PROBES

NOTE: It is recommended that an in-line filter system (part number 550591) be used before the flow cell.



NSF/ANSI 50 LISTED

MODEL RC554P
P/N 554200
Digital pH Controller

INCLUDES: Controller, flow cell with flow switch, pH probe, 3/8" tubing and fittings.

- | | | |
|--|--|-------------------|
| | pH | Feed Cycle |
| • Factory Setting: | 7.4 | .6 sec. |
| • Display Range: | 6.8-8.2 | |
| • Setpoint Range: | 7.0-8.0 | |
| • Feed Cycles: | .6 to 900 seconds with 5-minute analysis periods | |
| • Power: | 120V corded (input/output) | |
| • Feed: | Timed or Continuous | |
| • Maximum Output: | 5 Amps | |
| • Easy to read, sun bright LED display | | |
| • Compact package (approx. 7" x 3" x 3") | | |
| • Manufactured in the USA | | |



NSF/ANSI 50 LISTED

MODEL RC554X
P/N 554230
Digital ORP Controller

INCLUDES: Controller, flow cell with flow switch, ORP probe, 3/8" tubing and fittings.

- | | | |
|--|--|-------------------|
| | ORP | Feed Cycle |
| • Factory Setting: | 650 mV | .6 sec. |
| • Display Range: | 0-995 mV | |
| • Setpoint Range : | 400-900 mV | |
| • Feed Cycles: | .6 to 900 seconds with 5-minute analysis periods | |
| • Power: | 120V corded (input/output) | |
| • Feed: | Timed or Continuous | |
| • Maximum Output: | 5 Amps | |
| • Easy to read, sun bright LED display | | |
| • Compact package (approx. 7" x 3" x 3") | | |
| • Manufactured in the USA | | |



MONITOR ALLOWS REMOTE ACCESS TO CONTROLLER DATA THROUGH A SECURE WEBSITE.

554400
NEW! Controller Remote Monitor (System)

- Monitor is compatible with Rola-Chem digital pH/ORP and pH/Dual ORP Controllers (regardless of age or generation)
- Monitor will upload controller data at specific intervals - set by operator
- Secure website with operator set password and access
- Serial connection from monitor to data port of controller - provided. Ethernet connection from monitor to server - not provided
- LED lights verify connection to server (Green) and activity (Amber)
- Internal reset button - used to reconnect monitor to server. Power down will automatically reconnect monitor to server

ONE-YEAR LIMITED WARRANTY ON CONTROLLER ELECTRONICS AND PROBES

NOTE: It is recommended that an in-line filter system (part number 550591) be used before the flow cell.

READY-TO-MOUNT CONTROLLER SYSTEMS

(All components required for pool automation mounted on a polypropylene board.)

pH Liquid Acid/ORP Liquid Chlorine System

554107

INCLUDES: Programmable Digital pH/ORP Controller complete with Flow Cell, Flow Switch, Sample Valves, ORP and pH Probes, 40' of Black 3/8" Tubing, 100' Clear 7/16" Tubing and Fittings, two Peristaltic Pumps (38 GPD), In-line Flow Cell Strainer.

Also Available:

554118 includes one **38 GPD** & one **12 GPD** Peristaltic Pump

554119 includes two **1 GPD** Peristaltic Pumps

554120 includes two **12 GPD** Peristaltic Pumps

554121 includes one **1 GPD** & one **12 GPD** Peristaltic Pump

554410 includes one **77 GPD** & one **38 GPD** Peristaltic Pump



Digital pH/ Dual ORP System

554320

INCLUDES: Programmable Digital pH/Dual ORP Controller complete with Flow Cell, Flow Switch, Sample Valves, ORP and pH Probes, 40' of Black 3/8" Tubing, 100' Clear 7/16" Tubing and Fittings, two Peristaltic Pumps (38 GPD), In-line Flow Cell Strainer.

554430 includes two **12 GPD** Peristaltic Pumps

NOTE: Complete systems mounted to a polypropylene board. These systems are designed to control pools up to 100,000 gallons. Larger pools may require larger GPD peristaltic pumps.

READY-TO-MOUNT CONTROLLER SYSTEMS

(All components required for pool automation mounted on a polypropylene board.)



pH/ORP Erosion Feeder System

554222

INCLUDES: Programmable Digital pH/ORP Controller complete with Flow Cell, Flow Switch, Sample Valves, ORP and pH Probes, 40' of Black 3/8" Tubing, 100' Clear 7/16" Tubing and Fittings, one Peristaltic Pump (38 GPD), 120 volt Solenoid Kit (includes Solenoid, In-line filter and Check Valve), In-line Flow Cell Strainer.

Erosion Feeder NOT included.

554122 includes one 12 GPD Peristaltic Pump

pH/ORP Salt Generator System

554223

INCLUDES: Programmable Digital pH/ORP Controller complete with Flow Cell, Flow Switch, Sample Valves, ORP and pH Probes, 40' of Black 3/8" Tubing, 100' Clear 7/16" Tubing and Fittings, one Peristaltic Pump (38 GPD), In-line Flow Cell Strainer.

- Power output to Salt Generator (not included) is 110 Volt 5 Amp

554123 includes one 12 GPD Peristaltic Pump

pH Only Liquid Acid System

554217

INCLUDES: Programmable Digital pH Controller complete with Flow Cell, Flow Switch, Sample Valves, pH Probe, 40' of Black 3/8" Tubing, 100' Clear 7/16" Tubing and Fittings, one Peristaltic Pump (38 GPD), In-line Flow Cell Strainer.

554234 includes one 12 GPD Peristaltic Pump



ORP Only Liquid Chlorine System

554233

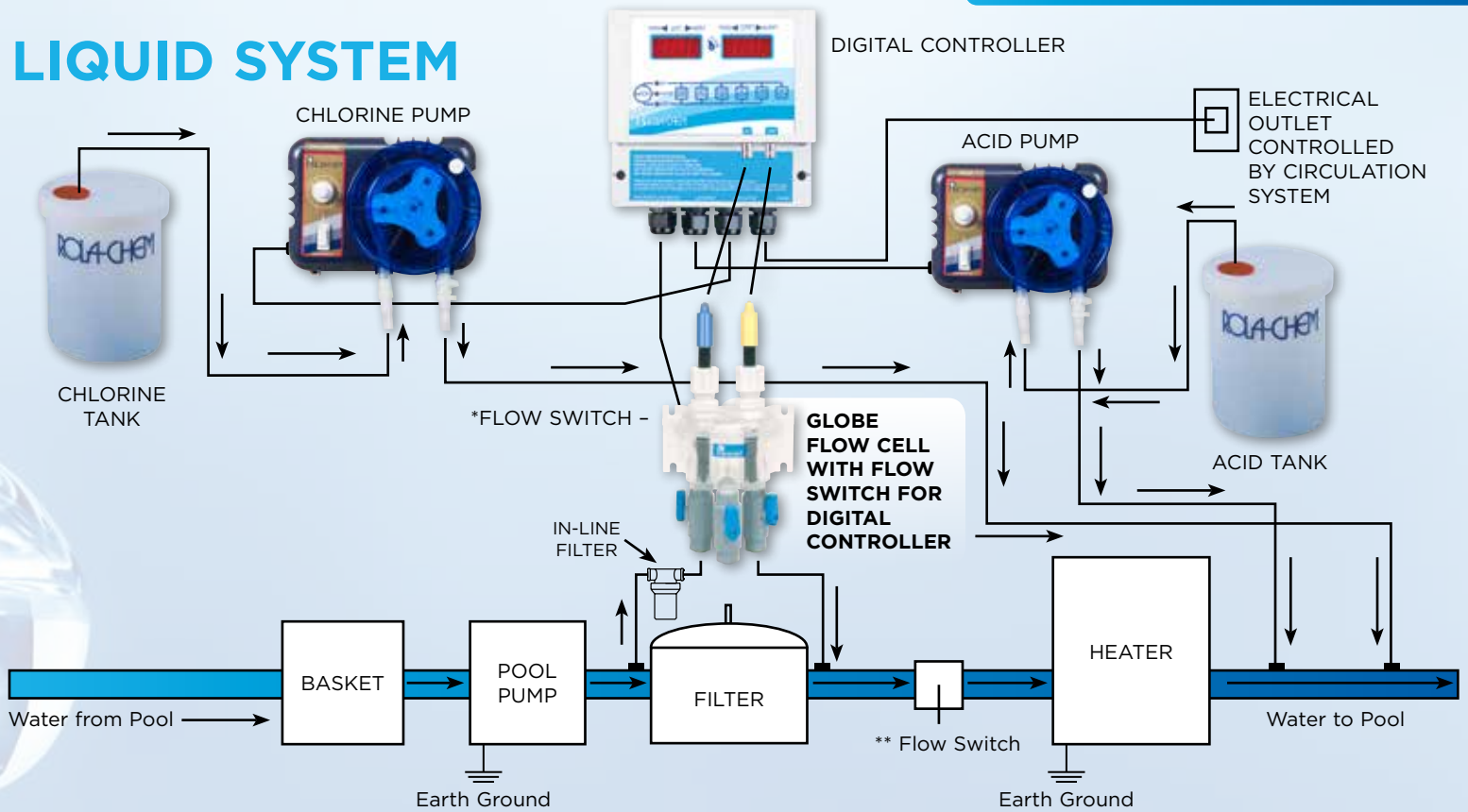
INCLUDES: Programmable Digital ORP Controller complete with Flow Cell, Flow Switch, Sample Valves, ORP Probe, 40' of Black 3/8" Tubing, 100' Clear 7/16" Tubing and Fittings, one Peristaltic Pump (38 GPD), In-line Flow Cell Strainer.

554235 includes one 12 GPD Peristaltic Pump

554229 includes one 120 Volt Solenoid Kit (for erosion system)



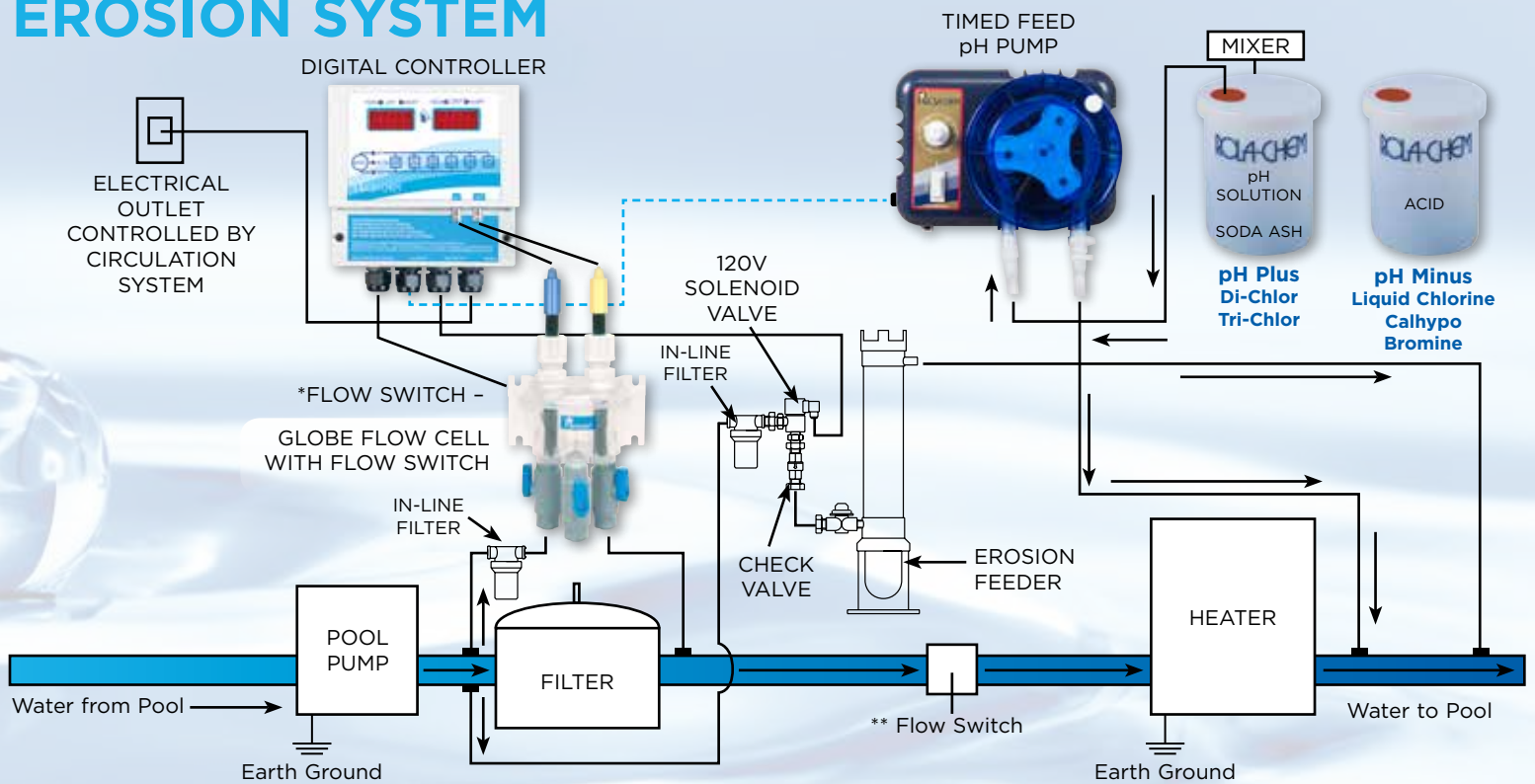
LIQUID SYSTEM



* Flow switch to ensure circulation to control probes and indication that pool circulation is occurring (Included in Digital Controller/Globe Flow Cell Only)

** Safety flow switch for protection of heater and to ensure dilution of chemical into pool

EROSION SYSTEM



* Flow switch to ensure circulation to control probes and indication that pool circulation is occurring (Included in Digital Controller/Globe Flow Cell Only)

** Safety flow switch for protection of heater and to ensure dilution of chemical into pool

PROFESSIONAL SYSTEM COMPONENTS

550180

Globe Flow Cell

Made from high-impact acrylic with Flow Switch

- For Digital Controller System



7125190

Quick Connect Valve

3/8" Tubing x 1/4" MNPT

- For Flow Cells



550193

Tubing Connectors

3/8" Tubing x 1/4" MNPT



550194

Black Tubing

3/8"



523400

Tri-Roller

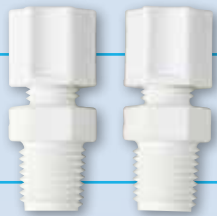
523114

Norprene Hose

Black

523115

Tygon Hose



550089

Probe Replacement Fitting

- For Flow Cells



550135

8' pH Heavy-Duty Probe



550136

8' ORP Heavy-Duty Probe



550208

3' pH Heavy-Duty Probe



550209

3' ORP Heavy-Duty Probe

- For Digital & Analog Controller System



523140 Norprene



523118 Tygon

Hose Assemblies

550201

ORP Gold Tip Probe

- Recommended for use with Chlorine (Salt) Generators



521160

3/8" Hose Barb x 3/8" Hose Barb



521170

3/8" Hose Barb x 1/4" MNPT

Check Valves



527158



527159



520113

Injectors

NO MORE CLOGGED FLOWMETERS!

ROLA-CHEM'S FLOWMETERS HAVE A WIDE CHAMBER THAT GREATLY REDUCES MINERAL DEPOSITS BY ALLOWING HIGHER FLOW VOLUME

Designed to be compatible with practically every existing flowmeter, replace your old clogged flowmeters with these accurate, easily serviced units from **Rola-Chem**.

Rola-Chem flowmeters are built to withstand water temperatures up to 200°F and are manufactured to work with schedule 40 PVC pipe.

ACCURATE READINGS

- Our heavy-duty gasket ensures airtight seals

VISUAL INDICATOR

- Calibrated on both sides in gallons and liters per minute

SERVICEABLE

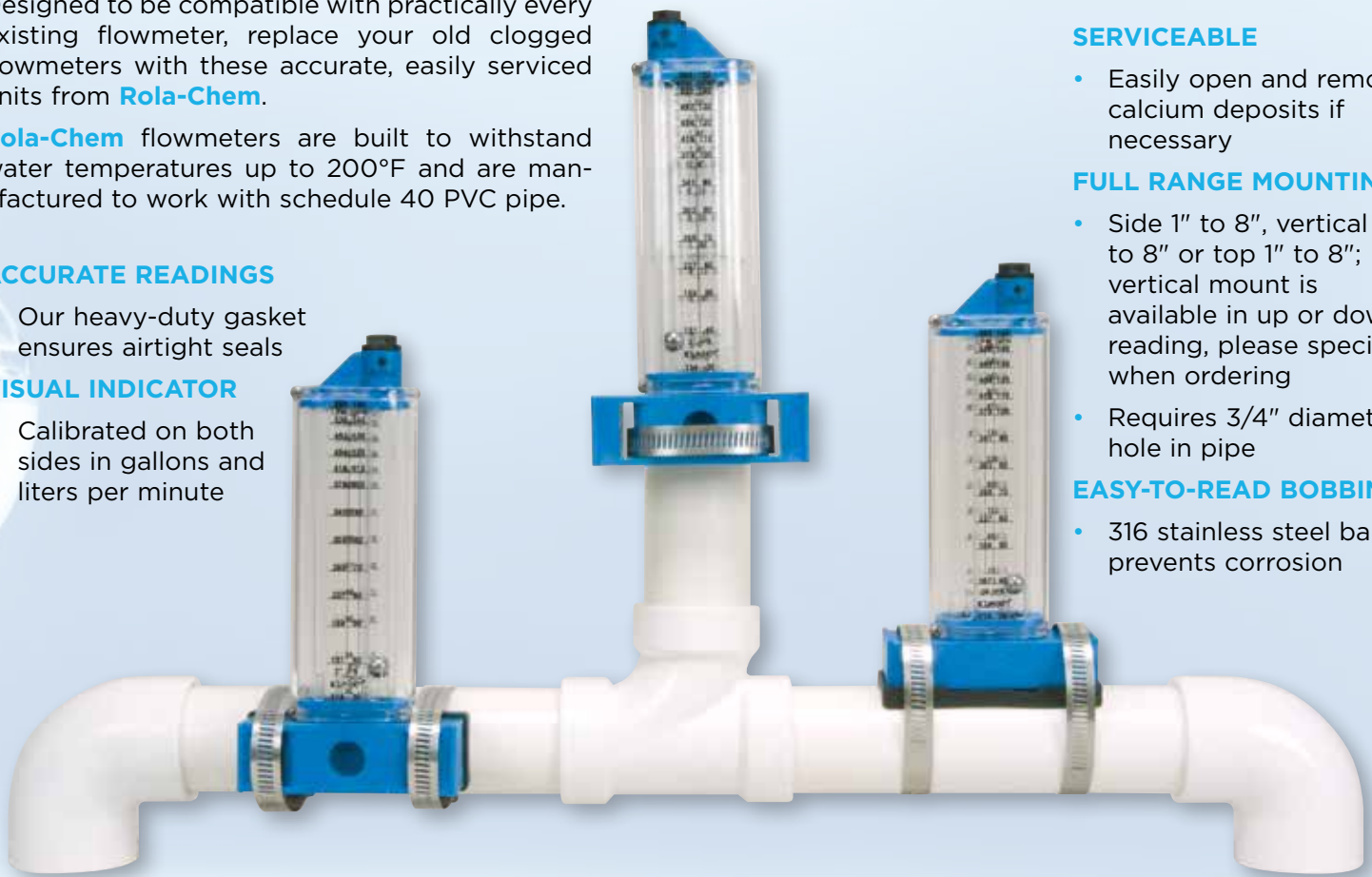
- Easily open and remove calcium deposits if necessary

FULL RANGE MOUNTING

- Side 1" to 8", vertical 1" to 8" or top 1" to 8"; vertical mount is available in up or down reading, please specify when ordering
- Requires 3/4" diameter hole in pipe

EASY-TO-READ BOBBIN

- 316 stainless steel ball prevents corrosion



FLOWMETER SPECIFICATIONS - MINIMUM DIMENSIONS

| MODEL NO. | PIPE MATERIAL | PIPE SIZE | A* MINIMUM | B** MINIMUM | RANGE GPM | RANGE LPM | CLAMP SIZE | MOUNT POSITION |
|-----------|---------------|-----------|------------|-------------|-----------|-----------|------------|----------------|
| 570321 | PVC-GALV | 1" | 5" | 10" | 10-30 | 38-114 | 40 | S, T, & V |
| 570331 | PVC-GALV | 1.25" | 6" | 11" | 15-50 | 57-189 | 44 | S, T, & V |
| 570340 | COPPER | 1.5" | 8" | 15" | 20-55 | 76-208 | 44 | S, T, & V |
| 570341 | PVC-GALV | 1.5" | 8" | 15" | 25-60 | 95-227 | 44 | S, T, & V |
| 570350 | COPPER | 2" | 10" | 20" | 40-140 | 151-530 | 56 | S, T, & V |
| 570351 | PVC-GALV | 2" | 10" | 20" | 40-140 | 151-530 | 56 | S, T, & V |
| 570360 | COPPER | 2.5" | 13" | 25" | 70-245 | 265-927 | 64 | S, T, & V |
| 570361 | PVC-GALV | 2.5" | 13" | 25" | 70-240 | 265-908 | 64 | S, T, & V |
| 570370 | COPPER | 3" | 15" | 30" | 100-280 | 379-1060 | 64 | S, T, & V |
| 570371 | PVC-GALV | 3" | 15" | 30" | 100-300 | 379-1136 | 64 | S, T, & V |
| 570380 | COPPER | 4" | 20" | 40" | 200-480 | 757-1816 | 44 (2) | S, T, & V |
| 570381 | PVC-GALV | 4" | 20" | 40" | 175-500 | 662-1893 | 44 (2) | S, T, & V |
| 570391 | PVC-GALV | 6" | 30" | 60" | 400-1050 | 1514-3975 | 64 (2) | S, T, & V |
| 570401 | PVC-GALV | 8" | 40" | 80" | 700-1900 | 2650-7192 | 72 (2) | S, T, & V |

*A = Minimum distance from downstream elbow or restriction. **B = Minimum distance from upstream elbow or restriction.

After Part Number, Indicate Mounting: (T) = Top • (S) = Side • (V) = Vertical

CHEMICAL TANKS

Rola-Chem offers a range of heavy-duty tanks and covers available in 5, 15, 30, and 55 gallon sizes. Precision-molded of high-density polyethylene polymer, which is highly resistant to corrosive solutions. For your convenience, tanks and lids are sold separately.

FEATURES:

- Heavy-Duty Construction - formed from high-density polyethylene
- Translucent - allows visual check of chemical level
- UV Protected - solar rays will not damage chemicals

SYSTEM TANK

FEATURES:

- Convenient mounting of your Rola-Chem Pump on tank
- Includes chemical re-fill and pick-up holes
- Heavy-Duty Construction - formed from high-density polyethylene
- Translucent - allows visual check of chemical level
- UV Protected - solar rays will not damage chemicals

- 543724** RC-103 SC Rola-Chem Pro Series Pump 38 GPD mounted on a 15-Gallon Poly Tank
- 543725** RC-25/53 SC Rola-Chem Pro Series Pump 12 GPD mounted on a 15-Gallon Poly Tank

CHEMICAL TANKS - SPECIFICATIONS

| TANKS & COVERS | | DIMENSIONS | | | |
|----------------|-----------------------|------------|--------|-------|-----|
| PART | PRODUCT DESCRIPTION | CAPACITY | HT. | DIA. | WT. |
| 561004 | Poly Tank | 5 GAL | 14" | 11" | 6# |
| 561105 | Poly Cover w/Cap Plug | 5 GAL | | | |
| 561015 | Poly Tank | 15 GAL | 21.5" | 15" | 15# |
| 561115 | Poly Cover w/Cap Plug | 15 GAL | | | |
| 561030 | Poly Tank | 30 GAL | 28.5" | 18" | 17# |
| 561130 | Poly Cover w/Cap Plug | 30 GAL | | | |
| 561055 | Poly Tank | 55 GAL | 34" | 22.5" | 22# |
| 561155 | Poly Cover w/Cap Plug | 55 GAL | | | |
| 561265 | System Tank* | 15 GAL | 36.75" | 15" | 12# |



*15 GAL. ONLY
(Pump not included.)