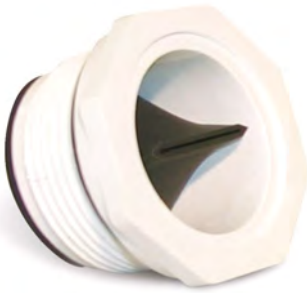


Instructions for the



1. **Install Winter Duck Plugs in all return lines.**

The double-seal system provides a water-tight seal at the face plate & inside the fitting.

2. **Use a Blower to blow out all returns. (MIN. 100cfm)**

The Winter Duck Plug provides adequate back pressure to allow up to 4 returns to be cleared at the same time with no need for "burping."

3. **Wait for all the returns to bubble for several minutes and shut the blower off.**

4. **"Snap" the yellow caps into place by pushing in on the center of the cap.**

The yellow caps are not intended to hold pressure but provide protection from ice etc. Therefore, they do not need to be installed until all the lines are cleared and the blower is turned off.



Push in center of cap to Snap in Place

Some people like to use the butt end of a screwdriver.

For light-freeze areas you're done!

For hard-freeze areas consider these extra safety steps.

SKIP STEP 4 (be sure yellow caps are NOT installed and proceed to step 5)

5. **Add optional antifreeze to lines and turn on the blower again until you see antifreeze blown into the pool.**

6. **Install yellow "safety caps" for additional protection.**