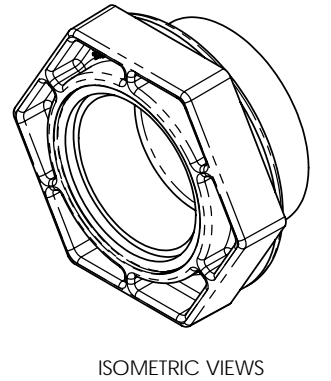
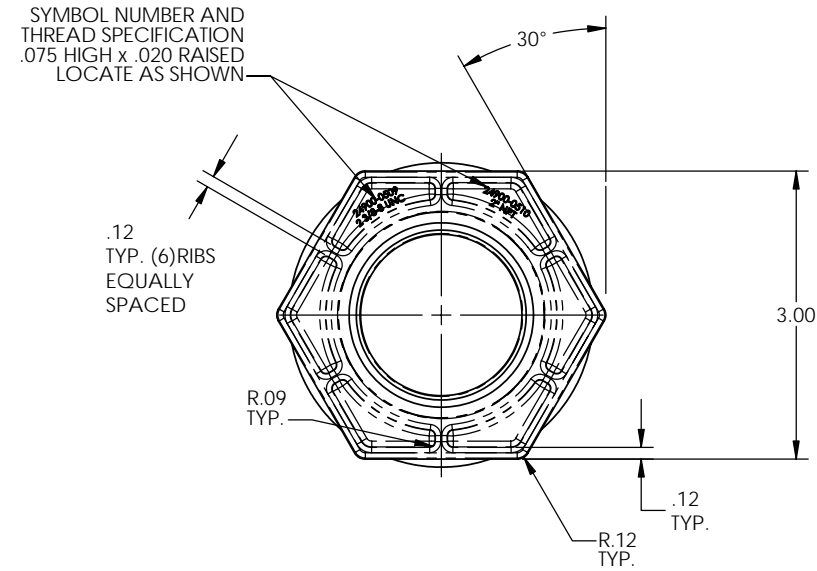
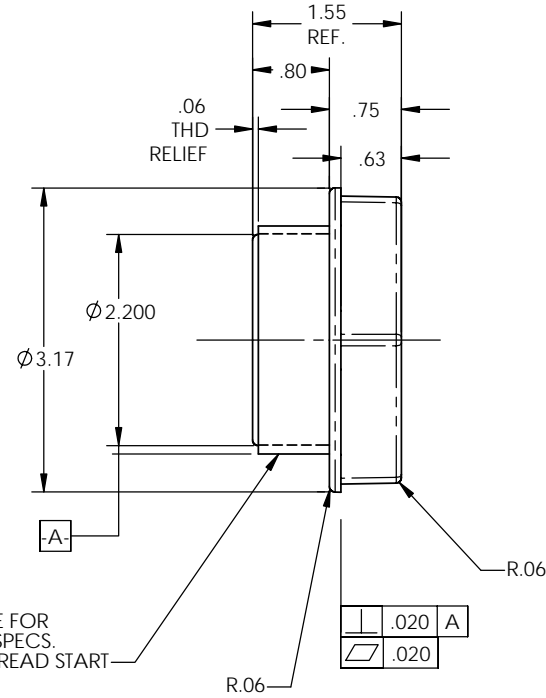
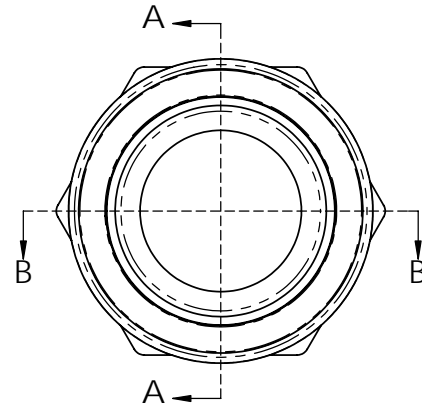
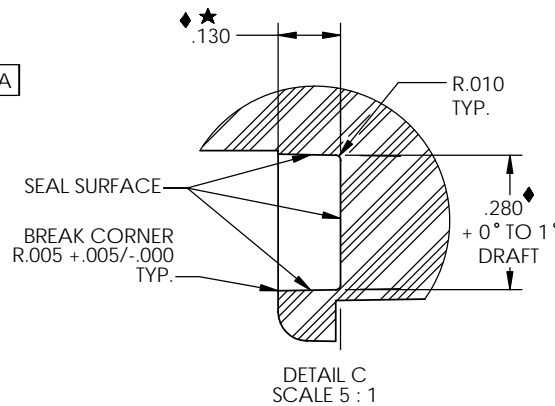
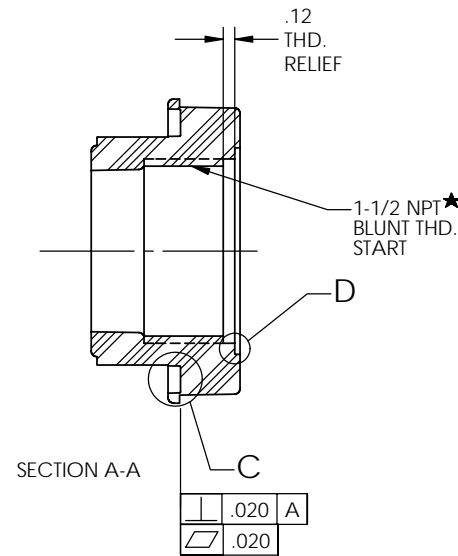
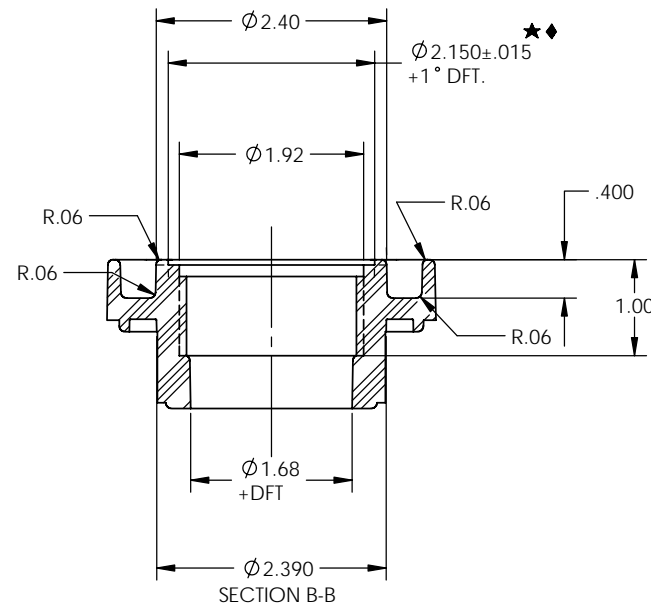
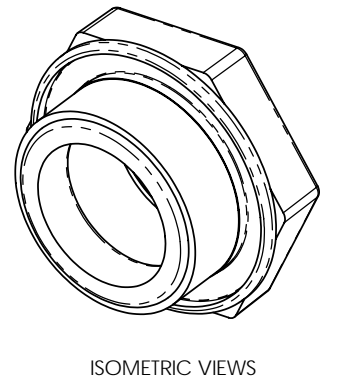
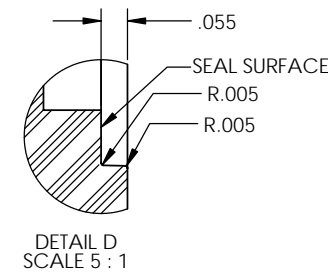


SYMBOL NUMBER	THREAD SPECIFICATION
24900-0509	2 3/8-8 UNC CL 2A 2.372 / 2.357 MAJOR DIA.
24900-0510	2" NPT



SEE TABLE FOR
THREAD SPECS.
BLUNT THREAD START



★ = CONTROL FEATURE
NOTE: THIS IDENTIFICATION OF ANY DIMENSION, SPECIFICATION, OR ATTRIBUTE AS A CONTROL FEATURE IN NO WAY RELIEVES THE MANUFACTURER FROM OBLIGATION OF MEETING SPECIFICATIONS AND STANDARDS RELATED TO NON-DESIGNATED FEATURES.

MATERIAL:
CHI-MEI, POLYLAC BRAND ABS
#PA-709 BLACK, (U87-60172)
STA-RITE MATERIAL SPEC: #M0000058, BLACK
APPROX. PART VOLUME: 4.42 CU. IN.
APPROX. PART WEIGHT: 0.164 LBS.

- NOTES:
- 1.) SURFACE FINISH SPI-SPE #3 FOLLOWED BY A LIQUID HONE.
 - 2.) SEAL SURFACE: THIS SURFACE TO BE FREE FROM ANY SURFACE IRREGULARITIES SUCH AS FLASH, POROSITY, EJECTOR PIN MARKS, ETC.
 - 3.) SLOTS MUST BE FREE OF FLASH.
 - 4.) ALL NPT THREADS TO WITHSTAND BOTTOMING OF A STANDARD SIZE PIPE NIPPLE PLUS 1-1/2 TO 2 WRAPS OF TEFLON TAPE WITHOUT SPLITTING OR CRACKING.
 - 5.) SURFACE IMPERFECTIONS THAT WOULD BE UNACCEPTABLE FROM AN APPEARANCE STANDPOINT ARE NOT PERMITTED.
 - 6.) PART MUST BE DATE CODED FOR THE PURPOSE OF RUN TRACEABILITY.
 - 7.) PERMITTED ROUGHNESS IN SEAL SURFACE AREA 200 MICRO-INCHES (ROUGHNESS AVERAGE) OR BETTER.

LISTING AGENCY CERTIFIED.
Substitution of specified materials or manufacturing location not allowed without prior agency approval.
ETL NSF X UL Other
Approved plant / vendor:
PLASPROS, INC.
WOODSTOCK, IL.

All drawings and specifications as well as processes, materials, compounds and other similar criteria are to be strictly adhered to. No modifications allowed without prior written approval.	DESIGNED IN INCHES [XXX] DIMENSIONS IN mm	CONFIDENTIAL contains trade secrets and other proprietary information of Pentair Water. Duplication, disclosure or use are forbidden without the written consent of Pentair Water.	SEE TABLE
	DO NOT SCALE DRAWING	DR. ALBRECHT	24900-0509
	TOLERANCE EXCEPT AS NOTED	CH. T.S.	FILE NAME
[X.] ±.030 ±[.76]			DRAIN FITTING MOLDED POOL FILTERS
[.X] ±.015 ±[.38]			
[XX] ±.005 ±[.13]			
[XXX] ±.005 ±[.13]			
✓ 125 [3.2]	ANGULAR ±1/2°		
	THIRD ANGLE PROJECTION		
REV. LETTER	CHANGE ORDER No.	DATE	SCALE 1:1 DATE 06/24/02 SHEET 1 OF 1
			24900-0509