

# Jacuzzi®

## JPV100

**PROFESSIONAL GRADE POOL AND SPA VACUUM**

Operating Instructions



## **SAFETY WARNINGS**

1. Read carefully and understand all safety warnings before operating. Failure to do so may result in serious personal injury.
2. Never allow children to operate this product. This is NOT a toy, children should be supervised to ensure they do not play with this product.
3. Keep the cleaner and its accessories out of reach of children.
4. Do not attempt to operate if the cleaner or charger appears to be damaged in any way.
5. This cleaner is not intended for use by persons with reduced physical, sensory or mental capabilities, or lack of experience and knowledge, unless they have been given supervision or instruction concerning the use of the appliance by a person responsible for their safety.
6. The warnings, cautions, and instruction discussed in this instruction manual cannot cover all possible conditions or situations that could occur. It must be understood, the operator should always exercise intensive caution and common sense when utilizing the cleaner.
7. Do not handle the cleaner with wet hands or without shoes.
8. Do not operate this cleaner in the presence of flammable or combustible liquids.
9. Never service the cleaner while the unit on.
10. Always dispose of batteries in accordance with local laws.
11. Leaks from a battery may occur under extreme conditions. If battery liquid gets on the skin, wash immediately with water. If it gets in your eyes, immediately flush your eyes with a mild solution of baking soda and water, and seek medical attention.
12. Keep hair, loose fitting clothing and all body parts away from openings and moving parts of this cleaner

## **USAGE INFORMATION**

13. Do not attempt to use if the cleaner appears to be damaged in any way.
14. Use this product only for its intended purpose as described in this manual. Use only Water Tech accessories and filters.
15. This product is not intended for commercial use.
16. Never leave your cleaner in water when it is "OFF" or when it has run out of power.
17. Do not use your cleaner for pool openings; the cleaner is designed for routine maintenance of your pool or spa.
18. The cleaner is designed for underwater use in swimming pools or spas only. It is not an all-purpose vacuum cleaner.
19. Submerge the cleaner in water immediately after turning the unit "ON" to prevent damage to the seal on the motor shaft. Failure to do so will shorten the life of the water seal and / or void the warranty.
20. Store cleaner in a clean dry place. Do not store in direct sunlight or expose to extreme temperatures.
21. Avoid picking up sharp objects as they may damage the filter.
22. Keep all openings on the cleaner free of debris which may reduce water flow.
23. Do not place the cleaner on or near hot surfaces.

## Two Year Limited Pro-Rated Warranty

Two year limited warranty from original date of purchase with one year full.  
After the first year, the claimant shall pay 1/2 of the MSRP or List Price of the warranted component.

Water Tech Corp ("WT") warrants this product, including supplied accessories against defects in material or workmanship to the original purchaser for the time periods as set forth above and below. Pursuant to this Limited Warranty WT will, at its option (i) repair the product to the original specifications or (ii) replace the product with a new or refurbished product. In the event of a defect, these are your exclusive remedies. For purposes of this Limited Warranty, "refurbished," means a product or part that has been return to its original specifications.

The Jacuzzi® JPVI100 Professional Grade Pool & Spa Vacuum, for a period of two (2) years from the original date of purchase of the product, WT will, at its option, repair or replace with new or refurbished product or parts, any product or parts determined to be defective. After the first year, the claimant shall pay 1/2 the MSRP or List Price of the warranted component.

**Accessories.** Included accessories or filters are covered by this Limited Warranty for a period of (90) days from the original date of purchase of the product.

**Instructions.** Please retain the original box and internal packaging materials. To obtain warranty service, you must comply with the following requisite instructions:

(1) Visit Water Tech Corp's Customer Support Department via the web at [www.wtrma.com](http://www.wtrma.com). You will be guided through the correct process on how to obtain the required RMA# (Return Merchandise Authorization Number.) All customers must obtain an RMA number before any product will be accepted for warranty service. If you need additional assistance, please contact us by telephone: (1-732-967-9888) or email: [customerservice@watertechcorp.com](mailto:customerservice@watertechcorp.com).

(2) Package the unit and the WT battery charger only (if the unit requires a WT charger ) properly and securely in the original box.

(3) Attach your RMA number and Bar-Code you received from the website to the outside of the package. If you could not print the RMA number and bar-code from the website you must write your RMA number in thick black indelible marker on two sides of the box.

(4) Send the package by USPS or express courier of choice to: Water Tech Corp, 10 Alvin Court, East Brunswick, New Jersey 08816; (WT suggests you insure the contents of your package.) WT is not responsible for lost, stolen or damaged property in transit to WT.

**Repair/Replacement Warranty.** This Limited Warranty shall apply to any repair, replacement part or replacement product for the remainder of the original Limited Warranty period or for ninety (90) days, whichever is longer. Any parts or products replaced shall become the property of WT.

This Limited Warranty covers only product issues caused by defects in material or workmanship during ordinary consumer use; it does not cover product issues caused by any other reasons, including but not limited to product issues caused by commercial use, acts of God, misuse, abuse, limitations in technology, or modification of or to any part of the WT product. This Limited Warranty does not cover WT products sold AS IS or WITH ALL FAULTS or consumables (such as batteries). This Limited Warranty is invalid if the factory-applied serial number has been altered or removed from the product. This Limited Warranty is valid only in the United States and Canada.

**EXPRESS LIMITATION: THIS LIMITED WARRANTY ONLY APPLIES IF THE PRODUCT WAS PURCHASED FROM AN AUTHORIZED WATER TECH DEALER. THIS WARRANTY IS NOT TRANSFERABLE.**

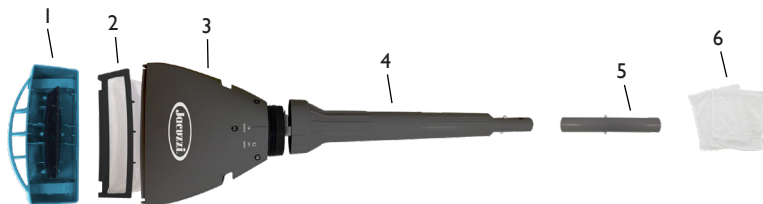
**LIMITATION ON DAMAGES.** WT WILL NOT BE LIABLE FOR ANY INCIDENTAL OR CONSEQUENTIAL DAMAGES FOR BREACH OF EXPRESS OR IMPLIED WARRANTY ON THIS PRODUCT.

**DURATION OF IMPLIED WARRANTIES.** EXCEPT TO THE EXTENT PROHIBITED BY APPLICABLE LAW, ANY IMPLIED WARRANTY OF MERCHANTABILITY OR FITNESS FOR A PARTICULAR PURPOSE ON THIS PRODUCT IS LIMITED IN DURATION OF THIS WARRANTY.

Some states do not allow the exclusion or limitation of incidental or consequential damages, or allow limitations on how long an implied warranty lasts, so the above limitations or exclusions may not apply to you. This Limited Warranty gives you specific legal rights and you may have other rights, which vary from state to state.

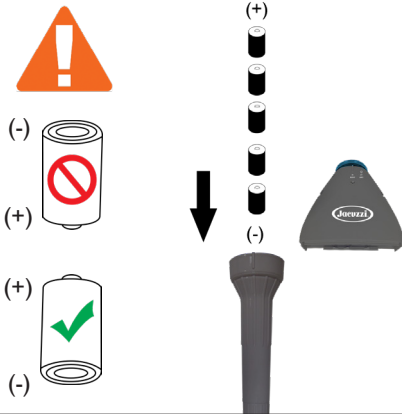
## PRODUCT BREAKDOWN

Model: I2I00BB

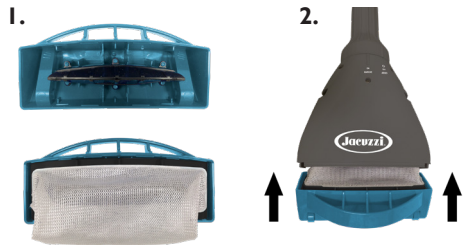


- P12X022AP  
P10XCF  
P12X022MF
1. Head Cover
  2. Filter Bag
  3. Power Head
  4. Battery Chamber
  5. Pole Adapter
  6. Micro Filter Bags

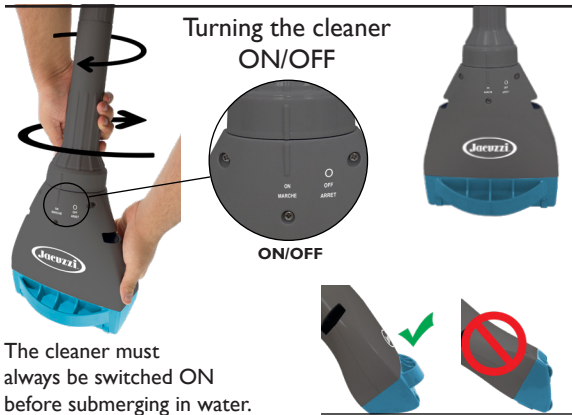
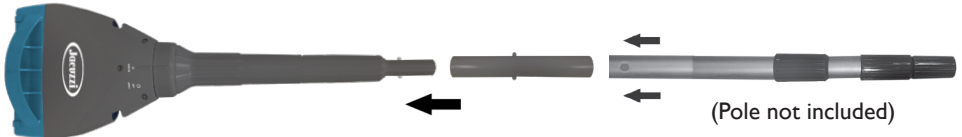
- Do not mix old and new batteries.
- Do not mix Alkaline, Carbon-Zinc, or Ni-Cad batteries.



1. Inserting Filter Bag
2. Attaching the Head Cover



Attaching the pool pole



## Maintenance

Detach the Power Head from the Battery Chamber and remove batteries between uses.

You should remove and clean the Filter Bag after each use.

Always store your cleaner in a cool, dry indoor shelter.

## End of Life Disposal / Recycling Directive

### Environmental Recycling Programs USA

Please respect recycling regulations and help to protect the environment. Return non-working electrical equipment to a facility appointed by your municipality that properly recycles electrical and electronic equipment. Do not dispose them in unsorted waste bins. For items containing removable batteries, remove batteries before disposing of the product.



Help protect the environment.

